

EXPLORER HIGHWAY

SUMMER 2018/2019



FREE – PLEASE TAKE A COPY

COROMANDEL | BAY OF PLENTY | WHAKATANE
ROTORUA | TAUPO | TURANGI

PEUGEOT SUMMER DRIVE

YOUR NEXT 5 SUMMERS COVERED



5 YEAR SERVICE + **5 YEAR** WARRANTY + **5 YEAR** ROADSIDE ASSIST

OFFER ENDS 31ST DECEMBER



PEUGEOT

*5-year Service Plan, Warranty and Roadside assist or 100,000kms (whichever comes first). The service plan and warranty are offered free of charge and provided by the Peugeot network of New Zealand. The vehicle servicing must be completed at an authorised Peugeot service centre and the warranty is conditional upon the recommended service schedule for your Peugeot being followed. Please refer to the vehicle's maintenance book or your local Peugeot Centre for exclusions or limitations regarding service plan, warranty or roadside assist provisions. The 5-year service plan, warranty and roadside assist offer is only available on New Peugeot vehicle purchases in November and December 2018 and is automatically transferable on the sale of your vehicle. The offer is not available on any demonstrator or used Peugeot sales. Only available at participating dealers until 31st December 2018.

TAURANGA PEUGEOT

619-627 CAMERON RD, TAURANGA | PH 07 579 5080 | 
email: sales@taurangapeugeot.co.nz | online: www.taurangapeugeot.co.nz



PEUGEOT

Introduction

Welcome to the 2018/2019 edition of Explorer Highway showcasing our stunning highways Pacific Coast Highway, Thermal Explorer Route, the Central Plateau Volcanic Loop and surrounding areas. Renowned for its natural beauty, stunning coastline, green pastures, misty rainforests and pristine golden beaches, there are endless options for your summer escape activities in this area.

See inside for what's on offer including dining, attractions, local events and more...

**Explorer Highway
is a journey to be discovered!**



THE KERERŪ - 2018 BIRD OF THE YEAR

NZME. NEW ZEALAND
MEDIA AND
ENTERTAINMENT

Bay of Plenty Times

December 2018

Contents

Highway Map/Save the kauri	4
Coromandel.....	5
Waihi & Paeroa	6-7
Katikati	9-11
Tauranga	12-13
Tauranga Events.....	15
Mount Maunganui Events.....	16
Mount Maunganui	17
Papamoa & Te Puke	19
Whakatane	20-21
Rotorua	22-25
Taupo & Turangi.....	26-27
Dining directory.....	27



- Reef fishing and hapuka fishing
- Mayor Island fishing and stopovers
- Staff team-building and Christmas functions
- Stag/Hen parties
- Harbour cruises
- Kayaking at Mayor Island

**HALF
PRICE
CHILDREN!**

Ph 0800 224 278 (0800 2 CHARTER)
www.blueocean.co.nz | info@blueocean.co.nz

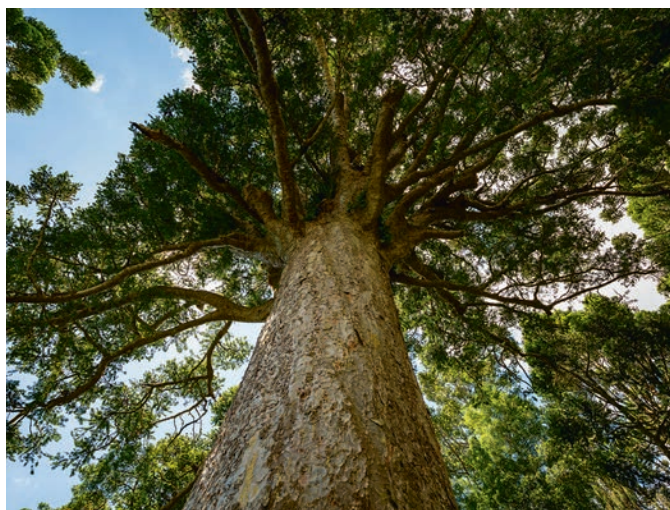


Check us out
on facebook!





HELP SAVE KAURI WHEN VISITING THE UPPER NORTH ISLAND



Kauri trees grow throughout the upper North Island; if you're in natural forest and you're in the upper North Island, it's likely you'll be near

kauri trees. People are the main way that kauri dieback disease is spread, through the movement of contaminated soil on footwear. But by taking the

time to clean your footwear and other gear, responsible visitors like you are helping save kauri from extinction.

Remember:

1. Clean all soil off your footwear and other gear (including hiking poles, clothing and bags), every time you enter or leave a forest area. This is to avoid introducing kauri dieback disease to a new area, or moving it from an area where the disease is. A pinhead of soil is enough to spread the disease.
2. Don't go off-track for any reason (including to hug

a kauri!). A kauri's roots are extremely delicate, grow close to the surface, are susceptible to disease, and can grow outwards 3x as far as a tree's branches.

The Dept of Conservation has recently closed many walking tracks throughout the Upper North Island to prevent the spread of kauri dieback disease. Check the website www.doc.govt.nz or contact the local office for up to date track information before starting your trip.

The Coromandel

COROMANDEL PENINSULA

The Pacific Coast Highway Coromandel route is breathtaking and so good for the soul. With a mountainous interior cloaked in native rain forest and more than 3400 kilometres of dazzling white sand beaches, it is a relaxed haven that is unspoiled.

Activities and attractions are plentiful, from fishing and diving to hiking and cycling.

Located on the east coast of New Zealand's North Island and within an hour and a half drive of the major centres Auckland, Hamilton and Rotorua.

WHANGAMATĀ

Voted best beach in New Zealand 2018



The ocean beach provides some of the best surfing breaks and safest swimming in the country. The Coromandel Forest Park bordering the town provides many outdoor experiences, including short walks, mountain bike trails and old gold mining sites.

CATHEDRAL COVE

The track down to the cove begins at the northern end of Hahei and takes about 2 hours. Otherwise explore the breath-taking coastline of the reserve by kayak, water taxi or scenic boat cruises.



HOT WATER BEACH



Within two hours either side of low tide, bring a spade and dig your own thermal pool where you can relax watching the ocean.

DRIVING CREEK RAILWAY & POTTERY

Go back in time with this amazing railway that climbs the mountain through kauri forests to

the 'Eyeful Tower'. Wander through sculpture gardens and bush walk. Visit the craft shop. www.dcrail.nz

THE COROGLLEN TAVERN

Call in for a brew, good meal and cheeky kiwi banter at this icon kiwi pub. www.coroglentavern.co.nz

THE 309 ROAD ADVENTURE

The road is 22km long and connects the East and West of the peninsula. The gravel road will take you on a journey through dense bushland with spectacular views as you follow alongside the river. Starting from Whitianga, must do's along the way:

309 Honey is known throughout the region for the variety of honeys that it produces:

Egan Park is a large grass and treed area beside the Mahakirau Stream — a good place for a picnic and a swim.

Waiau Kauri Grove is a spectacular group of Kauri trees that feature 13

massive specimens and twin Kauri all viewed up close and personal.

Waiau Waterfall is a five minute walk where you will find at the base a pristine waterhole surrounded by boulders.

Castle Rock is the core of an old volcano that rises above the bush on the backbone of the Peninsula.

The Waterworks a family fun quirky theme park about 10 minutes from Coromandel. With 70+ attractions made mainly from recycled materials and powered by water. www.thewaterworks.co.nz

www.golddiscoverycentre.co.nz

**WINNER
BEST
VISITOR
EXPERIENCE**

Discover GOLD in Waihi



**GET THE INSIDE STORY
GET INSIDE THE FENCE**
Be guided through Waihi's fascinating gold story that started in 1878 and still continues today.

**TOURS OPERATE DAILY
Bookings Essential**

07 863 9015

**discovery
bike
hire
& tours**

**waihi
gold
story
tours**
THE 140 YEAR QUEST

**GOLD
DISCOVERY
CENTRE**

i SITE

Gold Discovery Centre & i-SITE | 126 Seddon St, Waihi

HAURAKI RAIL TRAIL



A highlight of the Hauraki Rail Trail includes bike riding through the stunning Karangahake Gorge. The trail follows the path of two historic railway lines, and is broken up into 5 sections that can be done in a day. Starting at Pūkoro Miramira and ending at Matamata.

A number of short walks including the Windows Walk and Rail Tunnel Loop, as well as the longer walks of Karangahake Mountain and the Karangahake Historic Walkway, can all be experienced in the gorge. For more information visit www.thecoromandel.com/paeroa

Explore the Lights,
Sights & Sounds

Paeroa Christmas Lights

**HISTORICAL MARITIME PARK & MUSEUM
THURSDAY 13 - MONDAY 24 DECEMBER
8.30PM - 11PM EVERY NIGHT
(Gates close for last entry at 10pm)**



paeroachristmas.com
Tickets available at **iTicket.co.nz**

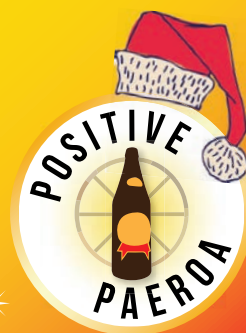
iTICKET

**Our summer
season of events in
the best little town
in the middle of
everywhere**

There's always something happening. Pop online or call for more information. We'd love to see you!

paeroa.org.nz/events

07 862 6999 or 027 605 1858



Paeroa & Waihi

CORNISH PUMPHOUSE, WAIHI

Whether you're after beautiful bush and river walks and cycle trails or, if you enjoy nothing better than whiling the day away in antique shops and galleries, Paeroa's the

destination for you. Spend some time in the stunning Karangahake Gorge, one of the 14 Wonders of New Zealand or cycle the Rail Trail, rich in pioneering history. Enjoy a paddle

boat ride at the Maritime Museum or spend the day discovering treasures in our antique shops and art galleries. Learn all about the history of L&P, and, have your photo taken with

our 'big bottle'! Paeroa has a reputation for awesome annual events. Check out all the details at www.paeroa.org.nz or give Jo at Positive Paeroa on 07 862 6999.



Waihi is known as the country's 'Heart of Gold', where the gold-mining heritage is embraced and on display side-by-side with current mining using

modern-day extraction methods. Check out Martha Mine via the Pit Rim Walkway to view the local open-pit mine that is still fully operational.

WALKING TRACKS, OLD TUNNELS AND MINING HISTORY

The Karangahake Gorge historic walkway follows the old Paeroa to Waihi railway line with the remainder of the track following the banks of the Ohinemuri River. Old mine buildings and machinery can be seen from a number of locations on the walkway.



RELAX AT WAIHI BEACH



With an 8km stretch of beautiful white sand, relax at the beach, fish off the rocks or try boogie boarding or kayaking. Enjoy nature coastal walks to Orokawa

Bay and further out to Homunga Bay.

Venture into town and enjoy the unique boutique shops and the various cafes & restaurants.

EXPLORE, TOUR AND DISCOVER



A visit to the Gold Discovery Centre is a must. Waihi Gold Experience offers hands on interactive activities telling the story that spans 3 centuries, Then take the

Waihi Gold Mine Tour and visit inside the fence to experience modern-day gold mining up close. www.golddiscoverycentre.co.nz

KAURI PROTECTION ZONE

The Kaimai Mamaku Conservation Park is home to a magnificent taonga, the kauri tree. These giants stand proud in one of New Zealand's most unique ecosystems. Our kauri forest is threatened by a microscopic killer:

KAURI DIEBACK DISEASE.

**You can help save our
Kaimai kauri for future
generations to enjoy.**

CLEAN YOUR GEAR

1



Brush
Paraihe

2



Inspect
Tirotiro

3



Disinfect
Ka mate

4



Stay on track
Noho i te ara



Department of Conservation
Te Papa Atawhai

KEEP KAURI STAND NG
STOP KAURI DIEBACK DISEASE SPREADING **KIA TOITU HE KAURI**

WWW.KAURIDIEBACK.CO.NZ

BARRY - KATIKATI

Katikati

Just 40 minutes drive north of Tauranga lives the country's largest outdoor art gallery with over 70 pieces of work in the collection which consolidates the town's reputation as NZ Mural

Town. Katikati is also known as the Avocado capital of NZ with many roadside stalls selling the superfood and other avocado products available in the retail stores.

THE ARTS JUNCTION

Welcome to Katikati's newest arts facility and Visitor Information Centre.

This facility gives all the arts in Katikati a home to base themselves from and visitors a taste of our creative nature and local products. We encourage people to use the facility for meetings, workshops, exhibitions, live performances, film nights, fundraisers, or simply just anything you want. Katikati

is consolidating its boutique arts village reputation with the following must sees: Western Bay Museum, Open Air Art Gallery, Harry Maddox Gallery, Waterford Gallery, Katikati Art Group Gallery, and the artisan crafters – Arty Tarts. Not forgetting our wonderful op shops and vintage outlets.

We are now the destination that everyone has been looking for.

A BIG STORY TO TELL

The Western Bay Museum is a small, 21st century Museum situated in Katikati that tells a big story. They take immense pride in the historical cultural and artistic stories of the area and present these narratives in fresh and interesting ways, utilising a permanent collection

of objects and artefacts including a permanent Taonga Māori display. Exhibitions change regularly throughout the year.

There is a 1900s school room programme and group experiences and the only planned Northern Irish Settlement in the world!

MAGICAL FAMILY NIGHT OUT



Every year the Katikati Twilight Concerts have an exceptional line up of top class performer showcasing outstanding music talent. Set in a picturesque

riverside setting, make sure you pack the beach chairs, rugs and picnic hamper and enjoy a magical evening with the whole family. www.katikaticoncerts.co.nz



SAPPHIRE SPRINGS
Holiday Park & Thermal Pools



Present this ad to receive
ONE FREE CHILD ENTRY
Applies to Pool/Park entry fees only

COME FOR THE DAY AND PLAY OR STAY FOR A RELAXING HOLIDAY, ONLY 30 MINUTES NORTH OF TAURANGA



274 Hot Springs Road, Katikati
07 549 0768
www.sapphiresprings.nz

Katikati's newest arts precinct

Also accommodating the Visitor Information Centre

Art exhibitions changing regularly.

Open 9am – 4pm Monday - Friday.
10am – 2pm Weekends & Public Holidays.

36 Main Road, Katikati.
07 549 5250

CARLTON GALLERY | **THE ARTS JUNCTION**



Visit us at
The Old Fire Station
32 Main Road, Katikati 3129

WESTERN BAY MUSEUM

Western Bay Museum
The *small* museum that tells a *big* story

www.westernbaymuseum.nz
info@westernbaymuseum.nz

07 549 0651

Open 7 days a week
10am - 4pm



BeeNZ
HONEY of NEW ZEALAND



Premium New Zealand Honey

85 Tetley Road, Katikati 3178
www.beenz.co.nz
07 549 4178

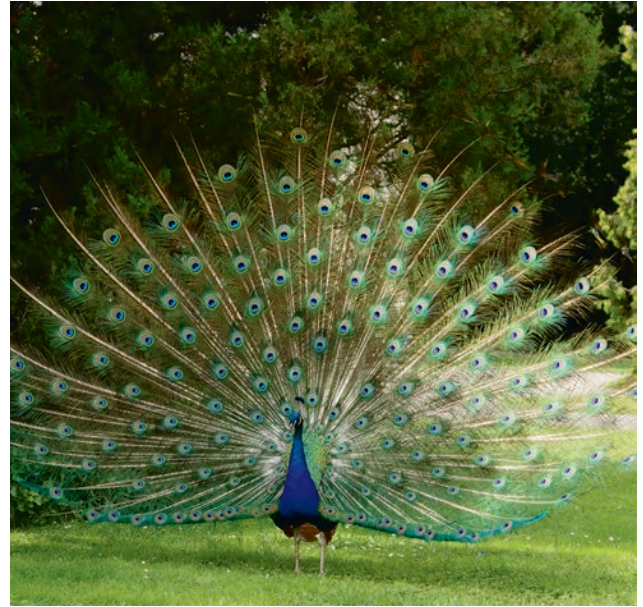
HAIKU PATHWAY



Wander by the Uretara Stream just behind the town's main street and take time out to read the poems

engraved on the stones. The Haiku Pathway is the largest collection of haiku 'stones' outside Japan.

BIRDS & GARDENS



The Katikati Bird Gardens is a great family day out and beautiful place to unwind. Featuring a wide range of native, and exotic birds, as well as water-lily ponds, mature trees from around the

world, flower gardens and natural wetlands, the gardens are a delight all year round. Plus there is a cafe and gift shop on site. Visit www.birdgardens.co.nz to find out more.

GET BACK TO NATURE

Sapphire Springs Holiday Park & Thermal Pools is set in 32 hectares of beautiful native forest at the foot of the Kaimai Ranges. Relax in one of 3 warm outdoor thermal

pools and 2 hot private spas set in a picturesque natural bush setting. Take a wander through the beautiful native bush with walks ranging from 20 minutes to an hour.

The Talisman Hotel Garden Bar and Bistro has been providing hospitality, entertainment and a great atmosphere to visitors and locals for over 130 years. Bistro dining or relax in the garden bar under the avocado tree.



KATIKATI TWILIGHT CONCERTS 2019

SATURDAY 5 JAN
HIPSTAMATICS
(Wet weather date 6 Jan)



SATURDAY 26 JAN
SUPERSTAR SHOW
(Wet weather date 27 Jan)

SATURDAY 9 FEB
MIHOS JAZZ ORCHESTRA AND ALSO BRILLEAUX
(Wet weather date 10 Feb)



Adults: \$25 Season Ticket: \$60
Children: 15 and under free with an adult

Season tickets available at Katikati Information Centre or online at katikaticoncerts@gmail.com or by phoning Dianne on 07 549 3522. Single entry available at gate (cash only). All concerts to be held at Haiku Reserve, Main Road, Katikati. **Gates open at 5pm - Music at 6pm.** If wet check information line 07 549 3549

Season tickets available from the Information Centre located in The Arts Junction.

Seeka

LEVERET ESTATE



For more info visit: katikaticoncerts.co.nz

Tauranga

TAURANGA HARBOUR

Whether you want to dine, shop or explore Tauranga is the place to be. It is the largest city in the Bay of Plenty and located at the entrance to the Tauranga

Harbour and nestled beside magnificent Mauao (Mount Maunganui). With a relaxed lifestyle, there is always plenty to see and do all year round. Visit

the art gallery, enjoy some downtown shopping, or purchase local produce at the weekend markets. Wander along the water front on the Strand where

the kids can play at the playground and then enjoy a meal or coffee at various restaurants and cafes overlooking the harbour.

CATCH OF THE DAY



BOUNCING FUN

Dialled Indoor Entertainment Centre offers an amazing trampoline park, separate inflatable park, virtual reality centre, rage room and birthday party rooms. From 14 December to 31 January 2019 check out the Dialled Waterpark located at The Strand – the hottest place in town to play! www.dialled.co.nz

HOLLYWOOD NAILS

*Where beautiful nails...
meet smooth, hair free skin!*

Locally owned and operated

● Shop 311, Bayfair Mall | Phone: 07 572 2586
7 Gravatt Road, Papamoa | P: 07 572 1162
E: hollywoodnails14@gmail.com
www.hollywoodnails.co.nz | Mon – Sun 9.00am-6.00pm

A TASTE OF YESTERYEAR



The Historic village on 17th Avenue is a collection of original and replica buildings from early Tauranga set in gorgeous gardens and natural bush surrounds. Stroll the cobbled streets, see the grand buildings and shop for a great selection of local art and gifts.

LOCAL PRODUCE

The Farmer's Market every Saturday morning is at the Tauranga Primary School. The best seasonal produce pantry idea and tasty treats can be found at the market. With live music and hot coffee on hand the market is a perfect Saturday morning outing. Don't forget your reusable bags!

MAGICAL EXPERIENCE

For a magical experience combine glow worms and kayaking. On Lake McLaren at dusk take a guided tour that will paddle you to the enchanting glow worm canyon. A truly unique experience. www.glowwormkayaking.com

WATERFRONT MAGIC



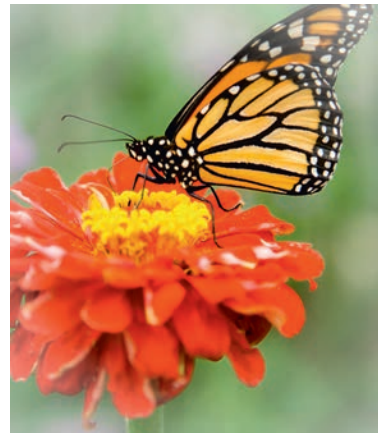
The Strand water front is great for the kids – with a playground, water fountain. Have your photo taken with Hairy Maclary and friends bronze sculptures.

WAIKAREAO ESTUARY

A 10km easy loop track around the estuary is shared with walkers, bikers and dogs. With a mixture of boardwalks over mudflats and gravel walk ways, wander through bush and watch the bird life when the tide is out.

PORI PORI WATERHOLE

Pori Pori Water Hole is located off State Highway 29 on Poripori Road. The water hole is along the Wairoa River and parking is available at the start of Poripori Road. Surrounded by rocks and forest Pori Pori waterhole is a magical place to visit for swimming and bring a picnic for a fun day out.



HIDDEN GEM

Bring your walking shoes and visit the Te Puna Quarry Park. It's an easy wander through spectacular gardens, packed with sculptures and a mix of native and exotic plants, including a butterfly house and garden. Admire the magnificent views over the Bay of Plenty and bring a picnic. www.quarrypark.org.nz



PORT OF TAURANGA TOURS

JOIN OUR 1 HOUR GUIDED BUS TOUR
OF NEW ZEALAND'S LARGEST PORT

14 - 24 January 2019

9.30am & 11.30am

Tickets \$5*

**Departing
Salisbury Ave
Mount Maunganui**

To book call 572- 8899



*\$1 from every ticket is donated to the Port of Tauranga Rescue Winch, in support of the Trustpower TECT Rescue Helicopter



Baypark *FamilySpeedway*

THRILLING FAMILY FUN!



28th December - South Pacific Midget
40 lapper

5th January - South Pacific Super
Saloon Champs

26th January - Burger King Super
Saloon Series

9th February - Super Stock Car Rumble

14th February - NZ Stock Car Champs –
practice – 'Free Public Entry

15th February - NZ Stock Car Champs

16th February - NZ Stock Car Champs

2nd March - Demolition Derby

9th March - NI Midget Champs

30th March - Bay Champs

6th April - Super Stock Rumble

27th April - Harry Fredrickson Stock Car
Gold Cup

4th May - Closing Night Fireworks

- **MIDGETS • SPRINT CARS • MINI STOCKS**
- **SALOONS • STOCKCARS • SUPER SALOONS**

Come early and enjoy a buffet meal with the family, walk through the pits, meet the drivers and see the race cars up close before racing starts!!

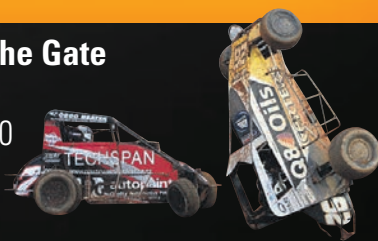
Secure KIDZONE with bouncy castle, face painting plus more

Tickets available at: Flamecrusher, Eventfinda, ASB Arena or at the Gate

- Family entry (2 adults & 3 children from 5 to 15 years) - \$60.00
- Adult entry - \$25.00 • Senior entry (65 years and over - Gold card) - \$10.00
- Child entry (5 years to 15 years) - \$10.00 • Under 5 - Free

Prices can vary for some meetings. Please check the website.

www.bayparkspeedway.co.nz



Tauranga Events

Visit www.eventfinda.co.nz for more info

FARMERS MARKET

Tauranga Primary School, 31 Fifth Avenue, Tauranga

Every Saturday morning
7:45am – 12:00pm

Locally grown seasonal fruits and vegetables, fresh meat, smoked and fresh fish, artisan hand crafted food, flowers and plants gather in the historic school grounds.

DINNER IN THE DOMAIN

Papamoa Beach Domain, Tauranga

Every Thursday from 13 December to 28 March from 5:30pm – 8:30pm

A weekly food market with a difference. Providing a selection of the best food trucks as well as a licensed area so you can enjoy a glass of locally brewed beer.

FAT FREDDY'S DROP

Wharepai Domain, Cnr Cameron and Hamilton Sts, Tauranga

Saturday 5 January 2019 @ 4:00pm

Freddy's annual summer roady around NZ with some incredible tour bus buddies will serve up one massive summer tour.

THE MERCHANT OF VENICE

The Historic Village, Seventeenth Ave West, Tauranga

Starting Thursday 17 January 2019
7:30pm – 10:15pm – see
www.eventfinda.co.nz for more
show times

Is the story of a Jewish moneylender who demands that an antisemitic Christian offer "a pound of flesh" as collateral against a loan. First performed in 1598, Shakespeare's study of religious difference remains controversial.

INTERISLANDER SUMMER FESTIVAL - TAURANGA RACES

Tauranga Racecourse,
1383 Cameron Rd, Greerton,
Tauranga

Wednesday 2 January 2019 10:30am

Enjoy a fun family day out with kids activities, live music and on-track

entertainment at one of the biggest race days of the year.

BLACKCAPS V SRI LANKA - 1ST ODI

Bay Oval, Blake Park, Kawaka Street, Tauranga

Thursday 3 January 2019
2:00pm – 10:00pm

International cricket is a NZ summer experience.

BLACKCAPS V SRI LANKA - 2ND ODI

Bay Oval, Blake Park, Kawaka Street, Tauranga

Saturday 5 January 2019
2:00pm – 10:00pm

International cricket.

TAURANGA RECORD FAIR

The Jam Factory, 17th Avenue, Historic Village, Tauranga

Saturday 5 January 2019
11:00am – 4:00pm

Records, Records and more Records...the first Record Fair in NZ of 2019.

TIME-TRAVELLING MAKERS' FAIRE - AKA NZ MEDIEVAL FAIRE 2019

Southey Field, 664 Devonport Road, Tauranga

Saturday 19 January 2019 9:00am
and Sunday 20 January 2019 9:00am

Step back in time with entertainment from Medieval times, more modern times and even alternative reality times. Watch working craftspeople and Living History re-enactors offering a variety of activities to watch and have-a-go.

ONE LOVE 2019

Tauranga Domain, Cameron Rd, Tauranga

Saturday 26 January 2019 11:00am
and Sunday 27 January 2019 11:00am

Now in its fifth year, One Love has well and truly established itself in the hearts of Reggae Fans from all corners of the globe as one of the most vibrant and popular summer music festivals.

BLACKCAPS V INDIA - 2ND ODI

Bay Oval, Blake Park, Kawaka Street, Tauranga

Saturday 26 January 2019
3:00pm – 11:00pm

International cricket at its best.

BLACKCAPS V INDIA - 3RD ODI

Bay Oval, Blake Park, Kawaka Street, Tauranga

Monday 28 January 2019
3:00pm – 11:00pm

International cricket

WHITE FERNS V INDIA - 2ND ODI

Bay Oval, Tauranga

Tue 29 Jan 2019 2:00pm / Cricket

International cricket

MELTED ICE CREAM & FROZEN DESSERT FESTIVAL

Tauranga Waterfront, The Strand, Tauranga

Saturday 9 February 2019
10:00am – 2:00pm / 2:00pm–6:00pm /
6:00pm–10:00pm

The Scoop NZ's first ever ice cream and frozen dessert festival. Featuring cooking demonstrations, live music, food trucks, entertainment, competitions, and a whole heap of ice cream.

NATIONAL SKATE DAY

Memorial Park, Devonport Road, Tauranga

Saturday 2 March 2019
11:00am – 2:00pm

Fun that the whole family join in and give it a go - skates available for use free of charge or bring your own.

THE EXTRAVAGANZA FAIR

Memorial Park, Devonport Road, Tauranga

Saturday 2 March 2019 9:00am and
Sunday 3 March 2019 9:00am

A fun family affair with market stalls, arts and craft, food, musical entertainment, circus shows, performers, tiny homes - including open home and kids shows & games.

Mount and Papamoa events

Visit www.eventfinda.co.nz for more info

THE LITTLE BIG MARKETS PAPAMOA

The Papamoa Pony Club, 491
Papamoa Beach Rd, Mt Maunganui

Held on the third Saturday of every
month from 9am – 2pm

Enjoy live music, experience street
food, shop for all things crafty,
designer and hand-made.

SOUTH PACIFIC MIDGET CAR SERIES

Baypark Speedway, 81 Truman Lane,
Mt Maunganui

Friday 28 December 2018

6:30pm – 10:00pm

NZ's best Midget Car drivers take on the
top drivers from the USA and Australia.

TOTARA LATINA

Totara St, 11 Totara St, Mt Maunganui

Saturday 29 December 2018

9:00pm – 1:00am

A fiery night of music and dance.

Don't miss the biggest Latin Party of
the summer.

SOUTH PACIFIC SUPER SALOON CHAMPS

Baypark Speedway, 81 Truman Lane,
Mt Maunganui

Saturday 5 January 2019

6:30pm – 10:00pm

The best Super Saloon drivers race
for the coveted annual title of South
Pacific Champion.

D1NZ ROUND 1 - THE SUMMER SMOKE OUT

ASB Arena at Baypark,
81 Truman Lane, Mt Maunganui

Saturday 12 January 2019 10:00am

and Sunday 13 January 2019 10:00am

Check out NZ's best drifters battling
it out in the stadium, sliding along
the concrete walls and turning tyres
into smoke!

WE RUN THE NIGHT - RUNNING FESTIVAL

Mt Drury Sound Shell, Marine
Parade, Mt Maunganui

Saturday 19 January 2019

7:00pm – 11:00pm

Run The Night with distances including
a 21km half marathon, 14km, 7km.

MOUNT MAUNGANUI LIONS & LIONESS 19TH ANNUAL BOOK FAIR

Mount Maunganui Sports Centre,
Cnr Maunganui and Hull Road,
Mt Maunganui

Friday 25 January 2019 – Sunday 27

January 2019

Get a bargain, books, puzzles,
DVD's, CD's and Vinyl Records.

PINIC IN THE PARK

Coronation Park, Maunganui Road,
Mt Maunganui

Saturday 9 February 2019

4:30pm – 8:30pm

Amazing design and craft vendors
and some of the best street food the
Bay has to offer.

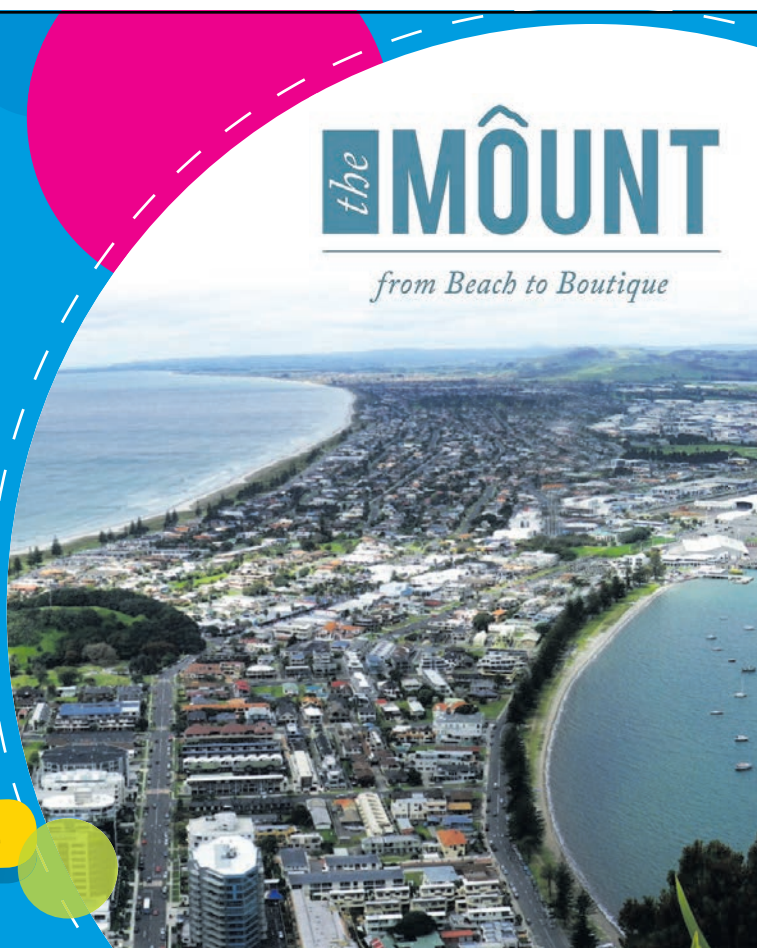
You will find some of the best
boutique shopping here in New Zealand
right in the heart of Mount Maunganui.
Options are sure to suit every taste, style
and budget. From high end women's and
men's fashion boutiques to trendy surf
shops, contemporary and fine art galleries,
souvenirs, exquisite jeweller's and bespoke
furniture - something is bound to catch
your eye.

Mount Mainstreet have over 60 different
cafes, bars and fine dining restaurants with
a central hub to relax and enjoy the sun
and atmosphere right in the heart of
Mount Mainstreet.

Say goodbye to big malls and shop in
the sunshine at one of the most popular
strips of shopping and dining in the country.
A relaxed atmosphere that you will not
forget with passionate locals and business
owners. Experience Mount Mainstreet.

WWW.MOUNTMAINSTREET.CO.NZ

the MÔUNT
from Beach to Boutique



Mount Maunganui

PILOT BAY

The beaches at Mount Maunganui are numerous and safe for swimmers and surfers. The top spot for swimming is the main

beach located at the foot of the Mount and facing the Pacific Ocean – always remember to swim between the flags. Pilot

Bay has calmer waters and safer for little kids. Also a great spot to hire a kayak. A family night out, bring a picnic dinner and a blanket

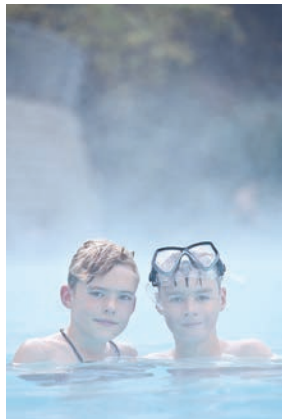
and watch the sun go down as the cruise ships depart the harbour. Crab a cruise ship schedule at www.port.tauranga.co.nz

CAFÉ CULTURE



Across from the main beach are a number of cafes to enjoy a meal or coffee while taking in the vibe and ambience of the area.

RELAX & UNWIND



Soak, relax and unwind at the Mount Maunganui Hot Salt Water Pools. www.mounthotpools.co.nz

SHOPPING DELIGHT

Downtown at Mount Maunganui is popular for boutique and souvenir shopping and top class restaurants.

LOCAL ICON



On a hot day step into Copenhagen Cones and you won't be disappointed. Tasty waffle cones filled with ice cream or frozen yoghurt and a variety of yummy topping.

UP AND AROUND THE MT



The Mount base track is a great scenic walk and is suitable for all levels of fitness. Watch out for marine life as the walk takes you from surf to harbour.

Climb to the top of Mount Maunganui and be wowed at the 360° views out to Matakana and Mayor Islands and then the views over Mount main beach towards Papamoa and Whakatane. The walk is suited to a slightly more advanced level of fitness.

CLASSIC FLYERS

Classic Flyers Aviation Museum showcases some of NZ's best Classic and Vintage aircraft along with static and hands-on displays. Memorabilia can be viewed throughout three hangars as well as an outdoor interactive area. Enjoy a great coffee and fabulous food at the café, fun for the whole family.

We've got you covered from The Mount to Tauranga

Top Catch Tauranga,

40 Mirrielees Road
Sulphur Point, Tauranga

Ph 07 578-8439

Top Catch Mount Maunganui,

7/40 Totara Street,
Mount Maunganui

Ph 07 777-0065

Bait shop in Mount Maunganui,

147 Totara Street
Mount Maunganui

Ph 07 575-2787



- **Bait & Soft Bait**
- **Jigs & Lure**

- **Terminal Tackle**
- **Rod & Reel Combos**



All shops open Fisherman's hours

www.topcatch.co.nz

14 great stores - check www.topcatch.co.nz for locations

Papamoa & Te Puke

PAPAMOA HILLS

One of the most popular walks in the Bay is the cherished Papamoa Hills. With endless views overlooking the plains and coastline below, this walk certainly delivers in the scenery stakes. Enjoy a mixture of farmland, native forest and archaeological Māori pa sites – walking along the terraced pa remains gives an insight into the

prime positioning that pa sites required for defence purposes.

Te Puke is the Kiwifruit capital of the world. Stroll along the Te Puke Heritage Walkway and relax in the sunny outdoor plaza which links the town centre with nearby Jubilee Park. With a variety of shops and cafes, it is well worth stopping off for a break before heading south.

SHOP TILL YOU DROP

Just 400 metres from the beach, Papamoa Plaza has always been at the forefront of providing a great shopping experience. Anchored by The Warehouse and Countdown, Papamoa Plaza has that great lifestyle balance that this area is known for! With an amazing retail mix, the Plaza offers more than 40 shops including a Food Court, McDonalds, Paper Plus and Robert Harris to name a few. A two minute stroll away you'll find Fashion Island. The name speaks volumes – it's all about fashion! Retail stores include Bendon, Jacqui E, Portmans and Supre plus much more.

BLOKART ADVENTURE

Super easy to use and great fun for the family, blokarting, the land sailing machine. Or if you are more daring try the electric drift karts - three-wheeled machines that are designed to get you very sideways. Bookings essential.
www.baystation.co.nz



KAIATE FALLS

Kaiate Falls is a 30 minute drive from Tauranga. Sign-posted from Welcome Bay Road as "Kaiate Falls". Drive up Waitao Road and after about 4.9kms turn left at Kaiate Falls Road. Walk through the forest to the falls, where water tumbles down a ravine in a series of cascades. The swimming hole is located at the base of the lower falls. Is a beautiful spot to cool down in summer.



BUY YOUR NEXT TRAILER DIRECT FROM THE FACTORY AND SAVE \$\$\$\$



PRESCOTT TRAILERS

NZ's premier trailer manufacturer
48 years in business

Specialists in:

- Farm Trailers
- Stock Crates
- Road Trailers
- Builder's Trailers
- Shepherd's Trailers
- Commercial Trailers
- Trailer repairs and spare parts

All our trailers are:

- Galvanised
- Built with quality components

If our standard design is not suitable for your requirements, we will design and manufacture a trailer to meet them.

Ph 0800 888 323

www.prescotttrailers.co.nz

EXPLORE WHITE ISLAND

Cruise across the pristine waters of the Bay of Plenty to Whakaari/White Island – New Zealand's most active volcano.

Experience roaring steam vents, bubbling pits of mud, hot volcanic streams, and the amazing lake of steaming acid on your guided exploration of the crater floor with White Island Tours.



WHITE ISLAND TOURS

Tours | Accommodation | Cafe
0800 733 529 | whiteisland.co.nz

WATERFALL MOUNTAIN GLAMPING



**WE DO
VOUCHERS!**



**Looking for something a little different this summer?
Like camping but want a bit more comfort?**

How about feeling like you're off the beaten track, surrounded by beautiful native bush, next to a natural steam with a close by waterfall? Sounds superb right!

GLAMOROUS camping – glamping – has come to the Pakihi Valley, Opotiki, ready and waiting for holidaymakers to enjoy during the best of summer weather.

For anyone who loves the outdoors, pristine bush, peace and solitude, this latest get-away-from-it-all opportunity will be hard to go past!

**To book your night away... Email: one_chillipepper@yahoo.co.nz
Web: <http://waterfallmountainglamping.nz> Check us out on [f](#)**

WHAKATANE GOLF CLUB



Championship course – one of the finest golf courses in the Bay of Plenty.

With fast running greens and lush, forgiving fairways, the course offers golfers of all levels a challenging but rewarding 18 holes.

Relax afterwards at our lounge bar and restaurant/café with tasty home-made snacks and meals.

Par 70, 6009m course just 10 minutes from town near the airport.

181 Golf Links Rd, Paroa
07 308 8117 • whakatanegolfclub@gmail.com
www.whakatanegolf.com

EXPLORE OHIWA HARBOUR



Hire a kayak and explore the Ohiwa harbour.

With six islands, many hidden beaches and great picnic stops, it's a wonderful place to

explore and view the populated bird life. You may even get the chance to encounter rays and occasionally orca who visit the harbour.

Whakatāne



WAIRAKA, THE LADY ON THE ROCK

Located at the mouth of the Whakatāne River, Whakatāne is a unique coastal town with a variety of activities on offer. Being an active volcano, White Island is a key attraction

that can be visited by boat or helicopter. Visitors should also consider checking out the local beaches, swimming with dolphins, whale watching, chartered fishing cruises, surf tours and more.

ART HUB

The community's arts and culture hub, Te Kōputu a Te Whanga a Toi, hosts the Horizon Energy Library, the Whakatāne District Museum display and three gallery spaces. The Horizon Energy Library offers self-checkout, after-hours returns, comfortable places for reading and research, and interactive opportunities for young people. The Centre's Museum display offers engaging experiences with stories and taonga (treasures) of the Whakatāne District.



MOTU TRAILS CYCLEWAY

With three trails to choose from - and the option of combining them all - the Mōtū Trails offer a range of cycling itineraries depending on age, fitness level and riding ability. The trail stretches between Ōpōtiki in the Eastern Bay of Plenty, and Matawai, on the way to Gisborne. Your riding options include the spectacular Dunes Trail along the Pacific Coast, the magnificent Mōtū Road Trail through bush and historic farmland to/from Matawai, and the awesome adventure of the Pakihi Track.
www.motutrails.co.nz



EXPERIENCE THE POWER

Frontier Helicopters White Island Volcano Adventure takes you to the edge and into a continuously active volcano, a living breathing geological giant where you will experience the power of nature in its untouched form. Your view from high above takes in towering steam columns, bold landforms and intricate textures make for an awesome spectacle. Flying over the volcano you can sense the energy of each billowing crater and steam vents. Land, and take our one hour guided walk and experience the raw energy and rich colours of White Island.



MEET THE LOCALS

The Ōhope Craft Market is one of the Bay of Plenty's biggest and most vibrant markets with local crafts, food, plants and produce. Held every two weeks on Saturday from 8am over summer and monthly over winter. Talk to local food producers, pick up some bargains and see a range of crafts and gifts from local artisans.

LOCAL WILD FOOD CHALLENGE 2019

**Saturday, 2 February 2019 - 2:00pm to 8:00pm
at Mahy Reserve in Ōhope**

Whakatāne will host its fourth Local Wild Food Challenge. The challenge is to get outside and hunt, gather, forage, barter or fish for local wild food and create a dish of your choice, then write a story about it. If you are from Whakatāne, you will know that hunting, fishing and gathering is a way of life for us. Our region is brimming with wild food and natural abundance, which makes it perfect to hold an event with the purpose of creating an awareness of precious natural resources and the environment.

HORSE TREKKING LAKE OKAREKA

Horse Trek through 500 acres of native bush and 1500 acres of working sheep and cattle farm with stunning views of Lake Okareka, Lake Tarawera and Mount Tarawera. Horses to suit all abilities, with guided treks from 30 minutes to 3 hours.



Longfords Farm, 51 Acacia Road, Lake Okareka, Rotorua

M: 021 292 2233

Email: lucy@treklakeokareka.co.nz

Web: www.treklakeokareka.co.nz



New Zealand...

like you've
never seen it.

A Rotorua eco adventure
1000 years in the making



ZIPLINES



SWING
BRIDGES



ANCIENT NZ
FOREST



AMAZING
KIWI GUIDES



ALL AGE
ACTIVITY



AWARD
WINNING

www.canopytours.co.nz



WORLD FAMOUS POLYNESIAN SPA ROTORUA, NEW ZEALAND



RICH IN HISTORY, SCENERY, HEALTH/ WELLNESS. SIMPLY NOT TO BE MISSED WHEN VISITING NEW ZEALAND.

In the heart of New Zealand's geothermal region lies Polynesian Spa, a world leading, natural mineral bathing and luxury spa retreat, on the tranquil shores of Lake Rotorua.

Specialising in a range of health and wellness treatments, Polynesian Spa has a decadent spa therapy menu. From Aix spa therapies to body wraps, massage and facials, Polynesian Spa is the perfect place to relax and enjoy nature's gift.

ALL AGES | CATERING FOR GROUPS & INDIVIDUALS | OPENING HOURS TO FIT ANY TRAVEL ITINERARY



OPEN DAILY 8AM - 11PM | LAKESIDE HINEMOA STREET, ROTORUA, NORTH ISLAND, NZ | @ f

ROTORUA

ROTORUA MUSEUM BATHHOUSE

Rotorua is a geothermal wonderland with an abundance of activities and Māori culture. The city is home to a number of world-firsts

including the Luge, OGO, Zorb and the Shweeb as well as the highest commercially rafted waterfall in the world, Okere Falls. In Te Puia's

Whakarewarewa Valley, there are bubbling mud pools and the 30m-tall Pohutu Geyser, which erupts many times daily. It's also home to a living

Māori village and the New Zealand Māori Arts and Crafts Institute, with traditional wood carving and weaving schools.

ROTORUA CANOPY TOURS

Soar through the trees and experience New Zealand's ancient forest like never before.

Rotorua Canopy Tours is New Zealand's number one ranked outdoor experience on Trip Advisor. There are two unique eco-tour experiences to choose from, featuring a network of ziplines, suspended swing bridges, treetop platforms and forest trails. This is the New Zealand like you've never seen it!



RELAX AND UNWIND AT ROTORUA'S POLYNESIAN SPA

A world-leading, natural mineral bathing and day spa retreat. Geothermal waters nourish the skin and relieve tired muscles, aches and pains, while decadent therapies

rejuvenate through ancient and modern techniques. Combined with the healthy 88Ra café, Polynesian Spa restores the body inside and out.



SPECTACULAR

Take the Skyline Rotorua Gondola to the top of Mt Ngongotaha and take in the 180 degree views of Lake Rotorua, the city and surrounding

district. While you are there ride the luge, Skyswing and the Zoom Zipline. Relax with a glass of wine at the Volcanic Hills Winery.



THE THAI RESTAURANT & TAKEAWAY

FULLY LICENCED & BYO 07.348.6677



*The healthy heart of
Thai Cuisine Rotorua's Authentic
Thai Restaurant
As recommended by Lonely Planet*

Certificate of Excellence
2013 WINNER



The Thai Restaurant

Opening Hours:

12 noon - 2.30pm • 5pm until late

1141 Tutanekai Street, Lake End, Rotorua

www.thethairestaurant.co.nz



VR Rotorua Lake Resort

Located on the shores of beautiful Lake Rotoiti, and just 15 minutes' drive from central, lies VR Rotorua Lake Resort. This 4 star plus Qualmark hotel, is known for its idyllic setting and superb facilities.

We are fully equipped with modern amenities to make your stay a pleasurable one

- On call Babysitting service (with suitable notice)
- Gymnasium • Swimming Pool • Spa Pools and Sauna
- Laundry & dry-cleaning service

Each accommodation room in our hotel near Lake Rotorua features Sky TV, Personal Bar, Tea & Coffee making facilities, Under-floor Heating, Blue Earth Amenities, Separate Bath and Shower Unit and French Doors that open onto the Lawn or Balcony.

Picturesquely located on the banks of Lake Rotoiti, VR Rotorua Lake Resort is a unique lodge inspired resort. It is magnificently spread over 7 acres of beautifully landscaped gardens offering a truly spectacular atmosphere to engage in business or pleasure. If you wish to take time away from the bustle of city life to appreciate the quiet country ambience, then head to VR Rotorua Lake Resort to see what it has to offer.

Leisure & Pleasure at VR Rotorua Lake Resort

- Tennis Session (For two) \$20/hour • Kayak hire (For two) \$20/hour
- Bicycle hire \$20/hour • Hovercraft for hire \$30/hour



VR ROTORUA LAKE RESORT OKAWA BAY, NEW ZEALAND

366 State Highway 33, Mourea, Rotorua

T: +64 7 362 4599 | F: +64 9 950 6368 | Toll Free: 0800 505 900

E: rotorua.reservations@vrhotels.co.nz | W: www.vrrotorua.co.nz

GPS Location: S -38.048275, E 176.329451



ALWAYS A WARM welcome

Our decadent
dessert menu
is served all day

- We serve simple, fresh New Zealand food
- We are proud to serve the best beef in New Zealand – award-winning AngusPure steaks.



TAURANGA: 105 The Strand | 07 928 0444
ROTORUA: 209 Fenton Street | 07 347 0906

WHAKATANE: 79 The Strand | 07 308 9560
TAUPO: 29 Tongariro Street | 07 377 1112



Open 7 Days for Lunch & Dinner
from 12pm

Open all public holidays
(except Christmas Day)

Book a table online, give us a call or
come in and see us



THERMAL WONDERLAND

The Wai-O-Tapu Thermal Wonderland is spectacular, colourful and unique geothermal park. With steam and gases rising through the pools that create bubbles of mud that form and burst. The park occupies the site of what was formerly the largest mud volcano in New Zealand.

www.waiotapu.co.nz



WHAKAREWAREWA FOREST

Just 5 minutes from town is The Redwood Forest, where impressive Californian Coastal Redwoods dominate the skyline. With various walking tracks, mountain bike tracks and horse tracks, it is a great place to explore and get back to nature. It is dog friendly as well. A must-do, the Redwoods Treewalk. This is a 600-metre long, eco-tourism walk with a series of 23 suspension bridges, traversing 22 majestic Redwood trees that are more than 117-years-old.



EAT STREAT

Eat Streat is one of Rotorua's coolest hot spots in the city. At the lake end of Tutanekai Street, you will enjoy quality restaurants, cafés and bars as well as the famous Lady Jane's Ice Cream Parlour.

LOCAL SPOT

The Okere Falls Store caters to locals, tourists and holiday-makers. One of New Zealand's best eco-friendly cafe and store where you can enjoy a range of speciality food + great coffee, relax in the beer garden with a boutique beer or soak up the million dollar lake views with a glass of wine.



BLUE LAKE TRACK

Enjoy stunning views of the Blue and Green lake on this 1 ½ hour walk which takes you through secluded forests and lakeside beaches.



3D TRICK ART GALLERY

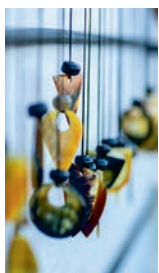
The first and only 3D Trick Art Gallery in New Zealand. It offers an educational, creative and imaginative experience to visitors of all ages. In the gallery, you can create over 50 masterpieces of your own. Come and have fun with your creativity and imagination. www.3dtrickart.co.nz

Taupō & Turangi

LAKE TAUPŌ

A favourite holiday destination Taupō is placed on the northern shores of Lake Taupō and offers a large choice in shopping and dining. Lake Taupō was formed by a massive

volcanic eruption some 26,500 years ago, which blew a 660sq km hole in the earth. Now the Great Lake is world-renown for trout fishing and water based recreation.

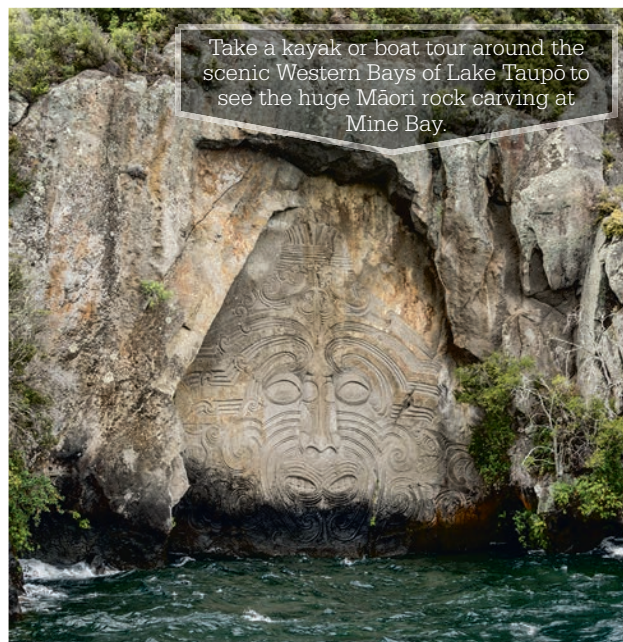


The Taupō Market is a vibrant, cheerful, weekly market that is

held every Saturday morning, rain or shine. Riverside Park, 1 Redoubt St, Taupō.

HUKA FALLS

For thrills, fun and excitement try jet boating along the beautiful Waikato River. Lined with native bush, sheer rock cliff face and hot water streams, boats reach an incredible 80km an hour and along the way you'll experience our thrilling 360° spins. www.hukafallsjet.com



Take a kayak or boat tour around the scenic Western Bays of Lake Taupō to see the huge Māori rock carving at Mine Bay.

BRIDGE TO NOWHERE Lodge and Tours

Mountains to Sea / Mangapurua Track | Whanganui River

For all your activities on the Whanganui River

- Bridge to Nowhere jet boat tours 4+ hours
- Mountain biking shuttles to and from track
- Canoeing - 2 hours to 2 day adventures
- Bridge to Nowhere Lodge - fully catered or backpacker accommodation, licensed bar
- Bridge to Nowhere Campground - cabins, hot showers
- Tramping - Mangapurua and Matemateaonga Tracks



Freephone **0800 480 308** or
06 385 4622

Email: info@bridgetonowhere.co.nz

Web www.bridgetonowhere.co.nz

BOOKINGS ARE ESSENTIAL



Bridge to Nowhere
Whanganui River, New Zealand

HIKE THE TONGARIRO ALPINE CROSSING

One of New Zealand's greatest walks. The 19.4 km track will take you through volcanic alpine terrain, hike around an active volcano and descend into the water-filled craters known as the Emerald Lakes. Enjoy views of Mount Ngauruhoe. Weather conditions in this area

can change rapidly. Please ensure you are properly prepared before setting out. Visit the DOC website for more info www.doc.govt.nz/parks-and-recreation/places-to-go/central-north-island/places/tongariro-national-park/things-to-do/tracks/tongariro-alpine-crossing



Huka Falls Spa Park Walk is an easy walk taking about 2 hours return. Follow the Waikato River above the falls and admire the awe inspiring views from various viewing balconies.



TONGARIRO NATIONAL TROUT CENTRE

Discover the world of freshwater trout in this education facility set amongst native trees, rivers and home to native birds. Visit the trout hatchery and fresh water aquarium. Have a picnic by the pond and feed the trout. Kids can even fish for their own trout. www.troutcentre.com

Wining and Dining



CHEAPER EVERY DAY FROM **\$5** EACH PICK UP

VALUE PIZZAS OR SELECTED SIDES **INSTORE & ONLINE**

*Conditions apply. Selected stores only. Prices subject to change.

Tauranga Fish and Dive

60 Cross Road – next to boat ramp
Open Friday 5pm and Sundays 4.30pm

Meals value for money and Fully licenced bar • Family atmosphere

BROADLANDS RD, REPOROA
073338408

THE WOOLSHED TAVERN

Historic Tavern
Food & Drinks
Fine Dining & Experience

Karangahake Winery Estate - Go Beyond the Grapel

07 862 8874
23b Moresby Street
Karangahake, RD4 Paeroa 3674

www.forbiddenfruitwine.co.nz

"Rest & Refresh"
after a long drive or hard peddle!

ALTOGETHER FOR A BETTER RESULT

The knowledgeable and passionate salespeople Bayleys have across all areas of property, mean we can confidently promise our clients the very best service and skills.

A powerful combination of local market knowledge, national and global reach, plus innovative marketing tools will ensure you get the best result.

Whatever your property needs, contact your local office today.

Bayleys Mt Maunganui



Bayleys Tauranga



Bayleys Mt Maunganui

07 572 1580 | info@bayleymount.co.nz

Bayleys Tauranga

07 578 2118 | info@bayleystauranga.co.nz

Bayleys Rotorua

07 349 3210 | info@bayleysrotorua.co.nz

bayleys.co.nz

SUCCESS REALTY LTD, BAYLEYS, LICENSED UNDER THE REA ACT 2008



ALTOGETHER BETTER

Residential / Commercial / Rural / Property Services