

Embargoed until 10:45am – 29 October 2009

## Overseas Merchandise Trade: September 2009

### Highlights

#### September 2009 quarter:

Values are seasonally adjusted and compared with the June 2009 quarter unless otherwise stated.

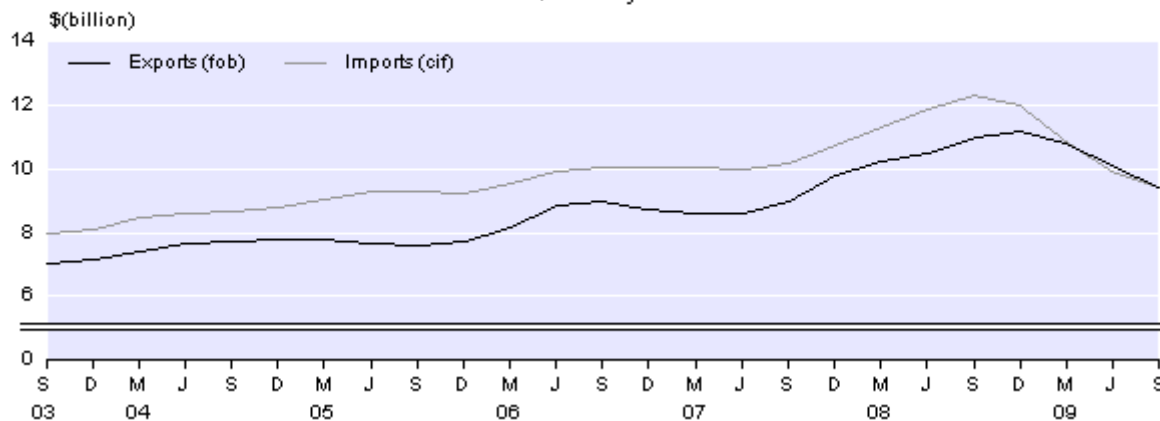
- Imports declined to December 2005 levels to \$9.5 billion.
- Imports of capital goods made the largest contribution to the decrease, followed by consumption goods.
- Exports decreased 6.8 percent to \$9.4 billion, the third consecutive quarterly decrease.
- Meat and edible offal showed the largest decrease, followed by milk powder, butter, and cheese.
- The trade balance was a deficit of \$104 million (1.1 percent of exports).

#### September 2009 month:

Values are actual and compared with the September 2008 month unless otherwise stated.

- Imports were valued at \$3.2 billion, down \$1.2 billion or 26.6 percent.
- Crude oil imports showed the largest decrease, with prices nearly half what they were in September 2008.
- Exports were valued at \$2.8 billion, down \$347 million or 10.9 percent.
- Milk powder, butter, and cheese showed the largest decrease.
- The trade balance was a deficit of \$424 million (15.0 percent of exports). Less than half the average of the preceding five September months.

Merchandise Trend Values  
Quarterly



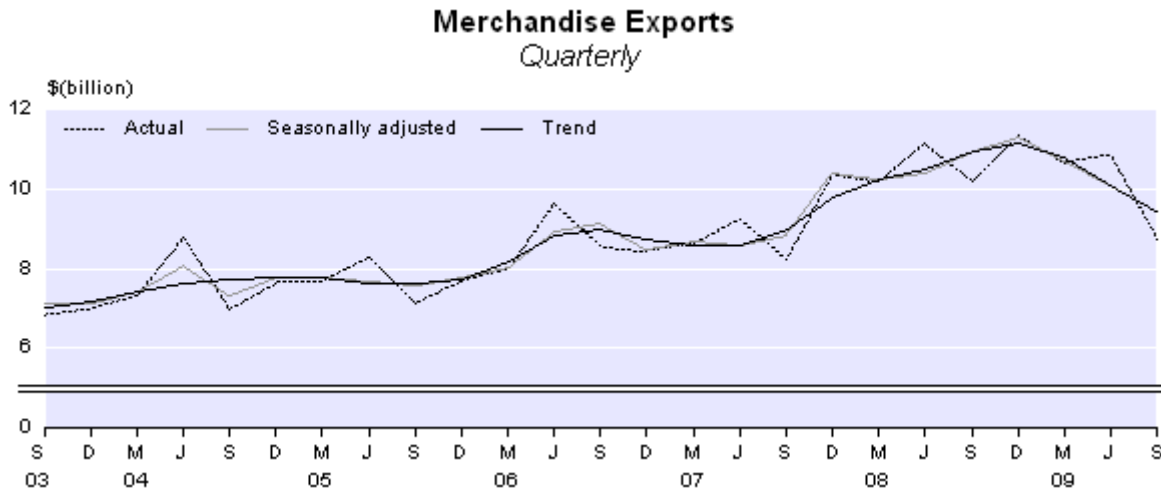
Cathryn Ashley-Jones  
Acting Government Statistician

29 October 2009  
ISSN 1178-0320

## Commentary

### Seasonally adjusted exports – September 2009 quarter

The seasonally adjusted value of merchandise exports fell 6.8 percent in the September 2009 quarter to \$9.4 billion. This is the third consecutive quarterly decrease, and follows a 5.5 percent decrease in the June quarter.

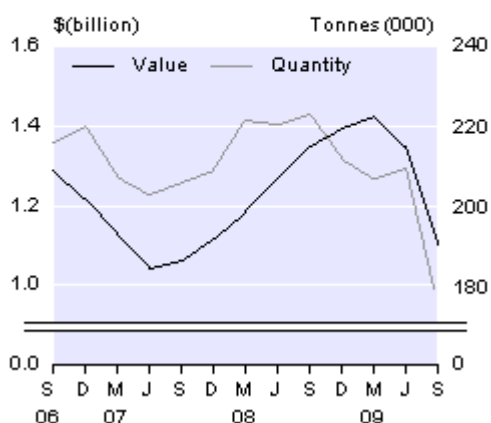


Since reaching its highest point in the December 2008 quarter, the trend for total merchandise exports has fallen 15.5 percent, the sharpest fall in the trend series since the series began in 1988. This fall is slightly larger than the 14.9 percent fall that occurred over eight quarters starting in the December 2001 quarter.

Nine of the top 10 commodity groupings in table 12 (top 10 Harmonised System categories) recorded decreases this quarter. Meat and edible offal recorded the largest decrease, down 18.3 percent (\$246 million) with a 16.0 percent decrease in the quantities exported. Milk powder, butter, and cheese also recorded a decrease, down 5.6 percent (\$119 million), despite a slight (2.0 percent) increase in quantities. Mechanical machinery and equipment also recorded a large decrease this quarter, down 14.1 percent (\$61 million).

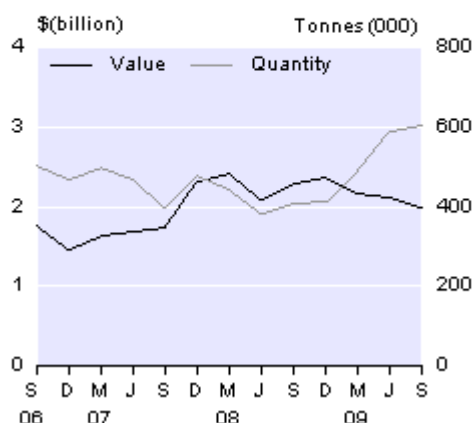
### Meat and Edible Offal Exports

Quarterly values and quantities  
Seasonally adjusted



### Milk Powder, Butter, and Cheese Exports

Quarterly values and quantities  
Seasonally adjusted



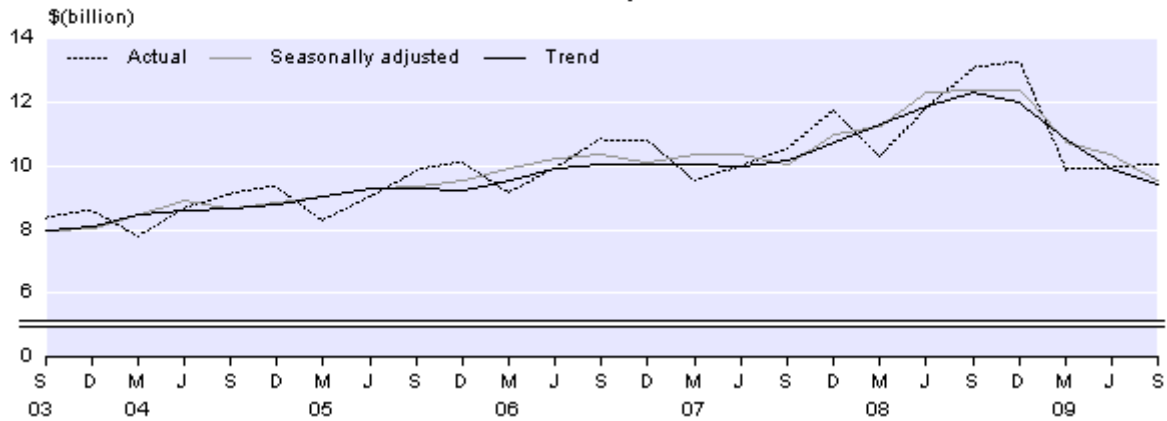
Crude oil, which is not seasonally adjusted, was the commodity with the largest rise in the September 2009 quarter, up 40.2 percent (\$167 million). This rise was price driven, with a 10.4 percent increase in quantities. This rise in crude oil exports follows an increase of 63.7 percent in the June quarter, which coincided with the commencement of oil exports from the Maari oil field in April 2009.

### Seasonally adjusted imports – September 2009 quarter

The seasonally adjusted value of merchandise imports decreased 8.1 percent to \$9.5 billion in the September 2009 quarter. This follows falls of 13.2 percent and 3.4 percent in the March and June 2009 quarters respectively. Seasonally adjusted imports have now declined to a similar level to what they were in the December 2005 quarter. The June 2009 quarter includes the one-off import of several large aircraft valued at \$571 million, which affects comparisons with adjacent quarters. The seasonally adjusted value of imports would have decreased only 2.8 percent in the September 2009 quarter if the one-off import of aircraft was excluded from the June 2009 quarter import value.

Since reaching its highest level ever in the September 2008 quarter, the trend for total merchandise imports has fallen 23.6 percent, the largest fall in the trend series since it began in 1988. Large one-off imports over \$100 million are excluded from the trend series calculation.

## Merchandise Imports Quarterly

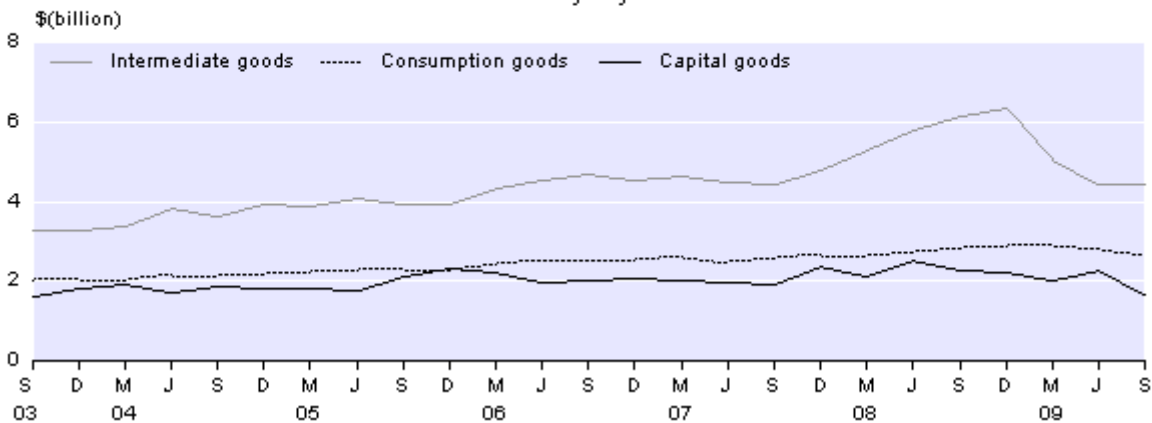


Of the broad economic groups, capital goods showed the largest decline in the September 2009 quarter, followed by consumption goods, and petrol and avgas. These decreases were partly offset by increases in, passenger cars, military, and other goods and intermediate goods.

Capital goods imports fell 27.2 percent (\$621 million) in the September 2009 quarter, mainly because of a 70.1 percent (\$543 million) fall in transport equipment, and are now at their lowest level since the September 2003 quarter. This fall was from a high level in the June 2009 quarter, which included the one-off importation of large aircraft mentioned above. Machinery and plant declined 5.2 percent (\$78 million) in the September 2009 quarter, following a decline of 14.4 percent in the June 2009 quarter.

## Imports by Broad Economic Category

Quarterly  
Seasonally adjusted

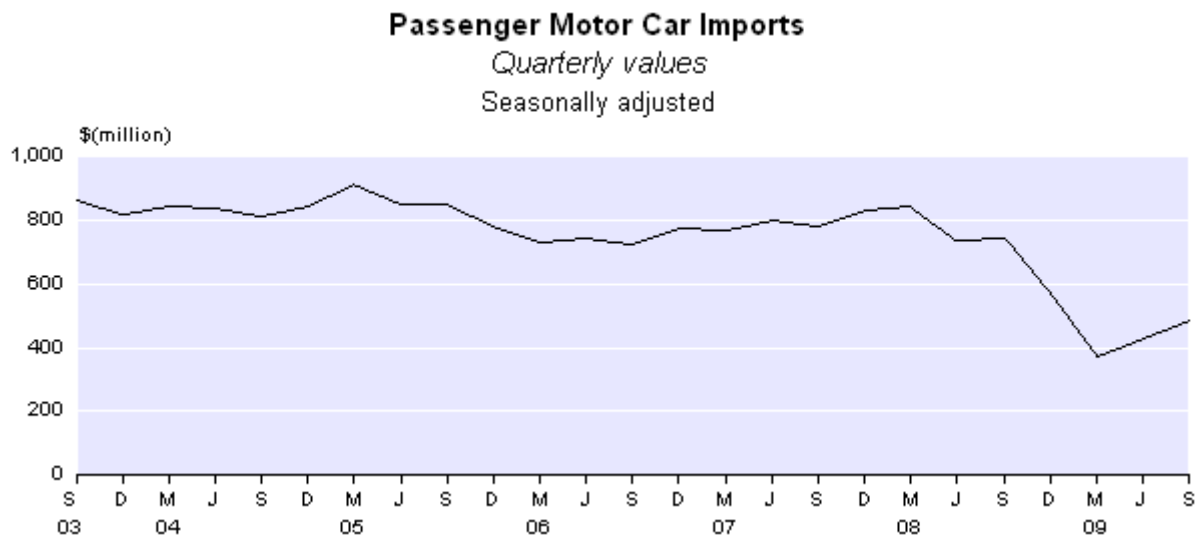


Consumption goods declined 5.7 percent (\$162 million) in the September 2009 quarter, following a 3.3 percent decline in the June 2009 quarter. The main contributors to this decline were: durable consumer goods; processed food and beverages, mainly for household consumption; and semi durable goods (includes items such as glassware, cutlery, and apparel).

Petrol and avgas fell 6.9 percent (\$19 million) in the September 2009 quarter.

Intermediate goods were virtually unchanged this quarter, rising 0.1 percent (\$5 million), following a 12.2 percent fall in the June 2009 quarter. There were significant rises in parts and accessories of transport equipment, up 40.3 percent (\$156 million) and processed fuels and lubricants (other than motor spirit), up 16.7 percent (\$59 million). These increases were mostly offset by a fall in processed industrial supplies, down 9.2 percent (\$192 million). Crude oil, which is not seasonally adjusted, rose 37.5 percent (\$229 million). Crude oil is imported in large, irregular shipments, which can give rise to large fluctuations in quantities and values.

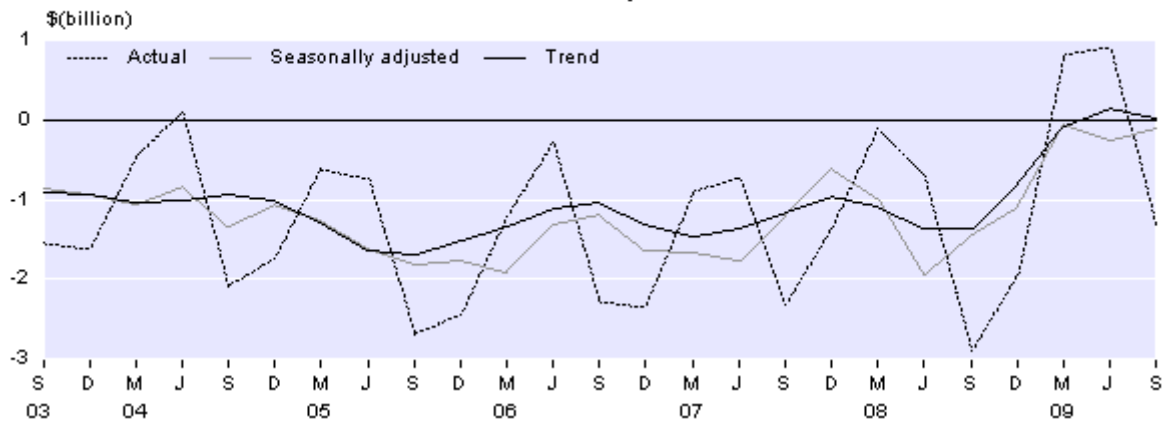
Passenger cars rose 13.4 percent (\$57 million) in the September 2009 quarter, following a 14.4 percent rise in the June 2009 quarter. The last two quarterly increases are from a low level, with the March 2009 quarter value being the lowest since the September 1997 quarter.



### Seasonally adjusted trade balance – September 2009 quarter

The seasonally adjusted merchandise trade balance for the September 2009 quarter was a deficit of \$104 million (1.1 percent of exports), following deficits of 0.4 percent and 2.6 percent of exports in the March and June 2009 quarters respectively. Prior to the March 2009 quarter, trade deficits of less than 5 percent of exports had not been seen since the first half of 2002. The most recent quarterly seasonally adjusted trade surplus was in the December 2001 quarter.

## Merchandise Trade Balance Quarterly



### September 2009 month – actual values

In the month of September 2009, merchandise exports were valued at \$2.8 billion, down \$347 million (10.9 percent) from September 2008. This is the fourth consecutive monthly fall in exports compared with the same month of the previous year.

The trend for merchandise exports has decreased 13.1 percent since peaking in October 2008.

In September 2009, key increases and decreases in exports by commodity and by country of destination compared with September 2008 were as follows:

By commodity:

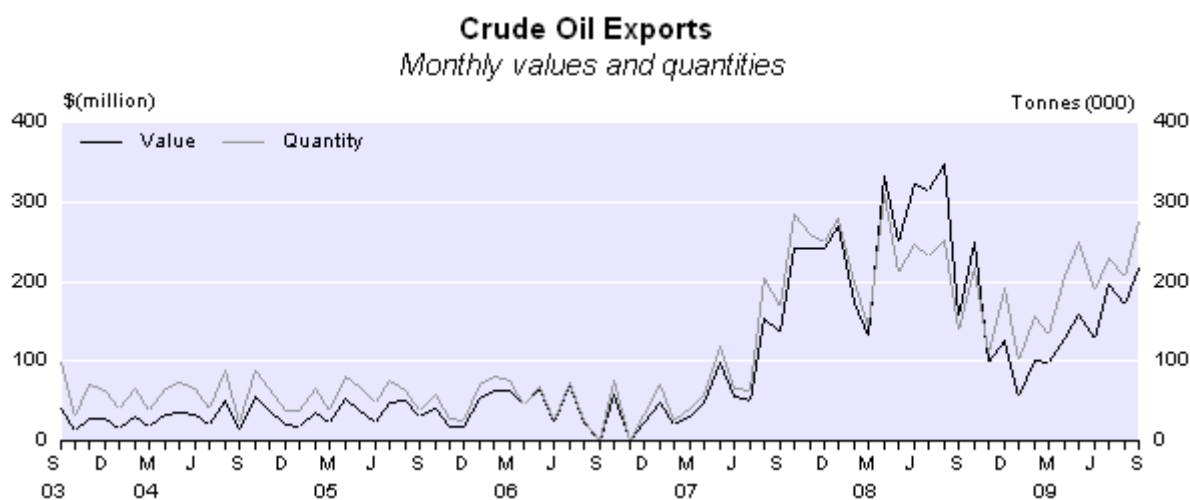
- Milk powder, butter, and cheese decreased \$95 million (18.0 percent), despite overall quantities being up 55.5 percent. There were declines over several commodities, with large decreases in cheddar cheese and anhydrous milk fat. Whole milk powder export values were virtually unchanged, while quantities doubled.
- The second largest decrease for the month was aluminium and aluminium articles down \$46 million (34.3 percent), led by unwrought aluminium, down \$41 million (37.2 percent) and was largely price driven, with quantity down 7.0 percent.
- The next largest decrease for the month was mechanical machinery and equipment, down \$43 million (24.9 percent).
- Crude oil showed the largest increase, up \$60 million (38.4 percent), with the quantity exported being twice that of September 2008.
- The next largest increases were in logs, wood and wood articles, up \$22 million (11.4 percent), led by pinus radiata logs, up \$35 million (61.3 percent), and wood pulp and waste paper, up \$12 million (24.1 percent).

By country of destination:

- Exports to the United States of America had the largest decrease in September 2009, down \$103 million (34.6 percent), with casein and caseinates down \$28 million (238 percent); and meat and edible offal down \$23 million (40.2 percent),

led by frozen bovine cuts and sheep meat. The largest increase in exports to the United States was kiwifruit, up almost 200 percent or \$3 million.

- The next largest decrease was in exports to Japan, down \$47 million (18.4 percent). Aluminium and aluminium articles were the largest decline, down \$38 million (50.1 percent), and was almost entirely accounted for by declines in unwrought aluminium. Milk powder, butter, and cheese exports were down \$15 million (57.2 percent), led by cheddar, down \$8 million (81.5 percent). Casein and caseinates were down \$10 million (58.8 percent). Wood pulp and waste paper were up \$12 million.
- Singapore was the destination with the largest increase in exports, up \$35 million (76.6 percent), led by crude oil, up \$38 million.
- The second largest increase was to the People's Republic of China, up \$33 million (16.1 percent). Logs, wood and wood articles increased by \$31 million (86.4 percent), led by pinus radiata logs. Milk powder, butter, and cheese increased \$27 million (94.6 percent), led by concentrated unsweetened whole milk powder. These increases were partly offset by a decrease in infant formula, down \$23 million (94.9 percent).



In September 2009, merchandise imports were valued at \$3.2 billion, down \$1.2 billion (26.6 percent) from September 2008. Excluding one-off imports, import values have now fallen by 19 percent or more for each of the last six months, when compared with the same month of the previous year.

The trend for merchandise imports has been decreasing since August 2008, and is down 25.4 percent since then.

In September 2009 compared with September 2008, import values declined across almost all of the top 40 commodity categories and the top 25 countries by country of origin. Key decreases and increases in imports by commodity and by country of origin were as follows:

By commodity:

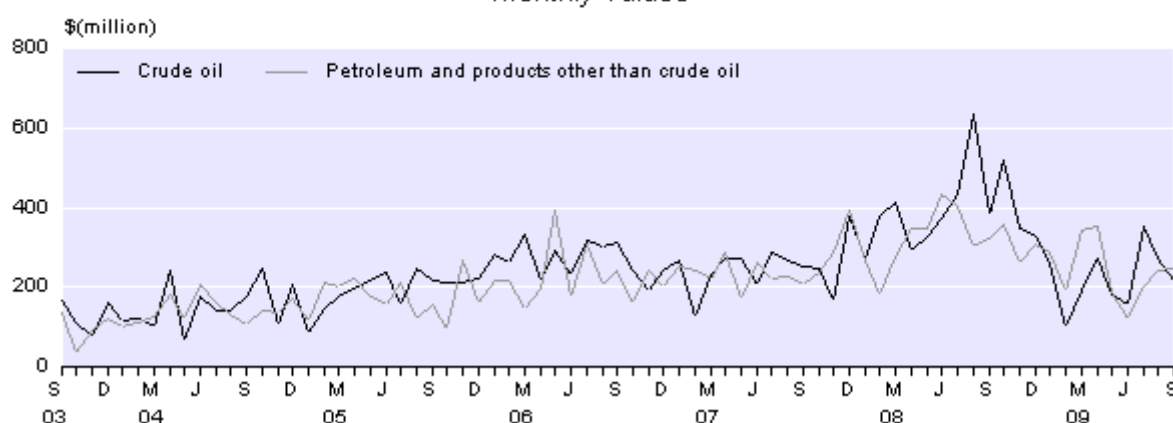
- Petroleum and products recorded the largest decrease, down \$242 million (34.3 percent). Crude oil led this decrease due to lower prices, with prices nearly half what they were in September 2008.

- Vehicles, parts and accessories was the next largest decrease, down \$172 million (42.5 percent), as imports of passenger motor cars fell by \$76 million (33.0 percent), goods transport vehicles fell by \$55 million (75.0 percent), and tractors fell \$17 million (64.3 percent).
- Mechanical machinery and equipment decreased \$136 million (26.9 percent), across a wide range of products.
- Fertilisers decreased \$122 million (70.0 percent), led by a fall in urea due to greatly reduced quantities and prices. Salt, earths, stone, lime, and cement decreased \$97 million (84.3 percent), led by a fall in natural calcium phosphates, again with greatly reduced quantities and prices for this commodity.
- By comparison, increases in imports were fewer and smaller, the largest being sugars and sugar confectionery, up \$7 million (31.8 percent), and essential oils, perfumes, and toiletries, up \$4 million (8.9 percent).

By country of origin:

- The largest decrease in imports by country of origin came from Japan, down \$212 million (54.5 percent), led by decreases in automotive diesel, with none imported from there this September, and lower vehicle imports (mainly passenger cars).
- The next largest decrease by country of origin was from Indonesia, down \$211 million (82.4 percent), mostly due to a decrease in crude oil, with none imported from there in September 2009.
- The largest increases in imports by country of origin came from Brunei Darussalam, up \$33 million, and United Arab Emirates, up \$16 million (48.2 percent). The increase for Brunei was mainly due to crude oil, while the increase for United Arab Emirates was mainly due to partly refined crude.

**Petroleum and Products Imports**  
*Monthly values*



### Trade balance – September 2009 actual values

The merchandise trade balance for the September 2009 month was a deficit of \$424 million (15.0 percent of exports). As a percentage of exports, the September trade deficit is less than half the average of the preceding five September months (33.8 percent of exports).

The trade balance for the September 2009 year was a deficit of \$1.5 billion (3.7 percent of exports), compared with an average deficit of 10.5 percent of exports over the last 10 September years.

## **Year ended September 2009 – actual values**

The value of merchandise exports for the year ended September 2009 was \$41.6 billion, down 0.9 percent (\$381 million) from the year ended September 2008. In the year ended September 2009, key increases and decreases in exports compared with the year ended September 2008 were as follows:

By commodity:

- Crude oil recorded the largest decrease, down \$1.3 billion (42.9 percent), as both prices and quantities fell.
- Aluminium and aluminium articles recorded the next largest decrease, down \$469 million (32.4 percent), led by unwrought aluminium.
- Milk powder, butter, and cheese declined \$382 million (4.2 percent), led by whole milk powder.
- Meat and edible offal recorded the largest increase, up \$408 million (8.3 percent), led by sheep meat.
- Logs, wood and wood articles exports rose \$316 million (15.4 percent) – the next largest increase, led by pinus radiata logs.
- Preparations of cereals, flour, and starch was the next largest increase, up \$227 million (29.9 percent).

By country of destination:

- Australia had the largest decrease of any country, down \$635 million (6.4 percent), led by crude oil.
- Thailand had the next largest decrease, down \$276 million (34.0 percent), also led by crude oil, with no crude oil exports to Thailand in the last twelve months.
- China had the largest increase of any country, up \$1.3 billion (57.7 percent), led by milk powder, butter, and cheese; logs, wood and wood articles (mainly pinus radiata logs); and by preparations of cereals, flour, and starch.
- The next largest increase by country was to the United States of America, up \$353 million (8.6 percent), led by milk powder, butter, and cheese; albuminoidal substances, modified starches, glues, and enzymes (largely casein and caseinates); and meat and edible offal.

The value of merchandise imports in the year ended September 2009 was \$43.1 billion, down 8.3 percent on the previous September year. Key increases and decreases in imports by commodity and by country of origin were as follows:

By commodity:

- Vehicles, parts and accessories had the largest decrease, down 1.9 billion (35.7 percent). This decrease was led by a \$1.3 billion decrease in passenger cars. Petrol cars with a 1500-3000cc rating decreased \$521 million, and those with a cc

rating exceeding 3000 decreased \$461 million. In addition, imports of goods vehicles decreased \$552 million.

- Petroleum and products had the next largest decrease, down \$1.8 billion (22.1 percent).
- Mechanical machinery and equipment decreased \$517 million (8.6 percent), led by a decrease in well sinking and boring machinery, down \$306 million. This was mainly due to an oil platform that was imported in the previous September year in April 2008.
- The largest offsetting increase was aircraft and parts, up \$414 million (42.0 percent), mainly due to an increase in aircraft parts and the importation of large aircraft, the latter being associated with the one-off importation of large aircraft in June 2009.
- Electrical machinery and equipment was the next largest increase, up \$343 million (8.9 percent), led by electricity generators and mobile phones.

By country of origin:

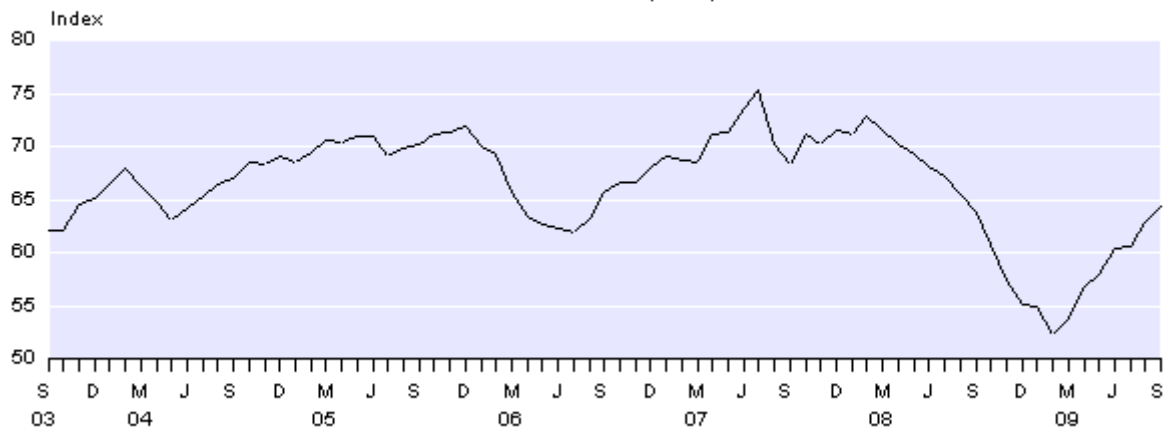
- Australia recorded the largest annual decrease, down \$1.1 billion (12.0 percent), led by vehicles parts and accessories, down \$339 million; petroleum products, down \$308 million; and iron and steel, down \$135 million.
- Imports from Japan showed the next largest decrease, down \$930 million (22.6 percent), led by vehicles parts and accessories, down \$756 million; and mechanical machinery and equipment, down \$154 million.
- Imports from Malaysia were down \$731 million (37.9 percent), led by mechanical machinery and equipment, down \$335 million, due mainly to the importation of an oil platform in the previous year, as mentioned above. Crude oil was also a large downward contributor.
- The largest increase by country of origin was France, up \$651 million (86.5 percent), mainly as a result of the one-off import of aircraft in June 2009.
- The next largest increase by country of origin was China, up \$316 million (5.2 percent). This was spread across a number of commodities, with electrical machinery and equipment, up \$147 million (including items such as mobile phones and televisions), being the leading contributor.

## **Exchange rate movements**

According to the Reserve Bank's Trade Weighted Index (TWI), the New Zealand dollar was 2.3 percent higher in September 2009 compared with August 2009, and 0.8 percent higher compared with September 2008. The TWI has now risen every month since February 2009, and is 22.9 percent higher since then.

The TWI rose 7.2 percent in the September 2009 quarter, compared with the June 2009 quarter, the second quarterly rise following four quarters of falls. The TWI is 4.5 percent lower in the September 2009 quarter than it was in the same period of the previous year.

**Trade Weighted Index**  
*Monthly*  
 Base: June 1979 (=100)



Source: Reserve Bank of New Zealand

## Updates to previous statistics

Provisional values published on 25 September 2009 have been updated. Merchandise trade statistics for the latest three months are provisional to allow for the inclusion of late data and amendments.

	Published on 25 September 2009			Published on 29 October 2009			Change		
	\$ (million) <sup>(1)</sup>			\$ (million) <sup>(1)</sup>			\$ (million) <sup>(1)</sup>		
	Exports (fob)	Imports (cif)	Balance (fob-cif)	Exports (fob)	Imports (cif)	Balance (fob-cif)	Exports (fob)	Imports (cif)	Balance (fob-cif)
Month of:									
Jun 2009	P 3,233	3,565	-331	3,233	3,564	-331	0	-1	0
Jul 2009	P 3,176	3,351	-175	3,174	3,351	-176	-2	-1	-2
Aug 2009	P 2,744	3,469	-725	2,743	3,463	-719	-1	-7	5
Year ended:									
Jun 2009	P 43,029	46,139	-3,111	43,028	46,139	-3,110	0	-1	0
Jul 2009	P 42,773	45,261	-2,488	42,771	45,260	-2,490	-2	-1	-1
Aug 2009	P 41,943	44,308	-2,365	41,939	44,300	-2,361	-4	-8	4

(1) Figures are calculated on unrounded data.

**Symbol:**

P provisional

For technical information contact:  
 Henry Minish or Scott Davis  
 Christchurch 03 964 8700  
**Email:** [overseastrade@stats.govt.nz](mailto:overseastrade@stats.govt.nz)

### Next release...

*Overseas Merchandise Trade: October 2009* will be released on 27 November 2009.

## Technical notes

### Definitions

billion	1,000 million.
capital goods	Produced assets used repeatedly or continuously, for longer than one year, in industrial production processes. Examples are machinery, trucks and aircraft.
cif	Cost of goods, including insurance and freight to New Zealand.
consumption goods	Goods used (without further transformation in industrial production processes) by households, government or non-profit institutions serving households.
fob	Free on board (the value of goods at New Zealand ports before export).
Infoshare	Free-of-charge online tool that gives you access to a range of time-series data.
intermediate goods	Goods used up or transformed in industrial production processes.
merchandise trade	Exports or imports of goods that alter the nation's stock of material resources. Includes goods leased for a year or more. Excludes goods for repair.
provisional	Statistics for the latest three months are provisional, to allow for the inclusion of late data and amendments.
re-exports	Merchandise exports that were earlier imported into New Zealand and comprise less than 50 percent New Zealand content by value.
vfd	Value for duty (the value of imports before insurance and freight costs are added).

### Data source

Data is obtained from export and import entry documents lodged with the New Zealand Customs Service (NZCS). The data is processed and passed to Statistics NZ for further editing and compilation.

### Valuations

*Exports* (including re-exports) are valued fob (free on board) and are shown in New Zealand dollars. Estimated values are used for goods that are not already sold at the time of export entry lodgement.

*Imports* are valued at cif (cost including insurance and freight) and are shown in New Zealand dollars.

*Trade balance* values are calculated by deducting imports (cif) from exports (fob). These two valuations are not entirely comparable, because the cif valuation includes insurance and freight to New Zealand while the fob valuation excludes insurance and freight from New Zealand. However, imports in Tables 1 and 2 are also shown at the vfd (value for duty) level, which excludes the insurance and freight component.

## **Exchange rates**

*Export* values given in foreign currencies are converted by Statistics New Zealand into New Zealand dollars, using weekly exchange rates when the statistics are compiled. For exports, a rise in the New Zealand dollar has a downward influence on prices, quantities and values.

*Import* values are converted from foreign currencies when import documents are processed by NZCS. The exchange rates used are set by NZCS each fortnight. These rates are prepared 11 days prior to the start of the fortnight, so have a lag of 11 to 25 days compared with the daily rates published by the Reserve Bank. For imports, a rise in the New Zealand dollar has a downward influence on prices and an upward influence on quantities. The combined influence on values can be either positive or negative.

## **Time of recording**

### **Exports**

From the August 1997 reference month, exports are compiled by date of export. Previously, exports were generally compiled according to date of clearance by NZCS. This meant that some goods were allocated to the month following their actual month of export. Exports up to July 1997 that were not processed until August 1997 were assigned to the month of August 1997.

From 1 March 2004, NZCS do not allow goods to be loaded for export until an export entry has been lodged and cleared. A study undertaken in 2001/02 indicated that export entries not being lodged might account for between 1 and 3 percent of exports at that time. There is a possibility that the change in NZCS processes may have reduced this undercoverage, although this has not been quantified.

### **Imports**

Imports are generally compiled by date of entry clearance by NZCS. NZCS entries are required from up to five days before, to 20 working days after, arrival of goods into New Zealand. The exception to this rule is for crude oil imports, which can have entries lodged later than 20 working days after entry into New Zealand.

Crude oil values for the latest month are estimated using actual quantities and country of origin data (provided by NZCS, based on information from the refinery at Marsden Point), together with estimated prices. These estimates for crude oil are replaced once actual entries are lodged with NZCS.

While all entries are provisional for the latest three months, and have the potential to be changed by the importer/exporter within this period, changes are not common, and generally do not have a material impact on the results. However, New Zealand has only a few ships carrying crude oil arriving each month, and each ship represents a high proportion of the monthly total of imported crude oil. Any variation in the data for crude oil resulting from a later lodgement date can result in a significant revision to the value. Once actual lodgements are received by Statistics NZ from NZCS, the value for crude oil can be regarded as robust.

There were 22 working days in September 2009, compared with 22 in September 2008.

## **Commodity classification**

Commodities are classified according to the New Zealand Harmonised System Classification (NZHSC).

The NZHSC was revised, from the January 2007 reference month, to incorporate changes promulgated by the World Customs Organisation. Details can be found in the *Overseas Merchandise Trade: January 2007* Hot Off The Press released on 26 February 2007.

## **Standard International Trade Classification**

The Standard International Trade Classification (SITC) is an output classification (using HS codes at the 6-digit level as building blocks), designed by the United Nations as an analytical tool for economic analysis, which includes some simple implications regarding level of processing. Published figures are at a high level of aggregation; more disaggregated information is available on [Infoshare](#). For customised jobs using the SITC Rev 4 classification, contact customer services at: [info@stats.govt.nz](mailto:info@stats.govt.nz).

## **Broad economic category groups**

Broad economic category (BEC) groups are arranged, as far as practicable, to align with the System of National Accounts' three basic classes: capital goods, intermediate goods and consumption goods. Commodities in BEC groups are categorised on the basis of their main end use. This means, for example, that all video recorders are treated as consumption goods even though some are used in business. Similarly, all helicopters are treated as transport equipment even though some are military goods (and are treated as such in the National Accounts).

## **Trend series**

Time series can be split into trend, seasonal and irregular components. Seasonal adjustment removes the seasonal component, while trend estimation removes the seasonal and irregular components. Trend estimates reveal the underlying direction of movement in a series and are used to identify turning points.

The trend series are calculated using X-12-ARIMA, which adjusts for outlying values and uses a centred moving average. The length of the centred moving average is selected automatically and can be 9, 13 or 23 months, depending on the relative variability of the

irregular component compared with the trend. A long moving average has the effect of smoothing the trend series but slowing the response to underlying changes in growth rates, while a short moving average produces a trend series that is less smooth but quicker to identify turning points.

To improve estimation of the underlying movement, the imports trend is calculated after removal of individual import items that have cif values of \$100 million or more, such as large aircraft and ships. The trade balance trend is calculated by subtracting the imports trend from the exports trend.

Trend figures are recalculated each month. The use of new monthly data means that previously published trend estimates are subject to revision. These revisions affect mainly the latest months and can be large if a trade value is initially treated as an outlier but is later found to be part of the underlying trend.

## **Seasonally adjusted series**

These are calculated for calendar quarters, using X-12-ARIMA, and published in the March, June, September and December releases.

Seasonal adjustment removes the estimated impact of regular seasonal events, such as pre-Christmas purchasing, from time series. This makes the figures for adjacent periods more comparable. Seasonally adjusted figures are estimates and are subject to revision each quarter, with the largest changes generally occurring in the latest quarters.

Further information is on the [Statistics NZ website](#).

## **Confidential items**

Under Section 37A (d) of the Statistics Act, the Government Statistician may disclose details of external trade, movement of ships, and cargo handled at ports. However, Statistics New Zealand understands that the release of merchandise trade commodity information can, in some cases, place commercially sensitive information in the public domain. Statistics New Zealand is able to provide a limited form of confidential status for commodity items (at the discretion of the Government Statistician), upon application by a company or business.

In practice, all confidential HS codes are aggregated into the code 9809.00.00.00 in order to protect their confidentiality and to maintain total export and import values. Any aggregations of Harmonised System (HS) codes below this level, which encompass confidential 10 digit codes, exclude the confidential value(s) for these codes.

The only aggregates that include the confidential codes are total exports, total imports, and the total exports and imports by country.

## **Concepts**

Overseas Merchandise Trade (OMT) statistics are compiled in close accordance with the United Nations' International Merchandise Trade Statistics Concepts and Definitions. OMT data, after adjustment, is used in the Balance of Payments and National Accounts.

The adjustments are for coverage, timing, valuation and classification, and are explained in the Balance of Payments – Sources and Methods 2004 publication.

## **Additional information**

Other information on overseas trade is available from:

- Statistics NZ Home page: <http://www.stats.govt.nz/>
- [Infoshare](#)
- *Key Statistics* – the quarterly statistical publication
- *The New Zealand Official Yearbook*.

Related Hot Off The Press releases are:

- *Overseas Trade Indexes (Prices)* ISSN 1178-0339
- *Overseas Trade Indexes (Volumes)* ISSN 1178-0347
- *Balance of Payments (quarterly)* ISSN 1178-0215
- *Balance of Payments (annual)* ISSN 1178-0223
- *Economic Survey of Manufacturing* ISSN 1178-024X.

## **More information**

For more information, follow the [link](#) from the Technical notes of this release on the Statistics NZ website.

## **Copyright**

Information obtained from Statistics NZ may be freely used, reproduced, or quoted unless otherwise specified. In all cases Statistics NZ must be acknowledged as the source.

## **Liability**

While care has been used in processing, analysing and extracting information, Statistics NZ gives no warranty that the information supplied is free from error. Statistics NZ shall not be liable for any loss suffered through the use, directly or indirectly, of any information, product or service.

## **Timing**

Timed statistical releases are delivered using postal and electronic services provided by third parties. Delivery of these releases may be delayed by circumstances outside the control of Statistics NZ. Statistics NZ accepts no responsibility for any such delays.

## Tables

The following tables are printed with this Hot Off The Press and can also be downloaded from the Statistics New Zealand website in Excel format. If you do not have access to Excel, you may use the [Excel file viewer](#) to view, print and export the contents of the file.

1. Overseas merchandise trade, actual values
2. Overseas merchandise trade, trend values – monthly
3. Exports by destination
4. Imports by country of origin
5. Exports of main commodities
6. Imports of main commodities
7. Imports by broad economic category (BEC) group
8. Exchange rates
9. Related series, livestock, cars, crude oil and petroleum
10. Exports and imports by standard international trade classification (SITC)
11. Overseas merchandise trade, seasonally adjusted and trend values – quarterly
12. Exports by top 10 HS categories, values – seasonally adjusted
13. Exports by top 10 HS categories, quantities – seasonally adjusted
14. Imports by broad economic category (BEC) group, values – seasonally adjusted

**Overseas Merchandise Trade: September 2009**

Table 1

**Overseas Merchandise Trade**

*Actual values*<sup>(1)(2)</sup>

		Exports (including re-exports) (fob)	Change from same period of previous year	Imports (cif)	Change from same period of previous year	Trade balance (exports minus imports) (fob-cif)	Re-exports (fob)	Large import items <sup>(3)</sup> (cif)	Imports (vfd)
<i>Infoshare series</i>		<i>EXPM.SCT99F</i>		<i>IMP.M.SCT99C</i>			<i>EXPM.SRF</i>	<i>IMP.M.SIC</i>	<i>IMP.M.SCT99V</i>
		\$(million)	%	\$(million)	%		\$(million)		
<b>Year ended</b>									
September	1999	23,044	3.9	25,291	12.2	-2,246	912	954	23,636
September	2000	27,314	18.5	30,373	20.1	-3,058	1,185	1,068	28,576
September	2001	32,880	20.4	31,918	5.1	962	1,070	124	29,853
September	2002	31,682	-3.6	32,163	0.8	-481	1,223	0	30,135
September	2003	28,730	-9.3	31,944	-0.7	-3,213	1,127	0	29,950
September	2004	30,048	4.6	34,128	6.8	-4,080	1,126	101	32,038
September	2005	30,770	2.4	36,539	7.1	-5,769	1,374	0	34,129
September	2006	33,868	10.1	40,051	9.6	-6,183	1,794	1,319	37,544
September	2007	34,591	2.1	40,878	2.1	-6,287	1,486	846	38,418
September	2008	41,973	21.3	47,022	15.0	-5,048	1,618	734	44,300
September	2009 P	41,592	-0.9	43,125	-8.3	-1,533	1,960	571	40,685
<b>Three months ended</b>									
September	2008	10,180	23.6	13,076	23.8	-2,897	423	102	12,301
December	2008	11,345	8.9	13,274	12.7	-1,929	558	0	12,438
March	2009	10,666	4.4	9,848	-4.6	818	536	0	9,259
June	2009	10,837	-2.9	9,940	-16.0	897	500	571	9,439
September	2009 P	8,743	-14.1	10,063	-23.0	-1,320	366	0	9,548
<b>Month</b>									
2007	Sep	2,933	3.9	3,505	1.6	-572	162	0	3,293
	Oct	3,368	24.0	4,142	6.5	-774	208	154	3,905
	Nov	3,368	20.8	3,996	10.7	-628	127	0	3,762
	Dec	3,682	25.0	3,644	10.7	39	108	0	3,441
2008	Jan	3,083	24.1	3,394	2.6	-311	85	0	3,189
	Feb	3,699	29.9	3,456	16.2	243	110	0	3,245
	Mar	3,431	3.5	3,474	6.7	-43	128	0	3,277
	Apr	3,826	20.7	4,119	21.7	-293	125	477	3,891
	May	3,741	11.7	3,911	17.0	-169	178	0	3,687
	Jun	3,594	31.2	3,809	16.9	-215	125	0	3,600
	Jul	3,432	30.0	4,229	22.6	-797	121	0	3,987
	Aug	3,575	34.3	4,423	22.6	-848	176	102	4,177
	Sep	3,173	8.2	4,425	26.2	-1,252	125	0	4,138
	Oct	3,826	13.6	4,820	16.4	-994	134	0	4,520
	Nov	3,681	9.3	4,274	7.0	-594	134	0	3,999
	Dec	3,839	4.3	4,180	14.7	-341	289	0	3,919
2009	Jan	3,172	2.9	3,274	-3.5	-102	109	0	3,069
	Feb	3,442	-7.0	2,959	-14.4	483	138	0	2,788
	Mar	4,053	18.1	3,615	4.0	438	290	0	3,402
	Apr	3,641	-4.8	3,319	-19.4	322	159	0	3,131
	May	3,962	5.9	3,056	-21.8	906	166	0	2,891
	Jun	3,233	-10.0	3,564	-6.4	-331	175	571	3,417
	Jul P	3,174	-7.5	3,351	-20.8	-176	130	0	3,185
	Aug P	2,743	-23.3	3,463	-21.7	-719	110	0	3,286
	Sep P	2,826	-10.9	3,250	-26.6	-424	126	0	3,077

(1) Exports are valued fob (free on board – the value of goods at New Zealand ports before export) and include re-exports. Imports are valued cif (cost, including insurance and freight to New Zealand) or vfd (value for duty – the value of imports before insurance and freight costs are added).

(2) Figures are calculated on unrounded data.

(3) Individual import items with cif values of \$100 million or more (such as large aircraft and ships).

**Symbol:**

P provisional (Statistics for the latest three months are provisional.)

**Overseas Merchandise Trade: September 2009**

Table 2

**Overseas Merchandise Trade**

*Trend values – monthly*<sup>(1)(2)(3)(4)</sup>

	Exports (including re-exports) (fob)	Change from previous month	Imports (cif) <sup>(5)</sup>	Change from previous month	Trade balance (exports minus imports) (fob-cif) <sup>(5)</sup>	Imports (vfd) <sup>(5)</sup>
<i>Infoshare series</i>	<i>OTTM.STEF</i>		<i>OTTM.STIC</i>		<i>OTTM.STMC</i>	<i>OTTM.STIV</i>
	\$(million)	%	\$(million)	%	\$(million)	
<b>Month</b>						
2006 Sep	2,928	-0.1	3,325	-0.6	-397	3,107
Oct	2,916	-0.4	3,310	-0.4	-394	3,096
Nov	2,898	-0.6	3,311	0.0	-412	3,101
Dec	2,878	-0.7	3,324	0.4	-446	3,119
2007 Jan	2,861	-0.6	3,341	0.5	-480	3,138
Feb	2,851	-0.3	3,358	0.5	-507	3,156
Mar	2,852	0.0	3,363	0.1	-511	3,161
Apr	2,866	0.5	3,357	-0.2	-491	3,154
May	2,896	1.0	3,348	-0.3	-452	3,144
Jun	2,942	1.6	3,345	-0.1	-404	3,139
Jul	2,999	1.9	3,360	0.4	-362	3,154
Aug	3,064	2.2	3,393	1.0	-329	3,187
Sep	3,134	2.3	3,441	1.4	-307	3,237
Oct	3,207	2.3	3,502	1.8	-296	3,298
Nov	3,277	2.2	3,564	1.8	-287	3,360
Dec	3,341	1.9	3,619	1.5	-278	3,413
2008 Jan	3,395	1.6	3,676	1.6	-281	3,466
Feb	3,439	1.3	3,736	1.6	-297	3,522
Mar	3,475	1.0	3,805	1.8	-329	3,586
Apr	3,505	0.9	3,884	2.1	-379	3,659
May	3,532	0.8	3,968	2.2	-435	3,737
Jun	3,560	0.8	4,051	2.1	-491	3,814
Jul	3,588	0.8	4,123	1.8	-536	3,878
Aug	3,613	0.7	4,164	1.0	-551	3,912
Sep	3,633	0.5	4,160	-0.1	-528	3,905
Oct	3,642	0.3	4,107	-1.3	-465	3,852
Nov	3,641	0.0	4,014	-2.3	-373	3,765
Dec	3,627	-0.4	3,899	-2.9	-272	3,658
2009 Jan	3,600	-0.8	3,767	-3.4	-167	3,539
Feb	3,560	-1.1	3,631	-3.6	-71	3,416
Mar	3,511	-1.4	3,509	-3.4	2	3,306
Apr	3,454	-1.6	3,399	-3.1	55	3,208
May	3,392	-1.8	3,303	-2.8	89	3,123
Jun	3,328	-1.9	3,222	-2.5	106	3,050
Jul	3,266	-1.9	3,159	-2.0	107	2,993
Aug	3,211	-1.7	3,120	-1.2	91	2,958
Sep	3,166	-1.4	3,106	-0.5	60	2,946

(1) Exports are valued fob (free on board – the value of goods at New Zealand ports before export) and include re-exports. Imports are valued cif (cost, including insurance and freight to New Zealand) or vfd (value for duty – the value of imports before insurance and freight costs are added).

(2) Trend values exclude estimated seasonal fluctuations and short-term irregular movements.

(3) Trend values, particularly for the latest periods, are subject to revision each month.

(4) Figures are calculated on unrounded data.

(5) Excludes individual import items with cif values of \$100 million or more (such as large aircraft and ships).

**Overseas Merchandise Trade: September 2009**

Table 3

**Exports by Destination<sup>(1)(2)</sup>**

Destination			Month of September			Three months ended September			12 months ended September		
Rank	Code <sup>(3)</sup>	Name	2008	2009 P	%	2008	2009 P	%	2008	2009 P	%
			\$(million)		change	\$(million)		change	\$(million)		change
<b>Country groups</b>											
96	Asia		1,086	1,028	-5.3	3,416	3,226	-5.6	14,316	14,908	4.1
95	Europe		435	356	-18.3	1,523	1,209	-20.6	6,326	6,037	-4.6
06	OECD		1,966	1,747	-11.2	6,600	5,327	-19.3	26,017	24,864	-4.4
01	APEC		2,200	2,042	-7.2	7,207	6,220	-13.7	28,883	28,709	-0.6
05	EU		401	338	-15.7	1,398	1,145	-18.1	5,840	5,689	-2.6
02	ASEAN		289	274	-5.3	944	866	-8.3	4,755	4,141	-12.9
<b>Top 20 countries</b>											
1	AU	Australia	857	831	-3.1	2,783	2,320	-16.6	9,888	9,254	-6.4
2	US	United States of America	297	195	-34.6	1,015	668	-34.1	4,108	4,461	8.6
3	CN	People's Republic of China	203	236	16.1	587	755	28.7	2,238	3,528	57.7
4	JP	Japan	253	206	-18.4	871	698	-19.8	3,454	3,201	-7.3
5	GB	United Kingdom	102	98	-3.7	369	337	-8.7	1,611	1,725	7.1
6	KR	Republic of Korea	91	111	22.0	303	293	-3.5	1,406	1,271	-9.6
7	ID	Indonesia	53	53	-0.3	225	179	-20.8	1,023	1,018	-0.5
8	SG	Singapore	46	81	76.6	161	236	46.1	912	865	-5.2
9	HK	Hong Kong (SAR)	67	58	-13.6	201	193	-4.0	660	815	23.5
10	DE	Germany	52	50	-4.3	208	152	-26.6	889	805	-9.4
11	MY	Malaysia	62	46	-25.4	185	170	-7.7	915	782	-14.6
12	TW	Taiwan	51	49	-4.4	197	165	-16.5	759	736	-3.1
13	IN	India	85	56	-33.8	184	137	-25.3	458	681	48.7
14	PH	Philippines	55	37	-33.4	164	117	-28.6	743	624	-16.0
15	SA	Saudi Arabia	37	23	-38.5	123	91	-26.4	728	550	-24.5
16	FR	France	37	29	-22.2	116	106	-8.9	474	544	14.6
17	TH	Thailand	43	34	-20.3	135	98	-27.9	811	535	-34.0
18	CA	Canada	35	37	7.0	97	113	16.3	529	531	0.5
19	BE	Belgium	28	28	0.3	98	80	-18.1	564	508	-9.8
20	NL	Netherlands	34	26	-21.5	112	76	-32.1	500	488	-2.3
<b>Summary</b>											
-	Top 20 countries		2,489	2,285	-8.2	8,135	6,984	-14.1	32,670	32,921	0.8
-	Destination unknown – EU		44	26	-42.2	140	127	-9.6	351	350	-0.4
-	Other countries		605	486	-19.7	1,791	1,542	-13.9	8,544	7,954	-6.9
-	<b>ALL COUNTRIES</b>		<b>3,138</b>	<b>2,797</b>	<b>-10.9</b>	<b>10,066</b>	<b>8,654</b>	<b>-14.0</b>	<b>41,565</b>	<b>41,225</b>	<b>-0.8</b>
-	Bunkering, passengers' baggage and ships' stores		35	29	-15.3	114	90	-21.0	409	367	-10.1
99	<b>All merchandise exports</b>		<b>3,173</b>	<b>2,826</b>	<b>-10.9</b>	<b>10,180</b>	<b>8,743</b>	<b>-14.1</b>	<b>41,973</b>	<b>41,592</b>	<b>-0.9</b>

(1) Exports are valued fob (free on board – the value of goods at New Zealand ports before export) and include re-exports.

(2) Figures are calculated on unrounded data.

(3) These codes are used in Infoshare series EXPM.SCT&&F (at position '&&').

OECD – Organisation for Economic Co-operation and Development.

APEC – Asia-Pacific Economic Cooperation countries.

EU – European Union (includes two new member countries from 1 January 2007).

ASEAN – Association of Southeast Asian Nations.

SAR – Special Administrative Region.

**Symbols:**

P provisional (Statistics for the latest three months are provisional.)

- no code available

**Overseas Merchandise Trade: September 2009**

Table 4

**Imports by Country of Origin<sup>(1)(2)</sup>**

Origin			Month of September			Three months ended September			12 months ended September		
Rank	Code <sup>(3)</sup>	Name	2008	2009 P	%	2008	2009 P	%	2008	2009 P	%
			\$(million)			\$(million)			\$(million)		
			change			change			change		
<b>Country groups</b>											
96		Asia	1,992	1,350	-32.2	5,464	4,184	-23.4	20,486	18,243	-10.9
95		Europe	696	518	-25.6	2,056	1,697	-17.5	7,807	8,147	4.4
06		OECD	2,482	1,885	-24.0	7,417	6,052	-18.4	27,328	25,908	-5.2
01		APEC	3,276	2,387	-27.1	9,361	7,498	-19.9	34,446	31,361	-9.0
05		EU	665	485	-27.1	1,963	1,568	-20.1	7,363	7,514	2.1
02		ASEAN	672	408	-39.3	1,790	1,372	-23.4	7,450	5,795	-22.2
<b>Top 25 countries</b>											
1	AU	Australia	807	675	-16.4	2,432	2,047	-15.8	8,776	7,721	-12.0
2	CN	People's Republic of China	661	546	-17.5	1,779	1,531	-13.9	6,095	6,411	5.2
3	US	United States of America	365	316	-13.4	1,261	1,116	-11.5	4,470	4,502	0.7
4	JP	Japan	389	177	-54.5	1,037	601	-42.0	4,115	3,185	-22.6
5	DE	Germany	185	127	-31.0	535	392	-26.6	2,007	1,841	-8.3
6	SG	Singapore	161	141	-12.4	445	395	-11.2	2,305	1,811	-21.4
7	KR	Republic of Korea	136	118	-13.2	383	384	0.4	1,214	1,485	22.3
8	FR	France	72	53	-27.0	204	214	4.9	752	1,403	86.5
9	MY	Malaysia	114	68	-40.8	429	290	-32.4	1,929	1,198	-37.9
10	QA	Qatar	131	129	-1.5	462	309	-33.0	1,181	1,195	1.2
11	TH	Thailand	118	95	-19.5	346	271	-21.8	1,306	1,106	-15.3
12	GB	United Kingdom	93	82	-11.6	288	271	-6.1	1,071	988	-7.8
13	ID	Indonesia	256	45	-82.4	489	190	-61.1	1,147	828	-27.8
14	IT	Italy	91	60	-34.0	266	172	-35.5	1,001	802	-19.9
15	TW	Taiwan	69	48	-30.7	301	142	-52.9	987	713	-27.8
16	CA	Canada	58	52	-10.6	148	127	-14.1	647	683	5.6
17	BN	Brunei Darussalam	0	33	...	0	150	...	395	536	35.7
18	DK	Denmark	16	17	6.1	61	48	-20.9	238	450	88.8
19	NL	Netherlands	35	32	-7.7	119	95	-19.8	384	370	-3.8
20	CH	Switzerland	24	28	15.7	74	86	17.0	337	351	4.1
21	IN	India	33	30	-11.1	84	82	-2.1	300	340	13.2
22	AE	United Arab Emirates	34	50	48.2	378	66	-82.5	1,013	318	-68.6
23	BE	Belgium	30	21	-32.4	91	72	-20.8	317	295	-6.8
24	SA	Saudi Arabia	46	6	-88.0	205	47	-76.9	536	277	-48.3
25	MA	Morocco	116	12	-89.8	172	40	-77.0	400	272	-32.1
<b>Summary</b>											
-		Top 25 countries	4,041	2,960	-26.8	11,988	9,140	-23.8	42,927	39,079	-9.0
-		Other countries	384	290	-24.4	1,088	923	-15.1	4,095	4,046	-1.2
99		<b>All merchandise imports</b>	<b>4,425</b>	<b>3,250</b>	<b>-26.6</b>	<b>13,076</b>	<b>10,063</b>	<b>-23.0</b>	<b>47,022</b>	<b>43,125</b>	<b>-8.3</b>

(1) Imports are valued cif (cost, including insurance and freight to New Zealand).

(2) Figures are calculated on unrounded data.

(3) These codes are used in Infoshare series IMPM.SCT&&C (at position '&&').

OECD – Organisation for Economic Co-operation and Development.

APEC – Asia-Pacific Economic Cooperation countries.

EU – European Union (includes two new member countries from 1 January 2007).

ASEAN – Association of Southeast Asian Nations.

**Symbols:**

P provisional (Statistics for the latest three months are provisional.)

- no code available

... not applicable

Overseas Merchandise Trade: September 2009

Table 5

Exports of Main Commodities<sup>(1)(2)</sup>

HS code (3)	Commodity	Month of September			Three months ended September			12 months ended September		
		2008	2009 P	%	2008	2009 P	%	2008	2009 P	%
		\$(million)		change	\$(million)		change	\$(million)		change
0401-0406	Milk powder, butter and cheese	529	434	-18.0	1,574	1,350	-14.2	9,128	8,746	-4.2
02	Meat and edible offal	273	245	-10.6	1,096	892	-18.6	4,914	5,322	8.3
44	Logs, wood and wood articles	194	216	11.4	597	631	5.8	2,049	2,365	15.4
84	Mechanical machinery and equipment	172	129	-24.9	494	399	-19.2	1,873	1,747	-6.7
2709	Crude oil	156	216	38.4	820	584	-28.8	3,022	1,727	-42.9
0803-0814	Fruit	123	107	-13.7	437	435	-0.3	1,458	1,610	10.4
03	Fish, crustaceans and molluscs	112	115	2.3	320	319	-0.2	1,158	1,301	12.4
3501	Casein and caseinates	66	42	-35.5	155	137	-11.6	907	1,037	14.3
85	Electrical machinery and equipment	94	78	-16.7	290	244	-15.8	1,049	1,019	-2.9
2204	Wine	102	96	-5.7	259	272	5.0	835	1,003	20.1
19	Preparations of cereals, flour and starch	73	57	-21.7	215	203	-5.5	759	986	29.9
76	Aluminium and aluminium articles	135	89	-34.3	365	243	-33.4	1,448	980	-32.4
72-73	Iron and steel and articles <sup>(4)</sup>	96	59	-38.1	286	194	-32.2	1,033	884	-14.5
71	Precious metals, jewellery and coins	57	64	12.4	170	171	0.3	588	765	30.1
90	Optical, medical and measuring equipment	53	55	3.0	165	171	3.9	563	703	25.0
21	Miscellaneous edible preparations	38	34	-11.4	130	122	-6.3	614	647	5.5
47	Wood pulp and waste paper	48	59	24.1	176	162	-8.1	662	613	-7.4
50-63 <sup>(5)</sup>	Textiles and textile articles <sup>(4)</sup>	60	52	-12.6	179	153	-14.5	691	586	-15.2
48	Paper and paperboard and articles <sup>(4)</sup>	49	43	-12.9	148	138	-6.7	541	551	1.9
5101	Wool	40	36	-7.9	128	108	-15.1	613	551	-10.2
88	Aircraft and parts	15	11	-23.2	42	27	-33.9	251	467	86.1
39	Plastic and plastic articles	37	35	-4.9	118	105	-11.4	450	446	-0.9
07	Vegetables <sup>(4)</sup>	17	18	7.2	55	54	-2.1	419	416	-0.8
41	Raw hides, skins and leather <sup>(4)</sup>	46	22	-52.2	135	80	-40.5	512	397	-22.5
05	Other animal originated products	18	16	-11.1	61	52	-14.8	300	366	22.0
23	Food residues, wastes and fodder	18	21	20.3	62	64	2.3	260	319	22.7
87	Vehicles, parts and accessories	26	22	-16.8	77	66	-14.5	285	312	9.4
30	Pharmaceutical products	25	25	1.8	81	71	-12.2	275	286	4.3
3502-3507	Albumins, gelatin, glues and enzymes	10	13	30.0	33	38	15.9	213	253	18.8
16	Meat and fish preparations	20	22	9.8	56	61	9.4	215	252	17.3
20	Preparations of vegetables, fruit and nuts	20	27	34.7	65	74	13.2	216	252	16.9
89	Ships, boats and floating structures	5	10	111.4	103	45	-56.7	356	237	-33.4
94	Furniture, furnishings and light fittings	14	13	-3.3	44	45	2.0	185	192	4.0
22 <sup>(6)</sup>	Beverages, spirits and vinegar <sup>(4)</sup>	18	21	13.5	48	52	9.3	174	179	2.6
01	Live animals	14	4	-70.2	34	37	10.9	184	169	-8.6
2710-2715	Petroleum and products other than crude oil	31	23	-25.2	85	64	-24.9	176	166	-5.4
15	Animal or vegetable fats and oils <sup>(4)</sup>	10	7	-31.3	53	30	-43.8	207	154	-25.5
12	Seeds, raw peanuts and soya flour <sup>(4)</sup>	9	7	-15.5	33	30	-9.3	140	154	9.9
17	Sugars and sugar confectionery	13	11	-10.4	37	40	7.6	151	153	0.9
38	Other chemical products <sup>(4)</sup>	13	14	2.0	40	37	-7.1	144	147	2.0
-	Other commodities <sup>(4)</sup>	183	169	-7.5	557	497	-10.8	2,183	1,992	-8.8
9809	Confidential data <sup>(7)</sup>	144	88	...	357	244	...	773	1,142	...
<b>01-98</b>	<b>All merchandise exports</b>	<b>3,173</b>	<b>2,826</b>	<b>-10.9</b>	<b>10,180</b>	<b>8,743</b>	<b>-14.1</b>	<b>41,973</b>	<b>41,592</b>	<b>-0.9</b>

(1) Exports are valued fob (free on board – the value of goods at New Zealand ports before export) and include re-exports.

(2) Figures are calculated on unrounded data.

(3) These codes are used in Infoshare series EXPM.S2T&&F (at position '&&'). Exceptions are:

0401-0406=EXPM.S2U04AF, 0803-0814=EXPM.S2U08AF, 22<sup>(6)</sup>=EXPM.S2U22BF, 2204=EXPM.S2U22AF, 2709=EXPM.S2U27CF, 2710-2715=EXPM.S2U27DF, 3501=EXPM.S2U35AF, 3502-3507=EXPM.S2U35BF, 5101=EXPM.S2U51AF, 50-63<sup>(5)</sup>=EXPM.S2O50TO63F, 72-73=EXPM.S2O72TO73F, 9809=EXPM.S2U98CF and 01-98=EXPM.S2TZZF.

(4) Export values exclude confidential data. (This may affect percentage changes.)

(5) Excludes wool (HS code 5101).

(6) Excludes wine (HS code 2204).

(7) Data that is no longer confidential is assigned to specific commodities.

HS – New Zealand Harmonised System Classification. (HS2007 applies to January 2007 and later data. HS2002 is used for earlier data.)

**Symbols:**

P provisional (Statistics for the latest three months are provisional.)

... not applicable

- not available

Overseas Merchandise Trade: September 2009

Table 6

Imports of Main Commodities<sup>(1)(2)</sup>

HS code (3)	Commodity	Month of September			Three months ended September			12 months ended September		
		2008	2009 P	%	2008	2009 P	%	2008	2009 P	%
		\$(million)		change	\$(million)		change	\$(million)		change
2709-2715	Petroleum and products <sup>(4)</sup>	705	463	-34.3	2,480	1,529	-38.4	8,098	6,307	-22.1
84	Mechanical machinery and equipment	503	368	-26.9	1,501	1,243	-17.2	6,030	5,512	-8.6
85	Electrical machinery and equipment <sup>(5)</sup>	356	341	-4.2	1,030	920	-10.7	3,873	4,216	8.9
87	Vehicles, parts and accessories	405	232	-42.5	1,320	777	-41.1	5,315	3,416	-35.7
50-63	Textiles and textile articles	183	165	-9.8	532	489	-8.0	1,930	2,001	3.7
39	Plastic and plastic articles	176	138	-21.8	480	392	-18.4	1,667	1,581	-5.2
90	Optical, medical and measuring equipment	122	109	-10.5	342	359	5.0	1,240	1,421	14.6
88	Aircraft and parts	52	42	-18.3	287	306	6.6	986	1,401	42.0
72-73	Iron and steel and articles <sup>(5)</sup>	181	88	-51.3	473	258	-45.5	1,608	1,384	-13.9
30	Pharmaceutical products	104	96	-7.1	303	294	-2.9	1,088	1,176	8.1
48	Paper and paperboard and articles	94	80	-15.5	266	238	-10.5	1,023	1,001	-2.1
31	Fertilizers	174	52	-70.0	293	110	-62.4	655	643	-1.8
94	Furniture, furnishings and light fittings	68	54	-20.3	178	151	-15.2	629	584	-7.3
21	Miscellaneous edible preparations	49	44	-9.3	128	127	-0.7	493	540	9.5
40	Rubber and rubber articles	47	41	-12.8	137	122	-10.8	515	528	2.5
38	Other chemical products	53	44	-17.1	149	136	-8.7	477	516	8.1
95	Toys, games and sports requisites	57	54	-5.7	133	127	-4.7	450	482	7.1
28	Inorganic chemicals <sup>(5)</sup>	70	42	-39.8	181	104	-42.7	593	468	-21.1
23	Food residues, wastes and fodder	63	19	-70.1	189	89	-52.7	575	463	-19.5
33	Essential oils, perfumes and toiletries	41	45	8.9	107	118	11.0	416	445	7.0
22	Beverages, spirits and vinegar	39	35	-10.4	112	98	-12.7	457	439	-3.9
49	Books, newspapers and printed matter	41	38	-6.4	115	105	-8.1	438	426	-2.7
25	Salt, earths, stone, lime and cement	115	18	-84.3	224	62	-72.5	552	408	-26.0
19	Preparations of cereals, flour and starch	31	34	8.1	89	98	10.2	317	366	15.7
29	Organic chemicals <sup>(5)</sup>	32	28	-14.4	106	79	-25.4	370	349	-5.7
08	Fruit and nuts	29	29	1.2	85	83	-2.4	296	336	13.4
70	Glass and glassware	33	29	-11.4	93	78	-15.7	322	333	3.4
64	Footwear	28	27	-4.4	81	81	-0.0	282	322	14.3
20	Preparations of vegetables, fruit and nuts	24	26	9.1	74	72	-1.9	299	305	2.0
71	Precious metals, jewellery and coins	24	25	6.4	62	70	12.7	256	301	17.4
32	Tanning extracts, dyes, paints and putty	27	23	-12.9	76	75	-1.6	306	298	-2.4
10	Cereals	37	21	-43.6	98	73	-25.7	291	293	0.4
15	Animal and vegetable fats and oils	24	14	-39.7	89	65	-26.1	275	282	2.7
76	Aluminium and aluminium articles <sup>(5)</sup>	25	23	-7.9	82	62	-24.0	366	282	-23.1
17	Sugars and sugar confectionery <sup>(5)</sup>	23	31	31.8	54	70	28.9	246	248	0.8
34	Soap and organic surface-active agents <sup>(5)</sup>	21	19	-9.3	63	58	-8.7	226	243	7.6
18	Cocoa and cocoa preparations	26	25	-3.8	64	70	10.0	188	240	27.3
02	Meat and edible offal	18	15	-18.6	45	42	-7.2	156	192	22.9
44	Logs, wood and wood articles	17	12	-28.1	44	35	-19.8	200	190	-5.4
82	Metal tools, implements and cutlery	17	18	11.4	53	48	-9.3	210	188	-10.2
-	Other commodities <sup>(5)</sup>	262	219	-16.3	759	677	-10.9	3,099	2,688	-13.3
9809	Confidential data <sup>(6)</sup>	31	23	...	99	72	...	207	311	...
<b>01-98</b>	<b>All merchandise imports</b>	<b>4,425</b>	<b>3,250</b>	<b>-26.6</b>	<b>13,076</b>	<b>10,063</b>	<b>-23.0</b>	<b>47,022</b>	<b>43,125</b>	<b>-8.3</b>

(1) Imports are valued cif (cost, including insurance and freight to New Zealand).

(2) Figures are calculated on unrounded data.

(3) These codes are used in Infoshare series IMPM.S2T&&C (at position '&&'). Exceptions are:

2709-2715=IMPM.S2U27BC, 50-63=IMPM.S2O50TO63C, 72-73=IMPM.S2O72TO73F, 9809=IMPM.S2U98CC and 01-98=IMPM.S2TZCC.

(4) For the latest month, values for crude oil and some other petroleum products are calculated from estimated prices.

(5) Import values exclude confidential data. (This may affect percentage changes.)

(6) Data that is no longer confidential is assigned to specific commodities.

HS – New Zealand Harmonised System Classification. (HS2007 applies to January 2007 and later data. HS2002 is used for earlier data.)

**Symbols:**

P provisional (Statistics for the latest three months are provisional.)

... not applicable - not available

**Overseas Merchandise Trade: September 2009**

Table 7

**Imports by Broad Economic Category (BEC) Group<sup>(1)(2)(3)</sup>**

	Capital goods <sup>(4)</sup>		Intermediate goods <sup>(5)</sup>			Consumption goods <sup>(7)</sup>	Other categories			All merchandise imports <sup>(10)</sup>	
	Machinery and plant	Transport equipment	Crude oil <sup>(6)</sup>	Other	Total		Passenger motor cars	Petrol and avgas <sup>(6)</sup>	Military and other goods <sup>(8)(9)</sup>		
<i>BEC codes</i>	41	521	313	111, 121, 2, 311, 312, 314, 322, 42,	111, 121, 2, 31, 322, 42, 53	112, 122, 522, 6	51	321	7	1-7	
<i>InfoShare series BECM.</i>	<i>SIA410</i>	<i>SIA521</i>	<i>SID313</i>	<i>SIG990</i>	<i>SIG999</i>	<i>SIK999</i>	<i>SIL510</i>	<i>SIM321</i>	<i>SIN700</i>	<i>SIT999</i>	
	\$(million)										
<b>Year ended</b>											
September 2005	5,595	1,865	2,235	13,560	15,795	8,953	3,460	740	132	36,539	
September 2006	5,626	2,879	3,194	14,276	17,470	9,689	2,987	1,193	207	40,051	
September 2007	6,182	1,815	2,850	15,274	18,124	10,211	3,138	1,055	349	40,874	
September 2008	7,189	2,072	4,295	17,795	22,090	10,863	3,155	1,365	281	47,015	
September 2009 P	6,488	1,644	3,206 E	17,146	20,353	11,296	1,877	1,125	337	43,119	
Latest annual change <sup>(9)</sup>	-9.8%	-20.6%	-25.3%	-3.6%	-7.9%	4.0%	-40.5%	-17.6%	20.1%	-8.3%	
<b>Three months ended</b>											
September 2008	1,741	501	1,450	5,168	6,618	2,995	780	318	123	13,076	
December 2008	1,972	394	1,197	5,470	6,667	3,210	597	306	128	13,273	
March 2009	1,549	245	559	4,159	4,718	2,655	328	278	72	9,846	
June 2009	1,589	774	611	3,579	4,190	2,604	442	280	59	9,937	
September 2009 P	1,378	231	839 E	3,938	4,777	2,827	510	261	79	10,063	
Latest annual change <sup>(9)</sup>	-20.9%	-53.8%	-42.1%	-23.8%	-27.8%	-5.6%	-34.6%	-18.0%	-36.1%	-23.0%	
<b>Month</b>											
2007	Sep	536	126	251	1,310	1,561	955	227	87	12	3,505
	Oct	719	253	248	1,475	1,724	1,064	272	90	20	4,142
	Nov	620	229	166	1,459	1,625	1,042	328	119	32	3,996
	Dec	547	146	377	1,305	1,683	855	271	132	9	3,643
2008	Jan	524	129	273	1,333	1,606	788	218	119	10	3,394
	Feb	469	143	378	1,274	1,651	843	253	73	23	3,456
	Mar	516	130	412	1,280	1,692	747	274	102	12	3,474
	Apr	1,013	110	291	1,498	1,789	858	219	112	16	4,118
	May	507	258	328	1,496	1,824	864	295	147	15	3,909
	Jun	533	172	372	1,506	1,878	807	245	153	20	3,808
	Jul	583	126	431	1,706	2,137	968	286	97	31	4,229
	Aug	567	258	636	1,566	2,202	949	265	122	59	4,422
	Sep	590	117	383	1,896	2,279	1,078	229	100	32	4,425
	Oct	651	169	518	1,958	2,476	1,142	220	118	43	4,819
	Nov	653	115	349	1,835	2,184	1,044	158	74	47	4,274
	Dec	669	110	330	1,677	2,007	1,024	218	114	37	4,180
2009	Jan	526	85	263	1,312	1,574	834	112	111	33	3,274
	Feb	469	107	103	1,252	1,354	861	95	56	17	2,959
	Mar	555	53	194	1,595	1,789	961	121	111	23	3,612
	Apr	483	46	275	1,282	1,556	898	152	162	21	3,318
	May	531	82	179	1,161	1,340	860	141	82	20	3,056
	Jun	574	646	157	1,137	1,294	846	149	36	18	3,564
	Jul P	457	120	351	1,252	1,602	893	162	91	25	3,351
	Aug P	458	75	271	1,407	1,678	945	195	83	29	3,463
	Sep P	463	36	218 E	1,279	1,497	989	153	87	25	3,250
Latest annual change <sup>(11)</sup>		-21.5%	-69.2%	-43.1%	-32.5%	-34.3%	-8.3%	-33.0%	-12.2%	-22.9%	-26.6%

(1) Imports are valued cif (cost, including insurance and freight to New Zealand).

(2) Figures are calculated on unrounded data.

(3) Some section values exclude confidential data. (This may affect percentage changes.)

(4) Excludes passenger motor cars. (There is a separate series for these because industry and household purchases cannot be split.)

(5) Excludes petrol and avgas. (There is a separate series for these because industry and household purchases cannot be split.)

(6) For the latest month, values for crude oil and some other petroleum products are calculated from estimated prices.

(7) Excludes passenger motor cars, petrol and avgas, and military equipment.

(8) Military equipment (including frigates), confidential, miscellaneous and unclassified goods. Military helicopters are in capital transport equipment.

(9) Data that is no longer confidential is assigned to specific BEC groups.

(10) Totals may not match merchandise trade totals as some commodities (eg monetary gold) are excluded from BEC.

(11) The change from the same period of the previous year.

**Symbols:**

P provisional (Statistics for the latest three months are provisional.)

E estimated

**Overseas Merchandise Trade: September 2009**

Table 8

**Exchange Rates**

	Reserve Bank exchange rates						NZCS exchange rates					
	Mid-rates for NZ\$1.00					Trade Weighted Index <sup>(1)</sup>	Change from		Trade Weighted Index <sup>(3)</sup>	Change from		
	USA NZ\$:US\$	UK NZ\$:£	Australia NZ\$:A\$	Japan NZ\$:yen	Europe NZ\$:euro		preceding	same period		preceding	same period	
							period	of previous		period	of previous	
					(2)	year <sup>(2)</sup>	(2)	year <sup>(2)</sup>				
							%	%			%	%
<b>Three months ended</b>												
2006	Sep	0.6348	0.3387	0.8389	73.79	0.4981	63.6	1.2	-8.8	920	-0.1	-10.5
	Dec	0.6737	0.3516	0.8747	79.28	0.5223	67.1	5.5	-6.2	966	5.0	-7.8
2007	Mar	0.7203	0.3671	0.8835	83.52	0.5300	68.8	2.6	0.7	992	2.7	-2.2
	Jun	0.7851	0.3957	0.8794	86.38	0.5404	72.0	4.7	14.6	1024	3.2	11.1
	Sep	0.7438	0.3680	0.8774	87.74	0.5413	71.3	-1.0	12.1	1041	1.7	13.1
	Dec	0.7639	0.3735	0.8591	86.37	0.5274	71.0	-0.4	5.9	1015	-2.4	5.0
2008	Mar	0.7904	0.3995	0.8720	83.22	0.5274	71.9	1.3	4.5	1032	1.7	4.0
	Jun	0.7759	0.3937	0.8228	81.09	0.4964	69.2	-3.7	-3.9	1013	-1.9	-1.1
	Sep	0.7134	0.3767	0.8034	76.76	0.4740	65.5	-5.4	-8.1	954	-5.8	-8.4
	Dec	0.5786	0.3675	0.8576	55.88	0.4392	57.8	-11.8	-18.7	871	-8.7	-14.2
2009	Mar	0.5328	0.3710	0.8024	49.82	0.4083	53.7	-7.0	-25.4	800	-8.1	-22.5
	Jun	0.6024	0.3889	0.7938	58.66	0.4422	58.4	8.7	-15.7	836	4.5	-17.4
	Sep	0.6738	0.4106	0.8089	63.08	0.4712	62.6	7.2	-4.5	905	8.2	-5.1
<b>Month</b>												
2007	Sep	0.7171	0.3554	0.8492	82.48	0.5162	68.3	-2.6	4.1	988	-6.5	4.9
	Oct	0.7606	0.3722	0.8464	88.17	0.5348	71.2	4.2	6.9	1009	2.1	5.2
	Nov	0.7624	0.3681	0.8499	84.69	0.5197	70.3	-1.4	5.5	1018	0.9	5.0
	Dec	0.7686	0.3801	0.8811	86.26	0.5276	71.6	1.9	5.2	1019	0.1	5.0
2008	Jan	0.7718	0.3921	0.8758	83.17	0.5244	71.2	-0.5	3.1	1020	0.1	3.0
	Feb	0.7968	0.4057	0.8733	85.43	0.5402	73.0	2.4	6.0	1030	1.0	3.9
	Mar	0.8027	0.4007	0.8669	81.06	0.5176	71.6	-1.9	4.4	1047	1.6	5.2
	Apr	0.7900	0.3989	0.8500	80.94	0.5012	70.3	-1.8	-1.3	1029	-1.7	2.4
	May	0.7769	0.3951	0.8188	81.00	0.4992	69.3	-1.4	-2.7	1014	-1.5	-2.0
	Jun	0.7607	0.3870	0.7997	81.32	0.4888	68.1	-1.7	-7.5	995	-1.9	-3.6
	Jul	0.7553	0.3798	0.7848	80.66	0.4791	67.2	-1.4	-10.9	973	-2.2	-9.7
	Aug	0.7102	0.3753	0.8031	77.62	0.4739	65.5	-2.5	-6.6	954	-1.9	-9.8
	Sep	0.6748	0.3749	0.8224	71.99	0.4689	63.8	-2.6	-6.6	934	-2.0	-5.4
	Oct	0.6137	0.3604	0.8809	61.99	0.4587	60.7	-4.8	-14.7	909	-2.7	-9.9
	Nov	0.5651	0.3686	0.8600	54.80	0.4442	57.4	-5.5	-18.3	882	-3.0	-13.3
	Dec	0.5569	0.3735	0.8320	50.85	0.4146	55.1	-4.0	-23.0	820	-7.1	-19.5
2009	Jan	0.5526	0.3815	0.8154	49.96	0.4160	54.9	-0.4	-22.9	834	1.7	-18.2
	Feb	0.5151	0.3576	0.7938	47.64	0.4022	52.3	-4.7	-28.3	792	-5.1	-23.2
	Mar	0.5308	0.3739	0.7979	51.85	0.4067	53.8	2.9	-24.8	775	-2.1	-26.0
	Apr	0.5709	0.3882	0.8006	56.42	0.4323	56.9	5.6	-19.1	824	6.3	-19.9
	May	0.5989	0.3891	0.7855	57.92	0.4394	58.0	1.9	-16.4	828	0.5	-18.3
	Jun	0.6374	0.3894	0.7953	61.63	0.4550	60.3	4.1	-11.4	857	3.4	-13.9
	Jul	0.6437	0.3932	0.8011	60.82	0.4573	60.6	0.5	-9.8	883	3.1	-9.2
	Aug	0.6754	0.4082	0.8089	64.14	0.4736	62.9	3.7	-4.1	904	2.4	-5.2
	Sep	0.7024	0.4304	0.8166	64.29	0.4827	64.3	2.3	0.8	928	2.6	-0.7

(1) Base: June 1979 (=100). For further information, refer: <http://www.rbnz.govt.nz/news/1999/0085359.html>.

(2) Figures are calculated on unrounded data.

(3) Base: June 1997 (=1000). Calculated by Statistics New Zealand from exchange rates published by the NZCS.

NZCS – New Zealand Customs Service

Overseas Merchandise Trade: September 2009

Table 9

**Related Series**  
*Livestock, cars, and crude oil*

Infoshare series	Exports-related series			Imports-related series				
	Livestock slaughtered for export <sup>(1)</sup>			Number of cars and station wagons newly registered <sup>(2)</sup>		Crude oil (HS code 2709)		
	Cattle	Lambs	Sheep			Quantity tonnes (000)	Price (cif) <sup>(3)(4)</sup> \$/tonne	Change from preceding period <sup>(5)</sup>
	Number (000)			Total	Used			
	LSSM. SAZNEC9	LSSM. SAZNES7	LSSM. SAZNES9	TPTM. S22IZ	TPTM. S22JZ	IMPM. SH1CW	BECM. SIX313	%
<b>Three months ended</b>								
2006 Sep	1,520	2,990	3,555	49,010	28,866	1,057	884.24	8.5
Dec	654	6,297	7,454	47,827	28,282	963	697.61	-21.1
2007 Mar	660	10,490	12,535	48,714	29,338	941	663.99	-4.8
Jun	725	7,191	8,250	47,966	30,337	1,094	684.50	3.1
Sep	1,467	2,710	3,258	51,958	31,699	1,036	776.71	13.5
Dec	595	6,268	7,662	49,198	29,008	906	873.63	12.5
2008 Mar	685	10,135	12,477	47,010	26,928	1,153	921.63	5.5
Jun	825	7,758	9,718	41,628	23,697	870	1,138.22	23.5
Sep	1,617	2,667	3,289	39,141	21,356	998	1,452.36	27.6
Dec	669 P	6,181 P	7,691 P	36,459	18,860	1,197	999.53	-31.2
2009 Mar	691 P	8,053 P	9,817 P	29,157	15,185	877	637.69	-36.2
Jun	843 P	6,037 P	6,452 P	27,186	15,376	933	654.38	2.6
Sep	1,516 P	2,151 P	2,478 P	32,436	17,953	1,067 P	786.67 E	20.2
<b>Month</b>								
2007 Sep	417	836	925	16,388	9,311	354	709.50	-12.6
Oct	222	1,424	1,567	17,583	9,679	305	814.76	14.8
Nov	190	2,363	2,942	16,491	9,768	198	837.15	2.7
Dec	183	2,481	3,152	15,124	9,561	403	936.08	11.8
2008 Jan	230	3,550	4,359	16,877	9,334	297	920.76	-1.6
Feb	248	3,535	4,361	15,201	9,026	408	926.07	0.6
Mar	207	3,051	3,758	14,932	8,568	449	918.17	-0.9
Apr	282	3,449	4,119	14,043	8,492	287	1,013.29	10.4
May	302	2,718	3,493	13,783	8,156	294	1,114.44	10.0
Jun	241	1,591	2,106	13,802	7,049	289	1,286.47	15.4
Jul	315	1,090	1,460	12,718	7,289	299	1,442.51	12.1
Aug	783	716	872	12,594	6,910	436	1,458.26	1.1
Sep	519	861	958	13,829	7,157	263	1,453.78	-0.3
Oct	267 P	1,548 P	1,720 P	14,091	6,614	426	1,216.12	-16.3
Nov	211 P	2,030 P	2,643 P	10,821	5,923	319	1,095.40	-9.9
Dec	191 P	2,604 P	3,327 P	11,547	6,323	453	728.65	-33.5
2009 Jan	198 P	2,873 P	3,789 P	10,721	5,425	449	585.10	-19.7
Feb	240 P	2,878 P	3,430 P	8,421	4,626	144	711.88	21.7
Mar	254 P	2,301 P	2,599 P	10,015	5,134	284	683.26	-4.0
Apr	306 P	2,762 P	2,925 P	8,284	4,759	417	658.77	-3.6
May	315 P	2,072 P	2,187 P	9,190	5,211	284	630.84	-4.2
Jun	221 P	1,204 P	1,341 P	9,712	5,406	232	675.38	7.1
Jul	280 P	739 P	925 P	10,633	6,160	424 P	827.77 P	22.6
Aug	755 P	621 P	698 P	10,291	5,874	350 P	774.54 P	-6.4
Sep	481 P	791 P	855 P	11,512	5,919	294 P	741.81 E	-4.2

(1) Sourced from Ministry of Agriculture and Forestry.

(2) Sourced from New Zealand Transport Agency.

(3) This price may fluctuate with changes in sources of supply and types of crude oil being imported. Prices are estimated for the latest month.

(4) Imports are valued cif (cost, including insurance and freight to New Zealand).

(5) Figures are calculated on unrounded data.

HS – New Zealand Harmonised System Classification. (HS2007 applies to January 2007 and later data. HS2002 is used for earlier data.)

**Symbols:**

P provisional (Statistics for the latest three months are provisional.)

E estimated

... not applicable

**Overseas Merchandise Trade: September 2009**

Table 10

**Exports and Imports by Standard International Trade Classification (SITC)<sup>(1)(2)(3)</sup>**

SITC code (4)	Section	Month of September			Three months ended September			12 months ended September		
		2008	2009 P	%	2008	2009 P	%	2008	2009 P	%
		\$(million)		change	\$(million)		change	\$(million)		change
<b>Exports (fob)</b>										
0	Food and live animals	1,266	1,113	-12.1	4,135	3,715	-10.2	19,714	20,425	3.6
1	Beverages and tobacco	122	118	-3.0	313	329	5.2	1,027	1,200	16.8
2	Crude materials, (inedible, except fuels)	337	353	4.8	1,072	1,017	-5.1	4,078	4,134	1.4
3	Mineral fuels, (lubricants and related materials) <sup>(5)</sup>	188	240	27.8	905	648	-28.5	3,199	1,894	-40.8
4	Animal and vegetable oils, (fats and waxes)	9	6	-34.1	50	26	-48.6	196	141	-27.9
5	Chemicals and related products	164	141	-14.0	448	421	-6.1	2,044	2,342	14.6
6	Manufactured goods (classified chiefly by material)	397	312	-21.4	1,171	926	-20.9	4,289	3,729	-13.1
7	Machinery and transport equipment	311	249	-20.0	1,001	778	-22.3	3,783	3,764	-0.5
8	Miscellaneous manufactured articles	153	150	-2.3	469	443	-5.6	1,722	1,810	5.1
9	Other <sup>(6)</sup>	227	145	-36.1	615	441	-28.4	1,920	2,144	11.7
T	Total: sections 0–9 <sup>(7)</sup>	3,173	2,826	-10.9	10,180	8,743	-14.1	41,971	41,584	-0.9
M	Total manufactures: sections 5–8 <sup>(8)</sup>	1,025	851	-17.0	3,089	2,568	-16.9	11,838	11,645	-1.6
<b>Imports (cif)</b>										
0	Food and live animals	353	298	-15.5	1,003	916	-8.7	3,413	3,683	7.9
1	Beverages and tobacco	44	41	-8.3	128	118	-7.8	522	519	-0.5
2	Crude materials, (inedible, except fuels)	192	68	-64.8	415	192	-53.8	1,210	972	-19.7
3	Mineral fuels, (lubricants and related materials) <sup>(5)</sup>	713	467	-34.5	2,504	1,539	-38.5	8,143	6,382	-21.6
4	Animal and vegetable oils, (fats and waxes)	21	11	-46.4	79	56	-30.0	240	248	3.0
5	Chemicals and related products	614	431	-29.8	1,553	1,219	-21.5	5,062	5,109	0.9
6	Manufactured goods (classified chiefly by material)	551	405	-26.5	1,528	1,162	-24.0	5,595	5,174	-7.5
7	Machinery and transport equipment	1,331	980	-26.4	4,153	3,247	-21.8	16,636	14,537	-12.6
8	Miscellaneous manufactured articles	569	523	-8.1	1,603	1,532	-4.4	5,822	6,107	4.9
9	Other <sup>(6)</sup>	35	26	-25.3	110	84	-23.9	371	387	4.2
T	Total: sections 0–9 <sup>(7)</sup>	4,425	3,250	-26.6	13,076	10,063	-23.0	47,015	43,119	-8.3
M	Total manufactures: sections 5–8 <sup>(8)</sup>	3,066	2,339	-23.7	8,836	7,159	-19.0	33,115	30,928	-6.6
<b>Balance (fob minus cif)</b>										
0	Food and live animals	914	815	...	3,132	2,799	...	16,302	16,742	...
1	Beverages and tobacco	78	78	...	185	211	...	505	681	...
2	Crude materials, (inedible, except fuels)	145	285	...	656	825	...	2,867	3,162	...
3	Mineral fuels, (lubricants and related materials) <sup>(5)</sup>	-525	-227	...	-1,598	-891	...	-4,944	-4,488	...
4	Animal and vegetable oils, (fats and waxes)	-13	-6	...	-29	-30	...	-45	-106	...
5	Chemicals and related products	-451	-291	...	-1,105	-798	...	-3,018	-2,767	...
6	Manufactured goods (classified chiefly by material)	-154	-93	...	-357	-236	...	-1,305	-1,445	...
7	Machinery and transport equipment	-1,020	-731	...	-3,151	-2,469	...	-12,853	-10,773	...
8	Miscellaneous manufactured articles	-416	-374	...	-1,133	-1,089	...	-4,100	-4,297	...
9	Other <sup>(6)</sup>	191	119	...	505	357	...	1,548	1,757	...
T	Total: sections 0–9 <sup>(7)</sup>	-1,252	-424	...	-2,896	-1,320	...	-5,043	-1,535	...
M	Total manufactures: sections 5–8 <sup>(8)</sup>	-2,041	-1,488	...	-5,747	-4,591	...	-21,277	-19,282	...

(1) Exports are valued fob (free on board – the value of goods at New Zealand ports before export) and include re-exports, while imports are valued cif (cost, including insurance and freight to New Zealand).

(2) Figures are calculated on unrounded data.

(3) Some section values exclude confidential data. All excluded confidential data is included in section 9 (other).

(4) These codes are used in Infoshare series EXPM.SITC1& and IMPM.SITC1& (at position '&') for exports and imports data. No series for balance data.

(5) For the latest month, values for crude oil and some other petroleum products are calculated from estimated prices.

(6) Commodities and transactions not classified elsewhere in SITC.

(7) Totals may not match merchandise trade totals as some commodities (eg monetary gold) are excluded from SITC.

(8) Excluding food and fuel manufactures.

**Symbols:**

P provisional (Statistics for the latest three months are provisional.)

... not applicable

**Overseas Merchandise Trade: September 2009**

Table 11

**Overseas Merchandise Trade**  
*Seasonally adjusted and trend values – quarterly*<sup>(1)(2)(3)</sup>

	Seasonally adjusted <sup>(4)</sup>					Trend <sup>(5)</sup>				
	Exports (including re-exports) (fob)	Change from previous quarter	Imports (cif)	Change from previous quarter	Trade balance (exports minus imports)	Exports (including re-exports) (fob)	Change from previous quarter	Imports (cif) <sup>(6)</sup>	Change from previous quarter	Trade balance (exports minus imports) <sup>(6)</sup>
<i>Infoshare series</i>	<i>EXPQ.SH99FS</i>		<i>IMPQ.SOX1SCS</i>			<i>EXPQ.SH99FT</i>		<i>IMPQ.SOX1SCT</i>		
	\$(million)	%	\$(million)	%	\$(million)	\$(million)	%	\$(million)	%	\$(million)
<b>Three months ended</b>										
2001 Sep	8,274	-0.7	7,871	-1.6	402	8,271	0.1	7,920	0	352
Dec	8,079	-2.4	7,949	1.0	131	8,112	-1.9	7,952	0.4	160
2002 Mar	8,021	-0.7	8,049	1.3	-28	8,021	-1.1	7,991	0.5	30
Jun	7,930	-1.1	7,944	-1.3	-14	7,897	-1.5	8,033	0.5	-136
Sep	7,644	-3.6	8,194	3.2	-551	7,672	-2.9	8,142	1.4	-470
Dec	7,446	-2.6	8,149	-0.5	-703	7,444	-3.0	8,113	-0.4	-669
2003 Mar	7,239	-2.8	7,867	-3.5	-628	7,199	-3.3	7,930	-2.3	-731
Jun	6,962	-3.8	7,904	0.5	-942	7,039	-2.2	7,882	-0.6	-843
Sep	7,107	2.1	7,965	0.8	-857	7,036	0	7,943	0.8	-907
Dec	7,122	0.2	8,056	1.2	-935	7,179	2.0	8,118	2.2	-939
2004 Mar	7,426	4.3	8,479	5.2	-1,053	7,410	3.2	8,448	4.1	-1,038
Jun	8,106	9.2	8,932	5.4	-826	7,628	2.9	8,628	2.1	-1,001
Sep	7,346	-9.4	8,672	-2.9	-1,325	7,719	1.2	8,658	0.3	-939
Dec	7,791	6.1	8,841	2.0	-1,050	7,776	0.7	8,797	1.6	-1,020
2005 Mar	7,785	-0.1	9,035	2.2	-1,250	7,776	0	9,061	3.0	-1,285
Jun	7,667	-1.5	9,288	2.8	-1,622	7,652	-1.6	9,283	2.5	-1,631
Sep	7,562	-1.4	9,376	0.9	-1,814	7,610	-0.6	9,296	0.1	-1,686
Dec	7,796	3.1	9,557	1.9	-1,761	7,728	1.6	9,252	-0.5	-1,524
2006 Mar	8,046	3.2	9,953	4.1	-1,907	8,182	5.9	9,519	2.9	-1,337
Jun	8,916	10.8	10,222	2.7	-1,305	8,844	8.1	9,951	4.5	-1,107
Sep	9,156	2.7	10,339	1.1	-1,183	9,008	1.9	10,048	1.0	-1,040
Dec	8,502	-7.1	10,142	-1.9	-1,641	8,718	-3.2	10,029	-0.2	-1,312
2007 Mar	8,711	2.5	10,373	2.3	-1,662	8,575	-1.6	10,039	0.1	-1,465
Jun	8,599	-1.3	10,358	-0.1	-1,759	8,610	0.4	9,975	-0.6	-1,364
Sep	8,836	2.7	10,034	-3.1	-1,199	8,994	4.5	10,158	1.8	-1,165
Dec	10,415	17.9	11,022	9.8	-607	9,776	8.7	10,732	5.6	-956
2008 Mar	10,270	-1.4	11,260	2.2	-990	10,265	5.0	11,337	5.6	-1,072
Jun	10,398	1.2	12,344	9.6	-1,945	10,493	2.2	11,866	4.7	-1,374
Sep	10,960	5.4	12,401	0.5	-1,441	10,966	4.5	12,324	3.9	-1,358
Dec	11,306	3.2	12,382	-0.2	-1,075	11,182	2.0	11,984	-2.8	-802
2009 Mar	10,704	-5.3	10,743	-13.2	-38	10,783	-3.6	10,862	-9.4	-78
Jun	10,117	-5.5	10,379	-3.4	-262	10,094	-6.4	9,936	-8.5	159
Sep	9,431	-6.8	9,535	-8.1	-104	9,449	-6.4	9,413	-5.3	36

(1) Exports are valued fob (free on board – the value of goods at New Zealand ports before export), imports are valued cif (cost, including insurance and freight to New Zealand).

(2) Figures are calculated on unrounded data.

(3) Values, particularly for the latest periods, are subject to revision each month.

(4) Seasonally adjusted values exclude estimated seasonal fluctuations.

(5) Trend values exclude estimated seasonal fluctuations and short-term irregular movements.

(6) Excludes individual import items with (cif) values of \$100 million or more (such as large aircraft and ships).

Overseas Merchandise Trade: September 2009

Table 12

Exports by Top 10 HS Categories<sup>(1)(2)</sup>  
 Values – seasonally adjusted<sup>(3)(4)</sup>

		Milk powder, butter, and cheese	Meat and edible offal	Logs, wood and wood articles	Mechanical machinery and equipment	Crude oil <sup>(5)</sup>	Fruit	Fish, crustaceans and molluscs	Electrical machinery and equipment	Wine	Casein and caseinates	Total merchandise exports
HS codes		0401-0406	02	44	84	2709	0803-0814	03	85	22	3501	01-98
Infoshare series EXPQ		SH4AFS	SH1DFS	SH44FS	SH13FS	S2U27CF	SH8AFS	SH03FS	SH14FS	SH21FS	SH1RFS	SH99FS
Derived from: EXPQ		S2U04AF	S2T02F	S2T44F	S2T84F		S2U08AF	S2T03F	S2T85F	S2U22AF	S2U35AF	
\$(million)												
<b>Three months ended</b>												
2005	Sep	1,287	1,157	476	433	128	279	270	251	113	141	7,562
	Dec	1,350	1,157	472	432	76	324	281	258	122	177	7,796
2006	Mar	1,368	1,002	486	466	178	313	290	265	134	136	8,046
	Jun	1,732	1,213	527	466	131	288	305	272	147	201	8,916
	Sep	1,755	1,291	556	490	94	328	305	283	167	261	9,156
	Dec	1,451	1,217	559	461	80	271	295	276	157	175	8,502
2007	Mar	1,632	1,126	550	459	98	285	285	271	192	200	8,711
	Jun	1,685	1,040	539	466	202	310	268	274	186	203	8,599
	Sep	1,730	1,062	511	484	339	318	278	251	193	183	8,836
	Dec	2,324	1,116	492	480	725	438	274	256	188	243	10,415
2008	Mar	2,414	1,186	513	468	574	316	277	255	200	248	10,270
	Jun	2,085	1,268	485	472	903	349	298	261	218	187	10,398
	Sep	2,300	1,351	556	454	820	387	308	276	228	222	10,960
	Dec	2,380	1,394	623	488	473	399	334	280	251	298	11,306
2009	Mar	2,166	1,426	548	471	254	440	350	266	247	285	10,704
	Jun	2,112	1,347	600	429	416	406	312	242	267	223	10,117
	Sep	1,994	1,101	588	368	584	384	306	233	240	198	9,431
<b>Percentage change from previous period</b>												
2005	Sep	5.4	2.5	-1.2	5.5	12.5	-5.9	-10.8	1.9	-4.3	-10.7	-1.4
	Dec	4.8	-0.1	-0.8	-0.3	-40.5	16.3	3.8	2.6	7.9	25.2	3.1
2006	Mar	1.4	-13.3	2.8	7.8	135.1	-3.5	3.3	3.0	10.2	-23.0	3.2
	Jun	26.6	21.0	8.5	0.0	-26.4	-7.8	5.1	2.5	9.8	47.6	10.8
	Sep	1.3	6.4	5.5	5.3	-28.4	13.9	0.3	4.2	13.2	30.0	2.7
	Dec	-17.3	-5.7	0.6	-6.1	-14.6	-17.4	-3.2	-2.5	-5.7	-33.1	-7.1
2007	Mar	12.4	-7.5	-1.7	-0.3	22.5	5.3	-3.6	-2.0	21.8	14.5	2.5
	Jun	3.2	-7.7	-2.0	1.5	105.6	8.5	-6.0	1.3	-2.8	1.7	-1.3
	Sep	2.7	2.1	-5.2	3.9	67.8	2.7	3.7	-8.4	3.7	-10.0	2.7
	Dec	34.3	5.1	-3.7	-0.8	113.8	37.7	-1.3	1.8	-2.6	32.9	17.9
2008	Mar	3.9	6.2	4.2	-2.5	-20.9	-27.8	1.3	-0.3	5.9	2.0	-1.4
	Jun	-13.6	7.0	-5.5	0.9	57.4	10.4	7.4	2.6	9.4	-24.4	1.2
	Sep	10.3	6.5	14.8	-3.8	-9.1	10.7	3.3	5.6	4.5	18.3	5.4
	Dec	3.4	3.2	12.0	7.4	-42.4	3.2	8.7	1.5	10.1	34.6	3.2
2009	Mar	-9.0	2.4	-12.1	-3.3	-46.2	10.2	4.8	-5.3	-1.5	-4.5	-5.3
	Jun	-2.5	-5.5	9.4	-9.0	63.7	-7.8	-10.9	-8.8	8.1	-21.6	-5.5
	Sep	-5.6	-18.3	-1.9	-14.1	40.2	-5.4	-1.9	-3.9	-10.3	-11.3	-6.8

(1) Exports are valued fob (free on board – the value of goods at New Zealand ports before export) and include re-exports.

(2) Figures are calculated on unrounded data.

(3) Seasonally adjusted values, particularly for the latest periods, are subject to revision each quarter.

(4) Seasonally adjusted values exclude estimated seasonal fluctuations, but include short-term irregular movements.

(5) This series is not seasonally adjusted. This is because it does not have stable seasonality. Statistics for the latest three months are provisional.

HS – New Zealand Harmonised System Classification. (HS2007 applies to January 2007 and later data. HS2002 is used for earlier data.)

Overseas Merchandise Trade: September 2009

Table 13

Exports by Top 10 HS Categories  
Quantities – seasonally adjusted<sup>(1)(2)</sup>

	Milk powder, butter, and cheese	Meat and edible offal	Logs and wood <sup>(3)</sup>	Mechanical machinery and equipment	Crude oil <sup>(4)</sup>	Fruit	Fish, crustaceans and molluscs <sup>(3)</sup>	Electrical machinery and equipment	Wine	Casein and caseinates	Total merchandise exports	
HS codes	0401-0406	02	4403, 4406-4408, 4410-4411, 4413	84	2709	0803-0814	03 (excluding 030710)	85	2204	3501	01-98	
Infoshare series EXPQ.	SH4AQS	SH1DQS	SH44QS		SH23Q	SH8AQS	SH03QS		SH21QS	SH1RQS		
Derived from: EXPQ.	SH4AQ	SH1DQ	SH44Q			SH8AQ	SH03Q		SH21Q	SH1RQ		
	tonnes (000)	tonnes (000)	cu. metres (000)	(5)	tonnes (000)	tonnes (000)	tonnes (000)	(5)	Litres (000)	tonnes (000)	(5)	
<b>Three months ended</b>												
2005	Sep	380	214	1,969	..	178	163	74	..	13	15	..
	Dec	408	225	2,054	..	110	187	77	..	15	20	..
2006	Mar	406	188	1,894	..	225	166	76	..	14	14	..
	Jun	494	212	2,069	..	140	144	69	..	15	20	..
	Sep	503	216	2,173	..	97	159	68	..	17	28	..
	Dec	466	220	2,318	..	108	135	70	..	17	20	..
2007	Mar	498	208	2,302	..	136	141	69	..	21	22	..
	Jun	469	204	2,286	..	243	164	69	..	21	23	..
	Sep	398	206	2,062	..	437	175	74	..	22	18	..
	Dec	480	209	1,971	..	794	237	68	..	21	23	..
2008	Mar	446	222	2,579	..	622	150	72	..	23	21	..
	Jun	383	221	2,051	..	768	167	68	..	24	14	..
	Sep	408	223	2,347	..	622	172	62	..	25	16	..
	Dec	412	212	2,352	..	517	167	59	..	27	19	..
2009	Mar	490	207	2,459	..	388	185	58	..	28	20	..
	Jun	591	210	2,958	..	645	174	60	..	33	21	..
	Sep	603	176	3,093	..	711	170	65	..	31	22	..
<b>Percentage change from previous period</b>												
2005	Sep	-0.6	2.6	3.0	..	-8.7	-2.6	-5.6	..	-8.0	-19.0	..
	Dec	7.6	5.0	4.3	..	-38.3	14.9	2.8	..	11.8	35.5	..
2006	Mar	-0.6	-16.3	-7.8	..	104.7	-11.2	-0.7	..	-4.5	-30.4	..
	Jun	21.7	12.7	9.2	..	-38.0	-13.1	-9.4	..	6.4	44.4	..
	Sep	1.8	1.8	5.0	..	-30.6	10.4	-1.4	..	14.4	36.9	..
	Dec	-7.3	2.0	6.7	..	11.3	-15.2	3.6	..	0.9	-27.2	..
2007	Mar	6.8	-5.8	-0.7	..	26.3	4.5	-2.3	..	20.6	11.1	..
	Jun	-5.8	-1.9	-0.7	..	78.0	16.3	0.4	..	-2.2	1.9	..
	Sep	-15.1	1.3	-9.8	..	80.3	6.7	7.8	..	4.9	-19.8	..
	Dec	20.6	1.5	-4.4	..	81.4	35.4	-8.7	..	-4.3	24.5	..
2008	Mar	-7.2	5.8	30.8	..	-21.6	-36.9	6.7	..	8.7	-8.7	..
	Jun	-14.1	-0.4	-20.5	..	23.3	11.8	-5.8	..	5.6	-34.5	..
	Sep	6.6	1.2	14.4	..	-19.0	2.9	-9.4	..	3.8	15.1	..
	Dec	1.0	-4.9	0.2	..	-16.8	-2.9	-4.0	..	10.7	22.5	..
2009	Mar	18.7	-2.3	4.5	..	-24.9	10.8	-2.7	..	2.1	3.0	..
	Jun	20.7	1.2	20.3	..	66.1	-6.2	3.0	..	19.6	6.6	..
	Sep	2.0	-16.0	4.6	..	10.4	-1.9	9.5	..	-6.0	6.2	..

(1) Seasonally adjusted quantities exclude estimated seasonal fluctuations, but include short-term irregular movements.

(2) Seasonally adjusted quantities particularly for the latest periods, are subject to revision each quarter. Re-exports are included.

(3) This quantity series is not directly comparable to the equivalent value series in table 12. See 'HS codes' in the tables for differences.

(4) This series is not seasonally adjusted. This is because it does not have stable seasonality. Statistics for the latest three months are provisional.

(5) There is no single, consistent unit of quantity available for this category.

HS – New Zealand Harmonised System Classification. (HS2007 applies to January 2007 and later data. HS2002 is used for earlier data.)

Symbol:

.. not applicable

Overseas Merchandise Trade: September 2009

Table 14

Imports by Broad Economic Category (BEC) Group<sup>(1)</sup>

Values – seasonally adjusted<sup>(2)(3)</sup>

	Capital goods <sup>(4)</sup>		Intermediate goods <sup>(5)</sup>			Consumption goods <sup>(8)</sup>	Other categories			All merchandise imports <sup>(10)</sup>
	Machinery and plant	Transport equipment <sup>(6)</sup>	Crude oil <sup>(6)(7)</sup>	Other	Total		Passenger motor cars	Petrol and avgas <sup>(6)(7)</sup>	Military and other goods <sup>(6)(9)</sup>	
<i>BEC codes</i>	41	521	313	111, 121, 2, 311, 312, 314, 322, 42, 53	111, 121, 2, 31, 322, 42, 53	112, 122, 522, 6	51	321	7	1-7
<i>Infoshare series BECQ.</i>	<i>SIA410S</i>	<i>SIA521</i>	<i>SID313</i>	<i>SIG990S</i>	<i>SIG999S</i>	<i>SIK999S</i>	<i>SIL510S</i>	<i>SIM321</i>	<i>SIN700</i>	<i>IMPQ.SOX1SCS</i>
<i>Derived from: BECQ.</i>	<i>SIA410</i>			<i>SIG990</i>	<i>SIG999</i>	<i>SIK999</i>	<i>SIL510</i>			

\$(million)

Three months ended

2006	Sep	1,448	574	935	3,851	4,687	2,519	722	380	53	10,339
	Dec	1,502	589	672	3,837	4,545	2,539	777	180	46	10,142
2007	Mar	1,535	498	625	3,990	4,640	2,602	771	281	30	10,373
	Jun	1,594	376	749	3,702	4,500	2,483	803	305	205	10,358
	Sep	1,562	352	805	3,765	4,452	2,591	784	290	67	10,034
	Dec	1,737	629	792	3,978	4,807	2,673	834	342	61	11,022
2008	Mar	1,706	403	1,063	4,183	5,303	2,623	845	294	45	11,260
	Jun	1,957	540	990	4,707	5,789	2,742	736	412	51	12,344
	Sep	1,785	501	1,450	4,934	6,173	2,822	746	318	123	12,401
	Dec	1,806	394	1,197	5,118	6,363	2,893	570	306	128	12,382
2009	Mar	1,757	245	559	4,477	5,054	2,924	375	278	72	10,743
	Jun	1,504	774	611	3,754	4,438	2,828	429	280	59	10,379
	Sep	1,427	231 P	839 E	3,757	4,443	2,666	486	261 P	79 P	9,535

Percentage change from previous period

2006	Sep	5.6	-3.0	25.7	2.6	3.8	0.0	-3.3	8.4	-19.3	1.1
	Dec	3.7	2.6	-28.2	-0.4	-3.0	0.8	7.7	-52.6	-14.0	-1.9
2007	Mar	2.2	-15.5	-6.9	4.0	2.1	2.5	-0.8	55.8	-33.5	2.3
	Jun	3.8	-24.4	19.8	-7.2	-3.0	-4.6	4.1	8.7	574.9	-0.1
	Sep	-2.0	-6.4	7.5	1.7	-1.1	4.4	-2.3	-4.9	-67.2	-3.1
	Dec	11.2	78.6	-1.6	5.7	8.0	3.2	6.4	17.8	-9.2	9.8
2008	Mar	-1.7	-36.0	34.2	5.1	10.3	-1.9	1.4	-14.0	-26.1	2.2
	Jun	14.7	34.1	-6.9	12.5	9.2	4.5	-12.9	40.1	14.0	9.6
	Sep	-8.8	-7.2	46.4	4.8	6.6	2.9	1.4	-22.8	138.7	0.5
	Dec	1.2	-21.3	-17.4	3.7	3.1	2.5	-23.6	-3.8	3.9	-0.2
2009	Mar	-2.7	-37.8	-53.3	-12.5	-20.6	1.1	-34.3	-9.0	-43.6	-13.2
	Jun	-14.4	216.0	9.2	-16.2	-12.2	-3.3	14.4	0.6	-18.6	-3.4
	Sep	-5.2	-70.1	37.5	0.1	0.1	-5.7	13.4	-6.9	33.9	-8.1

(1) Imports are valued cif (cost, including insurance and freight to New Zealand). Figures are calculated on unrounded data.

(2) Seasonally adjusted values exclude estimated seasonal fluctuations, but include short-term irregular movements.

(3) Seasonally adjusted values, particularly for the latest periods, are subject to revision each quarter.

(4) Excludes passenger motor cars. (There is a separate series for these because industry and household purchases cannot be split.)

(5) Excludes petrol and avgas. (There is a separate series for these because industry and household purchases cannot be split.)

(6) This series is not seasonally adjusted. This is because it does not have stable seasonality.

(7) For the latest month, values for crude oil and some other petroleum products are calculated from estimated prices.

(8) Excludes passenger motor cars, petrol and avgas, and military equipment.

(9) Military equipment (including frigates), confidential, miscellaneous and unclassified goods. Military helicopters are in capital transport equipment.

(10) This total series may not equal the sum of its parts because it is seasonally adjusted directly, and is calculated from total Harmonised

System (HS) data, while the categories use BEC data – some HS commodities (eg monetary gold) are excluded from BEC.

Symbols:

P provisional (Statistics for the latest three months are provisional.)

E estimated