

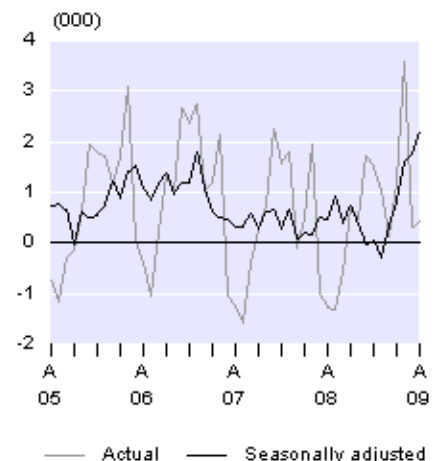
Embargoed until 10:45am – 21 May 2009

International Travel and Migration: April 2009

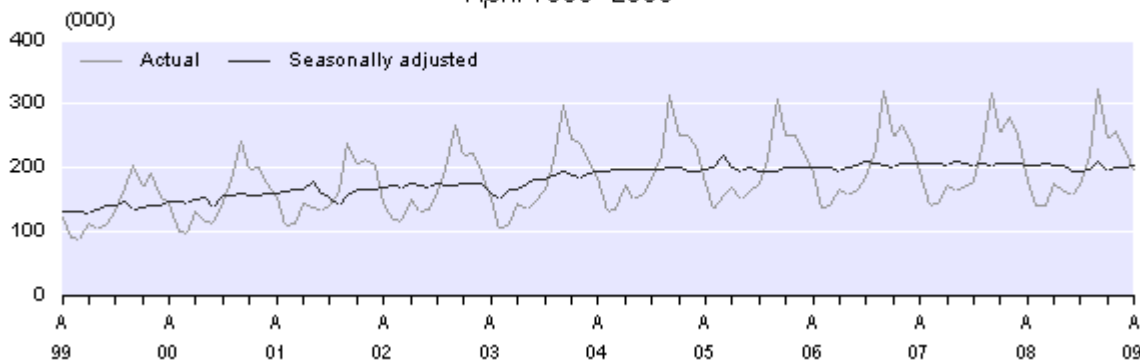
Highlights

- Visitor arrivals (195,900) were up 9 percent from April 2008 (179,400).
- There were more visitors from Australia (up 16,800) and Hong Kong (up 1,400), but fewer visitors from Korea (down 3,200) and Japan (down 1,100).
- New Zealand-resident departures (162,400) were down 1 percent from April 2008 (164,300).
- New Zealand residents departed on more trips to Australia (up 2,900), but fewer trips to Fiji (down 1,500) and China (down 1,100).
- Permanent and long-term arrivals exceeded departures by 2,200 on a seasonally adjusted basis.

Monthly Net Permanent and Long-term Migration
April 2005–09



Monthly Visitor Arrivals
April 1999–2009



Geoff Bascand
Government Statistician

21 May 2009
ISSN 1179-0407

See also [International Travel and Migration: April 2009 – Media release](#).

Commentary

Visitor arrivals

Monthly visitor arrivals

Short-term overseas visitor arrivals to New Zealand numbered 195,900 in April 2009. This figure is up 16,500 (9 percent) from April 2008 (179,400) and is the highest ever recorded for an April month. The shift in the timing of Easter, from March in 2008 to April in 2009, contributed to the increase. For the combined months of March and April 2009, visitor arrivals were down 2 percent on the same two months in 2008.

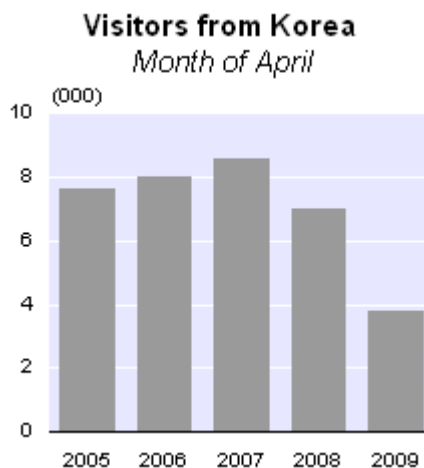
The estimated average number of visitors in New Zealand per day in April 2009 was 141,800, down 1 percent from the average of 143,800 in April 2008. This estimate is calculated from the date of arrival and intended length of stay of sampled visitor arrivals. The average intended stay of visitors who arrived in April 2009 was 17 days, down from 19 days in April 2008. The median (half stay shorter, and half stay longer than this duration) was 9 days, up from 8 days in April 2008.

Monthly visitors by source country

In April 2009, visitor arrivals from Australia were up 16,800 (23 percent). The shift in the timing of Easter contributed to this large increase. In the week ending on 12 April 2009 (Easter Sunday), there were 31,900 visitors from Australia, compared with 18,500 visitors during the equivalent period in 2008.

There were also more visitors from Hong Kong (up 1,400 or 113 percent), Germany (up 900 or 31 percent), and Thailand (up 500 or 14 percent). While visitors from Hong Kong more than doubled compared with April 2008, the increase was only 800 (or 38 percent) compared with April 2007.

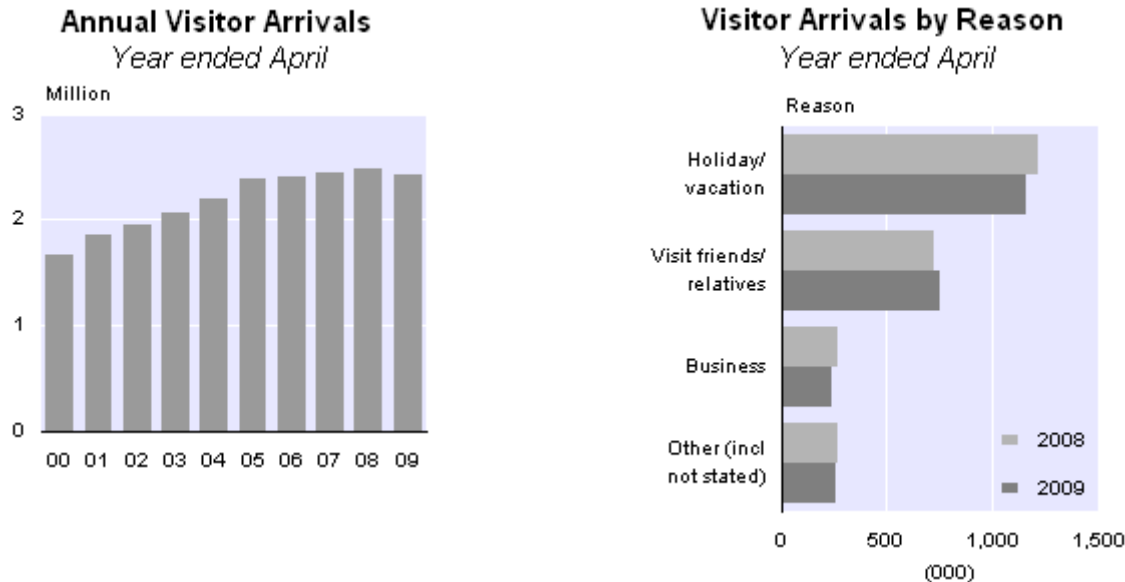
In contrast, there were fewer visitor arrivals from Korea (down 3,200 or 46 percent), Japan (down 1,100 or 16 percent), China (down 700 or 6 percent), and South Africa (down 500 or 22 percent).



Note: Provisional international travel statistics, including weekly and four-weekly visitor arrival data, are available on the Statistics NZ website. This data is updated each week with the most recently available information on visitor arrivals from 10 major source countries.

Annual visitor arrivals

During the April 2009 year, there were 2.417 million visitor arrivals, down 65,900 (3 percent) from the April 2008 year. A holiday was the main travel reason for 1.157 million visitors to New Zealand in the April 2009 year, down 56,900 (5 percent) from the previous year. Another 747,600 arrived to visit friends and relatives (up 20,600 or 3 percent), and 242,000 arrived for business (down 25,700 or 10 percent).



Annual visitors by source country

There were 992,700 visitor arrivals from Australia in the year ended April 2009, up 26,600 (3 percent) from the April 2008 year. Australia contributed 41 percent of all visitor arrivals to New Zealand in the April 2009 year, up from 28 percent in the year ended April 1997.

More visitors also came from Fiji (up 4,200 or 21 percent), France (up 2,300 or 12 percent), French Polynesia (up 2,200 or 14 percent), Singapore (up 2,200 or 8 percent), and Germany (up 2,000 or 3 percent) in the April 2009 year.

Fewer visitors came from the United Kingdom (down 27,200 or 9 percent), the United States (down 22,400 or 10 percent), Korea (down 22,200 or 25 percent), Japan (down 19,900 or 17 percent), and China (down 12,000 or 10 percent). After Australia, these five countries are New Zealand's largest sources of visitors.

Note: Detailed visitor data will be available in the April 2009 edition of *International Visitor Arrivals to New Zealand*, which can be ordered on the [International visitor arrivals subscription page](#) on the Statistics NZ website.

New Zealand-resident departures

Monthly resident departures

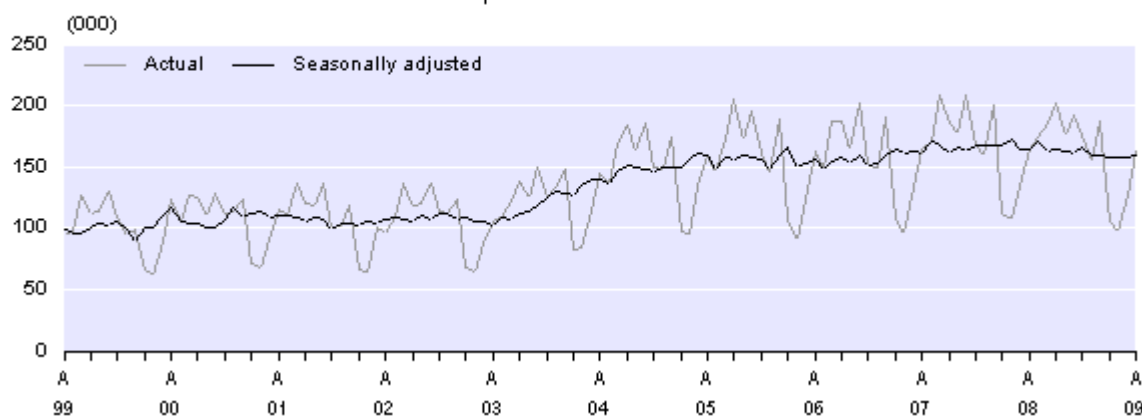
New Zealand residents departed on 162,400 short-term overseas trips in April 2009, down 1,900 (1 percent) from the 164,300 departures in April 2008. April 2009 is the sixth consecutive month in which New Zealand-resident departures were lower than for the same month of the previous year.

In April 2009, there were fewer trips to Fiji (down 1,500 or 21 percent), China (down 1,100 or 20 percent), and Japan (down 900 or 33 percent). In contrast, more residents departed to Australia (up 2,900 or 4 percent), Samoa (up 900 or 34 percent), and India (up 800 or 62 percent).

The estimated average number of New Zealand residents who were temporarily overseas during April 2009 was 93,800 per day, up 4 percent from the average of 90,300 in April 2008. This estimate is calculated from the date of departure and intended length of absence of sampled resident departures. The average intended absence of residents who departed in April 2009 was 20 days, up from 19 days in April 2008. The median was 10 days, unchanged from April 2008.

Monthly New Zealand-resident Short-term Departures

April 1999–2009



Annual resident departures

Short-term departures of New Zealand residents in the April 2009 year numbered 1.940 million, down 57,100 (3 percent) from the April 2008 year.

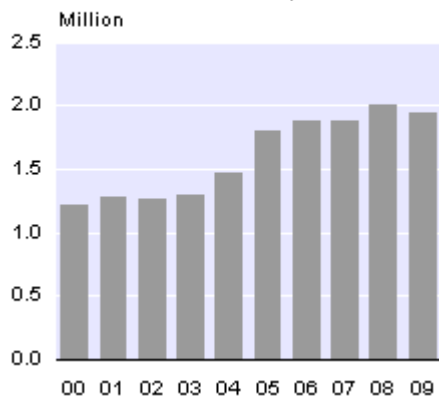
Trips to Australia (948,100), the most popular destination, were down 27,400 (3 percent) from the previous year. There were fewer trips to France in the April 2009 year (down 6,000 or 30 percent), largely due to the number of trips in the April 2008 year being boosted by the Rugby World Cup (held in September and October 2007).

There were also fewer trips to the United Kingdom (down 4,500 or 5 percent), Fiji (down 3,800 or 4 percent), China (down 3,400 or 6 percent), New Caledonia (down 3,300 or 29 percent), Singapore (down 2,800 or 18 percent), and Thailand (down 2,200 or 7 percent). There were more trips to Samoa (up 2,700 or 7 percent) and India (up 2,200 or 8 percent).

A holiday was the main travel reason for 799,600 New Zealand residents who departed in the April 2009 year, down 41,000 (5 percent) from the previous year. Another 643,300 were departing to visit friends and relatives (up 15,900 or 3 percent). Departures for business purposes (266,800) were down 24,800 (9 percent) from the year ended April 2008.

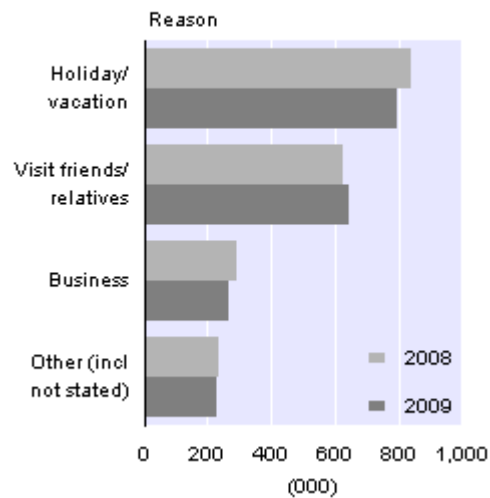
Annual Resident Departures

Year ended April



Resident Departures by Reason

Year ended April



Note: Provisional international travel statistics, including weekly and four-weekly resident departure data, are available on the Statistics NZ website. This data is updated each week with the most recently available information on resident departures to 10 major destination countries.

Permanent and long-term migration

Definition

Permanent and long-term (PLT) arrivals include people who arrive in New Zealand intending to stay for a period of 12 months or more (or permanently), plus New Zealand residents returning after an absence of 12 months or more. Included in the former group are people with New Zealand residency, as well as students and holders of work permits. PLT departures include New Zealand residents departing for an intended period of 12 months or more (or permanently), plus overseas visitors departing New Zealand after a stay of 12 months or more.

Monthly PLT migration

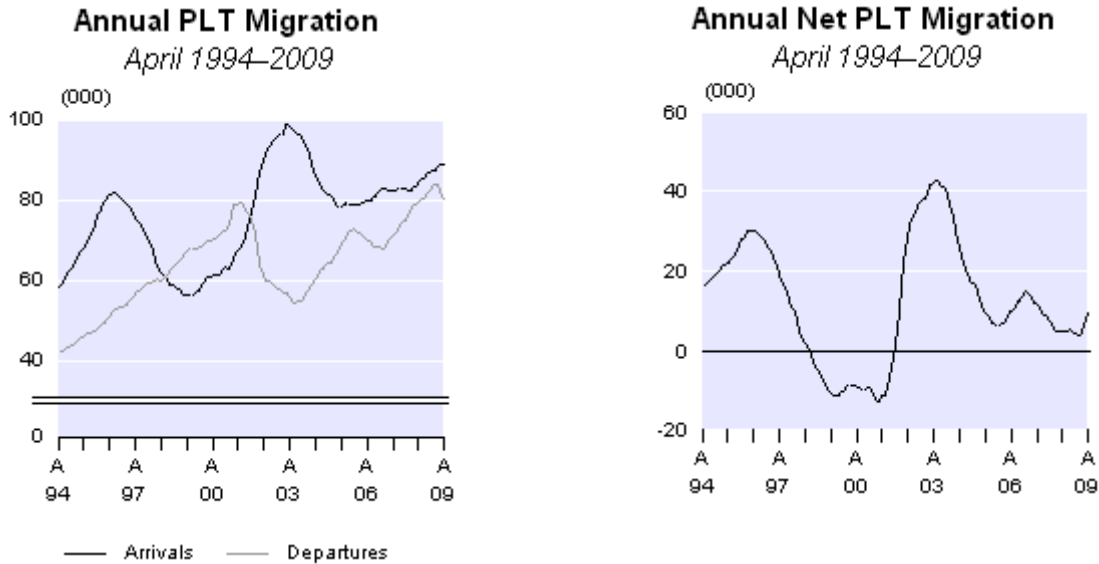
PLT arrivals exceeded departures by 400 in April 2009, compared with a net PLT outflow of 1,300 in April 2008. The increase was mainly due to 1,600 fewer PLT departures, including 1,300 fewer departures to Australia. There were also 300 more PLT arrivals of New Zealand citizens, while arrivals of non-New Zealand citizens decreased by 100.

On a seasonally adjusted basis, PLT arrivals exceeded PLT departures by 2,200 in April 2009, up from 1,700 in March 2009 and 1,600 in February 2009. The April 2009 seasonally adjusted figure for net PLT migration is the highest since January 2004 (2,500). The equivalent figures for the last three months are all well above the average of 400 recorded for the 25-month period from January 2007–2009.

In April 2009, there were net inflows of migrants from India (400) and the Philippines (300). There was a net outflow of 1,600 PLT migrants to Australia, down from the outflows of 3,200 in April 2008 and 2,500 in April 2007.

Annual PLT migration

In the year ended April 2009, there were 89,000 PLT arrivals, up 5,000 (6 percent) from the April 2008 year. Over the same period, there were 79,800 PLT departures, up 500 (less than 1 percent). As a result, net PLT migration was 9,200 in the April 2009 year, up from 4,700 in the April 2008 year.



The net PLT migration gain of 9,200 in the year ended April 2009 is below the annual average of 11,400 for the December years from 1990–2008. Net PLT migration varied substantially within this 19-year period. The net gain peaked at 30,200 in the April 1996 year and again at 42,500 in the May 2003 year. Net outflows were generally experienced during 1998–2001, with the highest being a net loss of 13,200 people in the February 2001 year.

Annual PLT migration by country

In the year ended April 2009, there were net PLT inflows from the United Kingdom (8,600), India (6,000), the Philippines (3,500), China (3,200), Fiji (3,100), and South Africa (2,600).

The net PLT outflow to Australia was 32,000 in the April 2009 year. While this was above the net outflow of 30,600 in the April 2008 year, it was down from the record net outflows of 35,400 in both the December 2008 and January 2009 years. The latest net outflow resulted from 45,300 PLT departures to Australia, partly offset by 13,300 PLT arrivals from Australia. About 90 percent of the PLT departures to Australia were New Zealand citizens (40,500). Of the PLT arrivals from Australia, almost two-thirds were New Zealand citizens (8,600), similar to levels observed over the past decade.

Annual PLT migration by citizenship

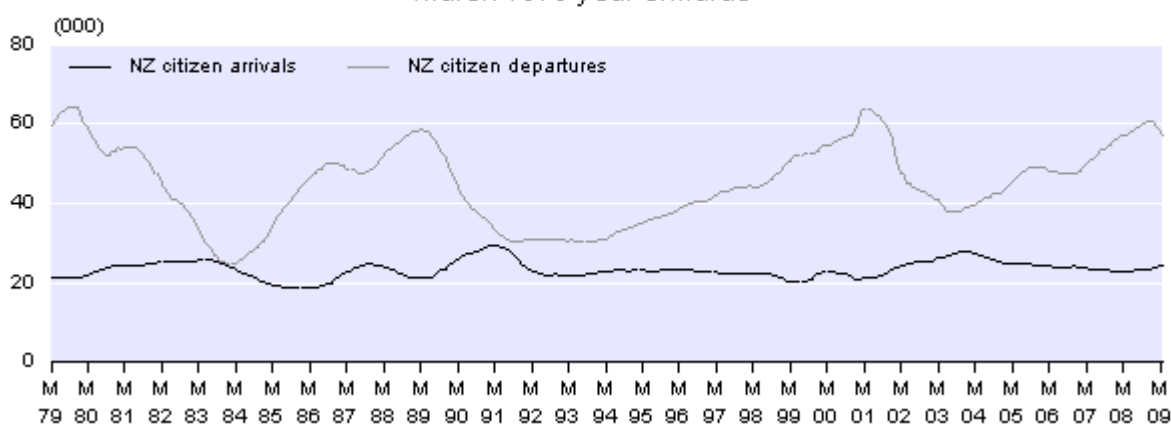
A net inflow of 41,300 non-New Zealand citizens and a net outflow of 32,100 New Zealand citizens were recorded in the year ended April 2009. The majority of the net outflow of New Zealand citizens was to Australia (31,900), followed by the United Arab Emirates (500) and Canada (400).

PLT arrivals of New Zealand citizens numbered 24,500 in the April 2009 year, just above the average of 23,400 recorded for the 1979–2008 December years. Arrivals of New Zealand citizens tend to show little variation year-to-year, and the variation that does occur often follows trends in New Zealand citizen departures a few years earlier. The highest number of New Zealand citizen arrivals was 29,600 in the March 1991 year, which followed a peak in New Zealand citizen departures in 1989. More recently, New Zealand citizen arrivals peaked at 27,800 in the October 2003 year, following a peak in New Zealand citizen departures in 2001.

PLT departures of New Zealand citizens have shown much more annual variation than arrivals of New Zealand citizens. The highest number of New Zealand citizen departures was 64,300 in the October 1979 year, but by the January 1984 year this had decreased to a low of 24,400. There were 56,600 PLT departures of New Zealand citizens in the April 2009 year, down 800 from the previous year.

Annual PLT Migration of New Zealand Citizens

March 1979 year onwards

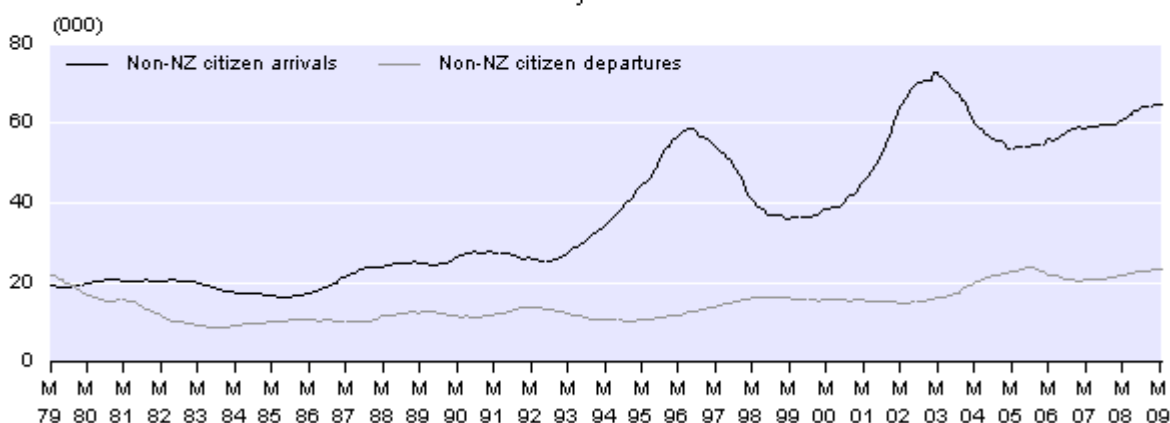


PLT arrivals of non-New Zealand citizens were less than 30,000 a year between 1979 and 1992, then doubled to reach a peak of 58,800 in the July 1996 year. Another peak, of 72,800, was reached in the February 2003 year. The changes in non-New Zealand citizen arrivals reflect changes in arrivals of temporary workers (including working holidaymakers) and overseas students staying for 12 months or more, as well as arrivals for residence. Non-New Zealand citizen arrivals have again been increasing since 2005, with 64,500 in the April 2009 year (up 3,400 from the April 2008 year).

PLT departures of non-New Zealand citizens have generally been increasing since 1984, corresponding with the general increase in non-New Zealand citizen arrivals. There were 23,200 PLT departures of non-New Zealand citizens in the April 2009 year, up 1,300 from the April 2008 year.

Annual PLT Migration of Non-New Zealand Citizens

March 1979 year onwards



Annual PLT migration by permit type

In the April 2009 year, 28,500 PLT arrivals were Australian or New Zealand citizens who did not require a permit to remain in New Zealand. Of PLT arrivals who did require a permit, 23,900 arrived on work permits, 16,300 arrived on student permits, 14,400 arrived on residence permits, and 5,300 arrived on visitor permits. Compared with the April 2008 year, there were more PLT arrivals on student permits (up 3,100) and work permits (up 1,700), but fewer arrivals on residence permits (down 900). The majority of residence approvals in recent years have been granted onshore, to people who arrived on other permit types.

Recent international travel and migration articles

Statistics NZ has recently released a number of articles on international travel and migration topics. These can be accessed on the [International travel and migration articles](#) page of the Statistics NZ website. The most recent releases are:

May 2009	<i>Visitors from the Republic of Korea, 1989–2008</i> examines the large fluctuations in the number of visitors from Korea, and the characteristics of these visitors.
April 2009	<i>Visitors from the Americas</i> examines changes in the number of visitors from the United States, Canada, Brazil, Argentina, and Chile between 1979 and 2008.
March 2009	<i>Christmas travel 2008</i> examines travel to and from New Zealand around the peak Christmas period.

Free online database

A large number of international travel and migration tables are available through Statistics NZ's Infoshare database (www.stats.govt.nz/infoshare), a free-of-charge online tool that provides access to a range of time-series data. The international travel and migration subject can be found under Tourism on the Browse page of the database.

The international travel and migration tables have recently been developed to replace the external migration tables (available under Population on the Browse page). Statistics NZ is developing a communication plan to ensure users have adequate information and time to transition from the external migration subject to the international travel and migration subject, before the former becomes unavailable later this year.

Seasonally adjusted and trend series

Statistics NZ has made a number of changes to seasonally adjusted international travel and migration series in recent months.

An improved seasonal adjustment process for monthly series was introduced in March 2009. Additional adjustments are now included for the effect of the number and type of trading days in the month (as more people generally arrive and depart on Friday, Saturday, and Sunday), and for holiday periods which have important effects on travel but in different months each year (eg Easter can be in March or April). The addition of these adjustments results in less volatile seasonally adjusted series, and has allowed associated trend series to be published.

In April 2009, quarterly seasonally adjusted international travel and migration series were introduced. The quarterly series are adjusted independently of the adjustments made to the monthly series. The actual monthly figures are summed into quarters and then seasonally adjusted, which gives slightly different results to summing the monthly seasonally adjusted figures.

More detail about the seasonal adjustment process is in the technical notes of this release.

Tourism and migration tables

As previously advised, Statistics NZ will no longer publish the annual tourism and migration tables produced since 2000. The detailed international travel and migration data is now freely available through the Infoshare database.

In addition to data from the international travel and migration dataset, the following data were included in the tables, with alternative sources noted:

- forecasts of visitor arrivals, available on the [Ministry of Tourism's research website](#)
- residence approvals, work permits and student permits, available on the [Immigration New Zealand statistics webpage](#)
- citizenship approvals, available in the New Zealand Official Yearbook which is published every second year by Statistics NZ
- the birthplace of New Zealand residents, and internal migration within New Zealand, both sourced from Statistics NZ's [2006 Census of Population and Dwellings](#)
- the projected population of New Zealand, from Statistics NZ's [national population projections](#)

For technical information contact:

Nick Thomson or Ian Richards

Christchurch 03 964 8700

Email: demography@stats.govt.nz

Next release ...

International Travel and Migration: May 2009 will be released on 22 June 2009.

Technical notes

Nature of data

The statistics in this release are based on final international travel and migration counts. They relate to the number of passenger movements, rather than to the number of people – that is, the multiple movements of individual people during a given reference period are each counted separately.

Free online database

A large number of international travel and migration tables are available through Statistics NZ's Infoshare database (www.stats.govt.nz/infoshare), a free-of-charge online tool that provides access to a range of time-series data. The international travel and migration subject can be found under Tourism on the Browse page of the database.

Changes in passenger type

In the preparation of international travel and migration statistics, the passenger type (overseas visitor, New Zealand-resident traveller, or permanent and long-term (PLT) migrant) is primarily determined by the passenger's response, on the arrival or departure card, to the questions on where they live and their length of stay or absence. If the person's intention changes later during the trip, this passenger type may no longer be correct. For example, a person may come to New Zealand with the declared intention of settling permanently (PLT migrant), but in fact may return overseas after a few months (overseas visitor). Data users should recognise the limitations inherent in the information supplied by travellers.

Sampling accuracy

The statistics for short-term passenger movements by country (that is, overseas visitor arrivals by country of last permanent residence, and New Zealand-resident departures by country of main destination) are derived from a systematic random sample taken each month from arrival and departure cards, and are therefore subject to sampling errors. However, total counts for arrivals and departures of overseas visitors and New Zealand residents are actual counts, which are not subject to sampling errors. Figures for PLT arrivals and departures are also actual counts and have no sampling errors.

New Zealand-resident short-term departures

The commentaries relating to New Zealand-resident short-term departures are based on data for the country of main destination – that is, the country where each departing person intended to spend most of their time while away from New Zealand.

Seasonally adjusted and trend series

The purpose of seasonally adjusting a time series is to measure and remove the varying seasonal components in the series (for example, there are more visitor arrivals during the New Zealand summer, due to the warmer weather and longer daylight hours). This makes the data for adjacent months more comparable.

An improved seasonal adjustment process was adopted in March 2009. The new process continues to use Statistics NZ's standard seasonal adjustment package, X-12-ARIMA, but incorporates enhancements which allow the specification and adjustment of additional calendar effects. These include the number and type of trading days in the month (as more people generally arrive and depart on Friday, Saturday, and Sunday), and holiday periods which have important effects on travel but in different months each year (eg Easter can be in March or April). The additional adjustments for the monthly series are:

- PLT arrivals: no additional adjustments
- PLT departures: no additional adjustments
- visitor arrivals: Chinese New Year, Easter, April/May school holidays, June/July school holidays, daily trading day
- visitor departures: Chinese New Year, Easter, September/October school holidays
- New Zealand-resident traveller arrivals: Easter, April/May school holidays, September/October school holidays, weekday/weekend trading day
- New Zealand-resident traveller departures: Chinese New Year, Easter, April/May school holidays, June/July school holidays, September/October school holidays, weekday/weekend trading day
- all composite series (total arrivals, total departures, total passenger movements, net PLT migration) are a combination of the series above.

Quarterly seasonally adjusted series were introduced in April 2009. The quarterly series are adjusted independently of the adjustments made to the monthly series. Hence, quarterly figures may not equal the sum of monthly seasonally adjusted figures. The additional adjustments made to the quarterly series are:

- PLT arrivals: no additional adjustments
- PLT departures: no additional adjustments
- visitor arrivals: Easter, June/July school holidays
- visitor departures: Easter, September/October school holidays
- New Zealand-resident traveller arrivals: September/October school holidays
- New Zealand-resident traveller departures: Easter, April/May school holidays, June/July school holidays
- all composite series (total arrivals, total departures, total passenger movements, net PLT migration) are a combination of the series above.

Seasonally adjusted and trend data back to January 1996 are subject to revision each period. The size of these revisions is expected to be minimal, with the largest revisions occurring in the periods immediately prior to the current month or quarter. Data before January 1996 is not revised. This cut-off is used because of the change to a four-term school year in 1996, which resulted in changes to the seasonal patterns of the New Zealand-resident arrivals and departures series.

Permit type

With the exception of New Zealand citizens, Australian citizens and a small number of other people exempt under the Immigration Act 1987, everyone entering New Zealand is required to obtain a permit to remain in New Zealand. People already in New Zealand can apply for a permit renewal or a new permit of a different type. However, Statistics NZ only holds data on the permit type that an individual was given on arrival.

The determination of passenger type (as an overseas visitor, New Zealand-resident traveller, or PLT migrant) by Statistics NZ is independent of the permit type a person holds. Passenger type is based on the time spent in and out of New Zealand, determined from past arrivals and departures of a person and responses to questions on the arrival or departure card.

Permit type data is available from July 2003 for arrivals of short-term overseas visitors and PLT migrants. It is not available for arrivals of short-term New Zealand-resident travellers or for departures of any passenger type.

Processing system

The current international travel and migration processing system, which incorporates scanning and image recognition technology, was first used to process the June 2004 arrival and departure cards. The determination of passenger type (overseas visitor, New Zealand-resident traveller, or PLT migrant) and capture of the information required for the sample are done automatically for the majority of the cards. Operator intervention is only required for approximately one-tenth of the cards. The system is used only for the production of statistics.

Users should be aware of the changes to the processing system when comparing data for June 2004 onwards with data for earlier periods.

More information

For more information, follow the [link](#) from the technical notes of this release on the Statistics NZ website.

Copyright

Information obtained from Statistics NZ may be freely used, reproduced, or quoted unless otherwise specified. In all cases Statistics NZ must be acknowledged as the source.

Liability

While care has been used in processing, analysing and extracting information, Statistics NZ gives no warranty that the information supplied is free from error. Statistics NZ shall not be liable for any loss suffered through the use, directly or indirectly, of any information, product or service.

Timing

Timed statistical releases are delivered using postal and electronic services provided by third parties. Delivery of these releases may be delayed by circumstances outside the control of Statistics NZ. Statistics NZ accepts no responsibility for any such delays.

Tables

The following tables are printed with this Hot Off The Press and can also be downloaded from the Statistics New Zealand website in Excel format. If you do not have access to Excel, you may use the [Excel file viewer](#) to view, print and export the contents of the file.

1. International travel and migration, by direction and passenger type, actual counts
2. International travel and migration, by direction and passenger type, seasonally adjusted and trend series
3. Short-term overseas visitor arrivals, by country of last permanent residence
4. Short-term New Zealand-resident traveller departures, by country of main destination
5. Permanent and long-term arrivals, by country of last permanent residence
6. Permanent and long-term departures, by country of next permanent residence
7. Net permanent and long-term migration, by country of last/next permanent residence
8. Permanent and long-term migration, by country of citizenship

Table 1

International Travel and Migration
By direction and passenger type
 Actual counts

Period	Arrivals				Departures				Net permanent & long-term migration ⁽⁷⁾
	Short-term overseas visitors ⁽¹⁾	Short-term NZ-resident travellers ⁽²⁾	Permanent & long-term migrants ⁽³⁾	Total	Short-term overseas visitors ⁽⁴⁾	Short-term NZ-resident travellers ⁽⁵⁾	Permanent & long-term migrants ⁽⁶⁾	Total	
<i>Series ref: ITM</i>	<i>SVAZA</i>	<i>SRAZA</i>	<i>SPZAA</i>	<i>STZAA</i>	<i>SVDZA</i>	<i>SRDZA</i>	<i>SPZDA</i>	<i>STZDA</i>	<i>SPZNA</i>
April month									
1999	121,548	96,390	4,399	222,337	143,760	94,484	6,173	244,417	-1,774
2000	143,681	115,497	4,635	263,813	160,010	123,644	6,523	290,177	-1,888
2001	153,186	112,695	5,529	271,410	174,468	114,685	6,217	295,370	-688
2002	143,877	106,133	7,048	257,058	186,236	95,472	5,306	287,014	1,742
2003	150,416	103,705	6,531	260,652	174,931	105,316	4,334	284,581	2,197
2004	184,379	136,045	5,245	325,669	216,622	144,074	5,314	366,010	-69
2005	174,757	144,929	5,692	325,378	218,446	159,567	6,425	384,438	-733
2006	191,648	152,483	5,500	349,631	224,072	162,790	5,897	392,759	-397
2007	193,229	156,762	5,385	355,376	229,367	163,682	6,641	399,690	-1,256
2008	179,388	132,865	5,859	318,112	221,359	164,309	7,127	392,795	-1,268
2009	195,883	149,241	5,975	351,099	224,810	162,384	5,549	392,743	426
Year ended April									
1999	1,523,403	1,188,127	56,735	2,768,265	1,530,466	1,180,977	67,431	2,778,874	-10,696
2000	1,674,022	1,229,208	61,325	2,964,555	1,674,110	1,222,442	70,426	2,966,978	-9,101
2001	1,857,845	1,300,900	67,359	3,226,104	1,854,016	1,286,485	78,759	3,219,260	-11,400
2002	1,945,522	1,286,797	89,884	3,322,203	1,930,913	1,268,070	61,819	3,260,802	28,065
2003	2,068,962	1,317,976	98,154	3,485,092	2,065,834	1,293,166	56,107	3,415,107	42,047
2004	2,197,390	1,484,194	86,187	3,767,771	2,216,928	1,472,374	60,475	3,749,777	25,712
2005	2,378,041	1,804,163	78,511	4,260,715	2,399,103	1,796,562	69,162	4,264,827	9,349
2006	2,395,688	1,890,716	79,933	4,366,337	2,402,285	1,870,876	69,858	4,343,019	10,075
2007	2,446,711	1,889,856	82,416	4,418,983	2,447,073	1,880,121	71,194	4,398,388	11,222
2008	2,483,153	1,988,485	83,993	4,555,631	2,484,634	1,996,941	79,327	4,560,902	4,666
2009	2,417,214	1,970,088	88,989	4,476,291	2,420,070	1,939,810	79,813	4,439,693	9,176

(1) Overseas residents arriving in New Zealand for a stay of less than 12 months.

(2) New Zealand residents arriving in New Zealand after an absence of less than 12 months.

(3) Includes overseas migrants who arrive in New Zealand intending to stay for a period of 12 months or more (or permanently), plus New Zealand residents returning after an absence of 12 months or more.

(4) Overseas residents departing New Zealand after a stay of less than 12 months.

(5) New Zealand residents departing New Zealand for an absence of less than 12 months.

(6) Includes New Zealand residents departing for an intended period of 12 months or more (or permanently), plus overseas visitors departing New Zealand after a stay of 12 months or more.

(7) Permanent and long-term arrivals minus permanent and long-term departures.

Table 2

International Travel and Migration
By direction and passenger type
 Seasonally adjusted and trend series⁽¹⁾

Month	Arrivals				Departures				Net permanent & long-term migration ⁽⁸⁾	
	Short-term overseas visitors ⁽²⁾	Short-term NZ-resident travellers ⁽³⁾	Permanent & long-term migrants ⁽⁴⁾	Total	Short-term overseas visitors ⁽⁵⁾	Short-term NZ-resident travellers ⁽⁶⁾	Permanent & long-term migrants ⁽⁷⁾	Total		
Series ref: ITM	SVAZS	SRAZS	SPZAS	STZAS	SVDZS	SRDZS	SPZDS	STZDS	SPZNS	
Seasonally adjusted										
2008	Apr	202,840	164,400	7,360	374,600	205,160	163,680	6,890	375,730	460
	May	204,590	166,860	7,820	379,270	203,340	170,090	6,910	380,350	910
	Jun	205,690	173,170	7,510	386,380	208,550	162,010	7,110	377,670	410
	Jul	205,570	159,900	7,580	373,050	204,390	163,570	6,840	374,800	740
	Aug	205,250	166,680	7,750	379,680	206,770	161,970	7,410	376,150	340
	Sep	195,140	163,770	7,060	365,970	191,770	161,300	7,080	360,140	-20
	Oct	195,380	159,750	7,400	362,520	196,430	165,760	7,360	369,560	40
	Nov	197,150	162,940	7,050	367,140	200,810	160,140	7,340	368,290	-280
	Dec	209,900	168,560	7,030	385,490	202,790	159,440	6,710	368,940	320
2009	Jan	195,360	158,460	7,410	361,230	202,800	158,490	6,590	367,880	820
	Feb	200,920	159,410	7,550	367,870	199,740	157,160	5,930	362,830	1,620
	Mar	200,510	163,920	7,490	371,920	200,380	158,120	5,760	364,250	1,740
	Apr	205,410	159,270	7,530	372,220	202,040	160,000	5,370	367,410	2,160
Series ref: ITM	SVAZT	SRAZT	SPZAT	STZAT	SVDZT	SRDZT	SPZDT	STZDT	SPZNT	
Trend										
2008	Apr	205,980	165,920	7,440	379,930	207,180	166,220	6,910	380,340	530
	May	205,570	165,380	7,560	379,600	206,730	165,150	6,950	378,820	610
	Jun	204,750	164,790	7,610	378,460	205,780	164,210	7,020	376,930	590
	Jul	203,490	164,210	7,580	376,450	204,520	163,550	7,110	374,990	470
	Aug	201,790	163,650	7,480	373,640	203,280	163,090	7,200	373,310	270
	Sep	199,860	163,150	7,350	370,280	202,150	162,550	7,260	371,660	90
	Oct	198,070	162,680	7,250	367,140	201,190	161,740	7,220	369,880	20
	Nov	197,130	162,240	7,210	365,440	200,680	160,860	7,070	368,430	140
	Dec	197,390	161,840	7,240	365,480	200,730	159,920	6,800	367,380	440
2009	Jan	198,490	161,500	7,310	366,480	201,030	158,940	6,460	366,540	850
	Feb	199,880	161,230	7,400	367,870	201,250	158,280	6,110	365,860	1,290
	Mar	201,370	161,030	7,490	369,400	201,420	158,050	5,800	365,410	1,690
	Apr	202,710	160,940	7,540	370,650	201,580	158,250	5,510	365,000	2,030

(1) Seasonally adjusted and trend series are revised monthly (refer to the technical notes of this release).

(2) Overseas residents arriving in New Zealand for a stay of less than 12 months.

(3) New Zealand residents arriving in New Zealand after an absence of less than 12 months.

(4) Includes overseas migrants who arrive in New Zealand intending to stay for a period of 12 months or more (or permanently), plus New Zealand residents returning after an absence of 12 months or more.

(5) Overseas residents departing New Zealand after a stay of less than 12 months.

(6) New Zealand residents departing New Zealand for an absence of less than 12 months.

(7) Includes New Zealand residents departing for an intended period of 12 months or more (or permanently), plus overseas visitors departing New Zealand after a stay of 12 months or more.

(8) Permanent and long-term arrivals minus permanent and long-term departures.

Note: Data are independently rounded to the nearest 10.

Table 3

Short-term Overseas Visitor Arrivals⁽¹⁾
By country of last permanent residence

Country of last permanent residence	April month			Year ended April			Change from 2008			
	2007	2008	2009	2007	2008	2009	Month		Year	
							Number	Percent	Number	Percent
Oceania	88,159	83,832	101,398	1,033,952	1,090,976	1,131,278	17,566	21.0	40,302	3.7
Australia	78,108	73,704	90,508	913,276	966,067	992,674	16,804	22.8	26,607	2.8
Cook Islands	897	1,032	946	10,656	11,045	11,323	-86	-8.3	278	2.5
Fiji	1,932	1,800	1,848	21,801	20,055	24,291	48	2.7	4,236	21.1
French Polynesia	1,058	888	1,320	16,474	16,126	18,354	432	48.6	2,228	13.8
New Caledonia	805	768	1,210	11,455	12,057	13,616	442	57.6	1,559	12.9
Samoa	1,495	1,512	1,320	17,728	17,924	19,381	-192	-12.7	1,457	8.1
Tonga	1,334	1,128	1,034	12,326	13,435	13,458	-94	-8.3	23	0.2
Asia	44,735	40,224	37,158	518,236	488,553	431,831	-3,066	-7.6	-56,722	-11.6
China, People's Republic of	10,925	11,352	10,670	115,565	124,750	112,783	-682	-6.0	-11,967	-9.6
Hong Kong (SAR)	1,955	1,272	2,706	23,335	21,969	21,840	1,434	112.7	-129	-0.6
India	1,955	2,160	2,134	20,923	23,159	24,073	-26	-1.2	914	3.9
Indonesia	644	624	704	7,336	7,742	7,838	80	12.8	96	1.2
Japan	8,142	7,200	6,072	129,287	115,547	95,696	-1,128	-15.7	-19,851	-17.2
Korea, Republic of	8,602	6,984	3,806	112,248	90,225	68,035	-3,178	-45.5	-22,190	-24.6
Malaysia	2,300	2,208	1,848	20,369	19,625	18,939	-360	-16.3	-686	-3.5
Philippines	1,012	1,056	968	7,651	9,012	8,639	-88	-8.3	-373	-4.1
Singapore	1,932	1,632	2,024	27,828	26,886	29,086	392	24.0	2,200	8.2
Taiwan	2,231	1,608	1,496	27,700	22,605	17,727	-112	-7.0	-4,878	-21.6
Thailand	4,393	3,504	4,004	18,966	19,559	19,133	500	14.3	-426	-2.2
Europe	31,073	29,376	30,580	518,196	514,086	487,698	1,204	4.1	-26,388	-5.1
Austria	299	360	506	6,455	6,716	6,575	146	40.6	-141	-2.1
Denmark	483	408	440	11,028	11,062	10,397	32	7.8	-665	-6.0
France	1,012	1,200	1,408	19,021	19,399	21,715	208	17.3	2,316	11.9
Germany	2,990	2,784	3,652	58,744	60,752	62,776	868	31.2	2,024	3.3
Ireland	1,357	1,272	1,232	20,350	21,400	19,818	-40	-3.1	-1,582	-7.4
Italy	345	408	374	7,905	8,297	8,112	-34	-8.3	-185	-2.2
Netherlands	989	1,104	946	27,423	25,563	24,982	-158	-14.3	-581	-2.3
Spain	529	432	528	8,307	9,170	9,716	96	22.2	546	6.0
Sweden	713	696	726	11,988	12,617	11,530	30	4.3	-1,087	-8.6
Switzerland	759	696	836	14,677	14,658	14,276	140	20.1	-382	-2.6
United Kingdom	19,849	17,760	17,930	301,651	291,120	263,903	170	1.0	-27,217	-9.3
Americas	22,839	19,296	19,998	294,086	299,959	276,550	702	3.6	-23,409	-7.8
Brazil	828	696	770	9,494	10,962	11,278	74	10.6	316	2.9
Canada	3,151	3,024	3,212	46,773	51,748	49,821	188	6.2	-1,927	-3.7
United States of America	17,710	14,184	14,388	222,784	219,231	196,859	204	1.4	-22,372	-10.2
Africa and the Middle East	2,921	3,720	3,476	40,382	44,235	49,162	-244	-6.6	4,927	11.1
South Africa	1,679	2,328	1,826	19,712	22,736	24,439	-502	-21.6	1,703	7.5
Not stated	2,944	2,616	2,530	32,989	35,142	29,109	-86	-3.3	-6,033	-17.2
Total⁽²⁾	193,229	179,388	195,883	2,446,711	2,483,153	2,417,214	16,495	9.2	-65,939	-2.7

(1) Overseas residents arriving in New Zealand for a stay of less than 12 months.

(2) These totals are actual counts and may differ from the sum of individual figures for different countries that are derived from samples.

Note: SAR Special Administrative Region

Table 4

Short-term New Zealand-resident Traveller Departures⁽¹⁾
By country of main destination

Country of main destination	April month			Year ended April			Change from 2008			
	2007	2008	2009	2007	2008	2009	Month		Year	
							Number	Percent	Number	Percent
Oceania	103,788	99,904	101,322	1,174,161	1,223,798	1,188,503	1,418	1.4	-35,295	-2.9
Australia	84,564	81,480	84,370	936,350	975,522	948,115	2,890	3.5	-27,407	-2.8
Cook Islands	4,023	3,836	4,108	46,871	52,930	54,142	272	7.1	1,212	2.3
Fiji	7,992	7,308	5,798	105,753	96,755	92,959	-1,510	-20.7	-3,796	-3.9
New Caledonia	675	840	546	7,727	11,294	7,990	-294	-35.0	-3,304	-29.3
Samoa	2,646	2,604	3,484	32,576	36,893	39,614	880	33.8	2,721	7.4
Tonga	1,215	1,316	936	15,287	17,303	17,058	-380	-28.9	-245	-1.4
Vanuatu	891	756	754	9,862	12,656	11,881	-2	-0.3	-775	-6.1
Asia	20,034	22,316	19,448	239,230	256,871	247,429	-2,868	-12.9	-9,442	-3.7
China, People's Republic of	4,482	5,320	4,264	53,401	60,032	56,672	-1,056	-19.8	-3,360	-5.6
Hong Kong (SAR)	1,377	1,624	1,404	18,058	19,390	19,237	-220	-13.5	-153	-0.8
India	1,566	1,316	2,132	24,797	26,248	28,440	816	62.0	2,192	8.4
Indonesia	1,053	1,036	962	11,308	11,077	11,216	-74	-7.1	139	1.3
Japan	2,187	2,604	1,742	17,739	20,196	18,680	-862	-33.1	-1,516	-7.5
Korea, Republic of	1,215	1,428	988	15,018	15,275	13,531	-440	-30.8	-1,744	-11.4
Malaysia	1,377	1,260	884	16,714	17,254	17,385	-376	-29.8	131	0.8
Philippines	729	1,176	702	7,053	8,579	9,050	-474	-40.3	471	5.5
Singapore	1,458	1,204	1,144	16,100	15,696	12,872	-60	-5.0	-2,824	-18.0
Taiwan	729	840	754	11,180	11,421	9,487	-86	-10.2	-1,934	-16.9
Thailand	2,268	2,492	2,392	29,532	31,183	28,934	-100	-4.0	-2,249	-7.2
Viet Nam	783	896	780	7,081	8,590	9,329	-116	-12.9	739	8.6
Europe	12,798	14,476	13,364	160,143	178,269	165,493	-1,112	-7.7	-12,776	-7.2
France	999	1,428	1,014	11,621	19,724	13,753	-414	-29.0	-5,971	-30.3
Germany	486	728	936	10,073	10,019	11,114	208	28.6	1,095	10.9
Italy	1,026	1,176	858	10,718	11,961	11,002	-318	-27.0	-959	-8.0
United Kingdom	6,750	7,560	7,696	89,216	96,187	91,664	136	1.8	-4,523	-4.7
Americas	10,341	10,332	10,270	115,432	124,023	126,596	-62	-0.6	2,573	2.1
Canada	1,053	1,288	1,170	16,510	19,284	20,114	-118	-9.2	830	4.3
United States of America	8,100	7,952	7,566	86,802	92,877	92,008	-386	-4.9	-869	-0.9
Africa and the Middle East	2,781	3,304	3,172	29,453	31,478	32,177	-132	-4.0	699	2.2
South Africa	1,080	1,316	1,170	12,506	13,465	11,969	-146	-11.1	-1,496	-11.1
Not stated	13,770	14,028	14,586	159,275	180,357	177,582	558	4.0	-2,775	-1.5
Total⁽²⁾	163,682	164,309	162,384	1,880,121	1,996,941	1,939,810	-1,925	-1.2	-57,131	-2.9

(1) New Zealand residents departing New Zealand for an absence of less than 12 months.

(2) These totals are actual counts and may differ from the sum of individual figures for different countries that are derived from samples.

Note: SAR Special Administrative Region

Table 5

Permanent and Long-term Arrivals⁽¹⁾
By country of last permanent residence

Country of last permanent residence	April month			Year ended April			Change from 2008			
	2007	2008	2009	2007	2008	2009	Month		Year	
							Number	Percent	Number	Percent
Oceania	1,381	1,444	1,634	19,291	19,620	19,939	190	13.2	319	1.6
Australia	967	979	1,189	13,171	13,539	13,278	210	21.5	-261	-1.9
Fiji	204	194	214	2,566	2,824	3,456	20	10.3	632	22.4
Samoa	102	162	117	1,629	1,482	1,527	-45	-27.8	45	3.0
Tonga	60	48	57	930	773	705	9	18.8	-68	-8.8
Asia	1,795	1,879	1,965	21,516	23,614	26,996	86	4.6	3,382	14.3
China, People's Republic of	255	288	348	4,037	4,377	5,440	60	20.8	1,063	24.3
Hong Kong (SAR)	43	33	33	658	543	643	0	0.0	100	18.4
India	255	312	432	3,227	4,923	6,730	120	38.5	1,807	36.7
Japan	437	425	367	2,941	2,529	2,368	-58	-13.6	-161	-6.4
Korea, Republic of	139	117	137	2,069	1,876	1,966	20	17.1	90	4.8
Malaysia	76	48	51	1,571	1,540	1,373	3	6.3	-167	-10.8
Philippines	301	336	334	2,978	3,450	3,729	-2	-0.6	279	8.1
Singapore	52	46	26	628	671	601	-20	-43.5	-70	-10.4
Sri Lanka	23	58	21	298	462	572	-37	-63.8	110	23.8
Taiwan	57	50	52	852	832	764	2	4.0	-68	-8.2
Thailand	60	64	70	1,003	951	851	6	9.4	-100	-10.5
Europe	1,464	1,489	1,502	29,362	26,434	26,973	13	0.9	539	2.0
France	29	42	48	819	938	1,164	6	14.3	226	24.1
Germany	109	147	96	2,346	2,454	2,492	-51	-34.7	38	1.5
Ireland	54	68	112	1,206	1,291	1,507	44	64.7	216	16.7
United Kingdom	1,146	1,055	1,070	21,811	18,772	18,768	15	1.4	-4	0.0
Americas	367	424	385	6,414	6,788	7,323	-39	-9.2	535	7.9
Argentina	48	77	44	312	451	531	-33	-42.9	80	17.7
Canada	80	74	74	1,589	1,564	1,826	0	0.0	262	16.8
Chile	45	49	47	434	532	531	-2	-4.1	-1	-0.2
United States of America	171	194	159	3,595	3,593	3,625	-35	-18.0	32	0.9
Africa and the Middle East	242	474	368	3,770	5,205	5,848	-106	-22.4	643	12.4
Saudi Arabia	21	82	61	191	612	761	-21	-25.6	149	24.3
South Africa	121	256	157	1,947	2,574	2,924	-99	-38.7	350	13.6
United Arab Emirates	8	7	27	240	306	373	20	285.7	67	21.9
Not stated	136	149	121	2,063	2,332	1,910	-28	-18.8	-422	-18.1
Total	5,385	5,859	5,975	82,416	83,993	88,989	116	2.0	4,996	5.9

(1) Includes overseas migrants who arrive in New Zealand intending to stay for a period of 12 months or more (or permanently), plus New Zealand residents returning after an absence of 12 months or more.

Note: SAR Special Administrative Region

Table 6

Permanent and Long-term Departures⁽¹⁾
By country of next permanent residence

Country of next permanent residence	April month			Year ended April			Change from 2008			
	2007	2008	2009	2007	2008	2009	Month		Year	
							Number	Percent	Number	Percent
Oceania	3,599	4,310	2,976	38,830	46,062	47,360	-1,334	-31.0	1,298	2.8
Australia	3,476	4,171	2,827	37,177	44,114	45,314	-1,344	-32.2	1,200	2.7
Fiji	20	16	28	283	298	396	12	75.0	98	32.9
Samoa	24	44	42	432	552	585	-2	-4.5	33	6.0
Tonga	18	17	7	194	204	231	-10	-58.8	27	13.2
Asia	651	672	652	8,973	9,388	9,531	-20	-3.0	143	1.5
China, People's Republic of	154	189	145	2,411	2,436	2,228	-44	-23.3	-208	-8.5
Hong Kong (SAR)	29	48	32	447	490	394	-16	-33.3	-96	-19.6
India	65	72	71	637	714	764	-1	-1.4	50	7.0
Japan	116	106	125	1,422	1,336	1,267	19	17.9	-69	-5.2
Korea, Republic of	101	93	89	1,743	1,888	2,137	-4	-4.3	249	13.2
Malaysia	32	35	39	461	533	696	4	11.4	163	30.6
Philippines	11	10	25	121	152	218	15	150.0	66	43.4
Singapore	36	29	23	420	418	425	-6	-20.7	7	1.7
Sri Lanka	1	5	1	38	38	37	-4	-80.0	-1	-2.6
Taiwan	23	19	17	308	333	344	-2	-10.5	11	3.3
Thailand	36	28	40	369	386	416	12	42.9	30	7.8
Europe	1,770	1,513	1,300	15,735	15,846	14,315	-213	-14.1	-1,531	-9.7
France	35	63	49	459	550	531	-14	-22.2	-19	-3.5
Germany	51	78	98	747	840	989	20	25.6	149	17.7
Ireland	87	70	48	909	837	674	-22	-31.4	-163	-19.5
United Kingdom	1,433	1,140	913	11,895	11,676	10,193	-227	-19.9	-1,483	-12.7
Americas	392	389	403	4,708	4,888	5,453	14	3.6	565	11.6
Argentina	6	14	18	95	120	138	4	28.6	18	15.0
Canada	142	147	152	1,505	1,507	1,775	5	3.4	268	17.8
Chile	16	12	28	131	161	276	16	133.3	115	71.4
United States of America	206	181	163	2,535	2,543	2,614	-18	-9.9	71	2.8
Africa and the Middle East	114	140	137	1,574	1,832	2,105	-3	-2.1	273	14.9
Saudi Arabia	8	7	15	91	129	130	8	114.3	1	0.8
South Africa	22	22	37	358	310	339	15	68.2	29	9.4
United Arab Emirates	39	62	24	482	712	819	-38	-61.3	107	15.0
Not stated	115	103	81	1,374	1,311	1,049	-22	-21.4	-262	-20.0
Total	6,641	7,127	5,549	71,194	79,327	79,813	-1,578	-22.1	486	0.6

(1) Includes New Zealand residents departing for an intended period of 12 months or more (or permanently), plus overseas visitors departing New Zealand after a stay of 12 months or more.

Note: SAR Special Administrative Region

Table 7

Net Permanent and Long-term Migration⁽¹⁾
By country of last/next permanent residence

Country of last/next permanent residence	April month ⁽²⁾			Year ended April ⁽²⁾			Change from 2008	
	2007	2008	2009	2007	2008	2009	Month	Year
Oceania	-2,218	-2,866	-1,342	-19,539	-26,442	-27,421	1,524	-979
Australia	-2,509	-3,192	-1,638	-24,006	-30,575	-32,036	1,554	-1,461
Fiji	184	178	186	2,283	2,526	3,060	8	534
Samoa	78	118	75	1,197	930	942	-43	12
Tonga	42	31	50	736	569	474	19	-95
Asia	1,144	1,207	1,313	12,543	14,226	17,465	106	3,239
China, People's Republic of	101	99	203	1,626	1,941	3,212	104	1,271
Hong Kong (SAR)	14	-15	1	211	53	249	16	196
India	190	240	361	2,590	4,209	5,966	121	1,757
Japan	321	319	242	1,519	1,193	1,101	-77	-92
Korea, Republic of	38	24	48	326	-12	-171	24	-159
Malaysia	44	13	12	1,110	1,007	677	-1	-330
Philippines	290	326	309	2,857	3,298	3,511	-17	213
Singapore	16	17	3	208	253	176	-14	-77
Sri Lanka	22	53	20	260	424	535	-33	111
Taiwan	34	31	35	544	499	420	4	-79
Thailand	24	36	30	634	565	435	-6	-130
Europe	-306	-24	202	13,627	10,588	12,658	226	2,070
France	-6	-21	-1	360	388	633	20	245
Germany	58	69	-2	1,599	1,614	1,503	-71	-111
Ireland	-33	-2	64	297	454	833	66	379
United Kingdom	-287	-85	157	9,916	7,096	8,575	242	1,479
Americas	-25	35	-18	1,706	1,900	1,870	-53	-30
Argentina	42	63	26	217	331	393	-37	62
Canada	-62	-73	-78	84	57	51	-5	-6
Chile	29	37	19	303	371	255	-18	-116
United States of America	-35	13	-4	1,060	1,050	1,011	-17	-39
Africa and the Middle East	128	334	231	2,196	3,373	3,743	-103	370
Saudi Arabia	13	75	46	100	483	631	-29	148
South Africa	99	234	120	1,589	2,264	2,585	-114	321
United Arab Emirates	-31	-55	3	-242	-406	-446	58	-40
Not stated	21	46	40	689	1,021	861	-6	-160
Total	-1,256	-1,268	426	11,222	4,666	9,176	1,694	4,510

(1) Net permanent and long-term (PLT) migration is derived by subtracting PLT departures from PLT arrivals. PLT arrivals include overseas migrants who arrive in New Zealand intending to stay for a period of 12 months or more (or permanently), plus New Zealand residents returning after an absence of 12 months or more. PLT departures include New Zealand residents departing for an intended period of 12 months or more (or permanently), plus overseas visitors departing New Zealand after a stay of 12 months or more.

(2) A minus sign indicates an excess of departures over arrivals.

Note: SAR Special Administrative Region

Table 8

Permanent and Long-term Migration
By country of citizenship

Period	Country of citizenship								
	New Zealand			Non-New Zealand			Total		
	Arrivals ⁽¹⁾	Departures ⁽²⁾	Net ⁽³⁾	Arrivals ⁽¹⁾	Departures ⁽²⁾	Net ⁽³⁾	Arrivals ⁽¹⁾	Departures ⁽²⁾	Net ⁽³⁾
To/from all countries⁽⁴⁾									
April month									
1999	1,373	4,881	-3,508	3,026	1,292	1,734	4,399	6,173	-1,774
2000	1,423	5,209	-3,786	3,212	1,314	1,898	4,635	6,523	-1,888
2001	1,400	4,980	-3,580	4,129	1,237	2,892	5,529	6,217	-688
2002	1,546	4,077	-2,531	5,502	1,229	4,273	7,048	5,306	1,742
2003	1,784	3,067	-1,283	4,747	1,267	3,480	6,531	4,334	2,197
2004	1,496	3,683	-2,187	3,749	1,631	2,118	5,245	5,314	-69
2005	1,686	4,619	-2,933	4,006	1,806	2,200	5,692	6,425	-733
2006	1,567	4,306	-2,739	3,933	1,591	2,342	5,500	5,897	-397
2007	1,366	5,049	-3,683	4,019	1,592	2,427	5,385	6,641	-1,256
2008	1,433	5,352	-3,919	4,426	1,775	2,651	5,859	7,127	-1,268
2009	1,689	3,758	-2,069	4,286	1,791	2,495	5,975	5,549	426
Year ended April									
1999	20,372	51,368	-30,996	36,363	16,063	20,300	56,735	67,431	-10,696
2000	22,633	54,785	-32,152	38,692	15,641	23,051	61,325	70,426	-9,101
2001	21,148	63,270	-42,122	46,211	15,489	30,722	67,359	78,759	-11,400
2002	24,541	46,837	-22,296	65,343	14,982	50,361	89,884	61,819	28,065
2003	26,385	39,757	-13,372	71,769	16,350	55,419	98,154	56,107	42,047
2004	26,970	40,360	-13,390	59,217	20,115	39,102	86,187	60,475	25,712
2005	24,917	46,239	-21,322	53,594	22,923	30,671	78,511	69,162	9,349
2006	24,115	47,985	-23,870	55,818	21,873	33,945	79,933	69,858	10,075
2007	23,466	50,588	-27,122	58,950	20,606	38,344	82,416	71,194	11,222
2008	22,902	57,359	-34,457	61,091	21,968	39,123	83,993	79,327	4,666
2009	24,476	56,585	-32,109	64,513	23,228	41,285	88,989	79,813	9,176
To/from Australia⁽⁵⁾									
April month									
1999	481	2,541	-2,060	273	280	-7	754	2,821	-2,067
2000	564	3,031	-2,467	348	309	39	912	3,340	-2,428
2001	590	2,621	-2,031	342	308	34	932	2,929	-1,997
2002	609	2,066	-1,457	394	247	147	1,003	2,313	-1,310
2003	719	1,552	-833	368	235	133	1,087	1,787	-700
2004	675	1,870	-1,195	407	265	142	1,082	2,135	-1,053
2005	668	2,780	-2,112	416	377	39	1,084	3,157	-2,073
2006	655	2,483	-1,828	385	326	59	1,040	2,809	-1,769
2007	566	3,095	-2,529	401	381	20	967	3,476	-2,509
2008	606	3,816	-3,210	373	355	18	979	4,171	-3,192
2009	784	2,507	-1,723	405	320	85	1,189	2,827	-1,638
Year ended April									
1999	6,423	27,491	-21,068	3,710	3,335	375	10,133	30,826	-20,693
2000	6,929	32,311	-25,382	3,788	3,584	204	10,717	35,895	-25,178
2001	6,950	38,452	-31,502	3,860	3,504	356	10,810	41,956	-31,146
2002	8,376	24,865	-16,489	4,334	3,253	1,081	12,710	28,118	-15,408
2003	8,886	21,039	-12,153	4,587	3,082	1,505	13,473	24,121	-10,648
2004	9,378	22,794	-13,416	5,283	3,254	2,029	14,661	26,048	-11,387
2005	8,454	28,206	-19,752	5,425	3,859	1,566	13,879	32,065	-18,186
2006	8,218	29,801	-21,583	5,170	3,996	1,174	13,388	33,797	-20,409
2007	8,229	32,775	-24,546	4,942	4,402	540	13,171	37,177	-24,006
2008	8,459	39,459	-31,000	5,080	4,655	425	13,539	44,114	-30,575
2009	8,569	40,478	-31,909	4,709	4,836	-127	13,278	45,314	-32,036

(1) For a definition of permanent and long-term arrivals, see table 5.

(2) For a definition of permanent and long-term departures, see table 6.

(3) A minus sign indicates an excess of departures over arrivals.

(4) Figures to/from all countries are derived from the ITM INFOS series SP1AZZZ0NZ, SP1DZZZ0NZ, SP1NZZZ0NZ, SP1AZZZZZ, SP1DZZZZZZ and SP1NZZZZZZ, eg arrivals of non-New Zealand citizens is SP1AZZZZZZ minus SP1AZZZ0NZ.

(5) Figures to/from Australia are derived from the ITM INFOS series SP1A1AU0NZ, SP1D1AU0NZ, SP1N1AU0NZ, SP1A1AUZZZ, SP1D1AUZZZ and SP1N1AUZZZ.