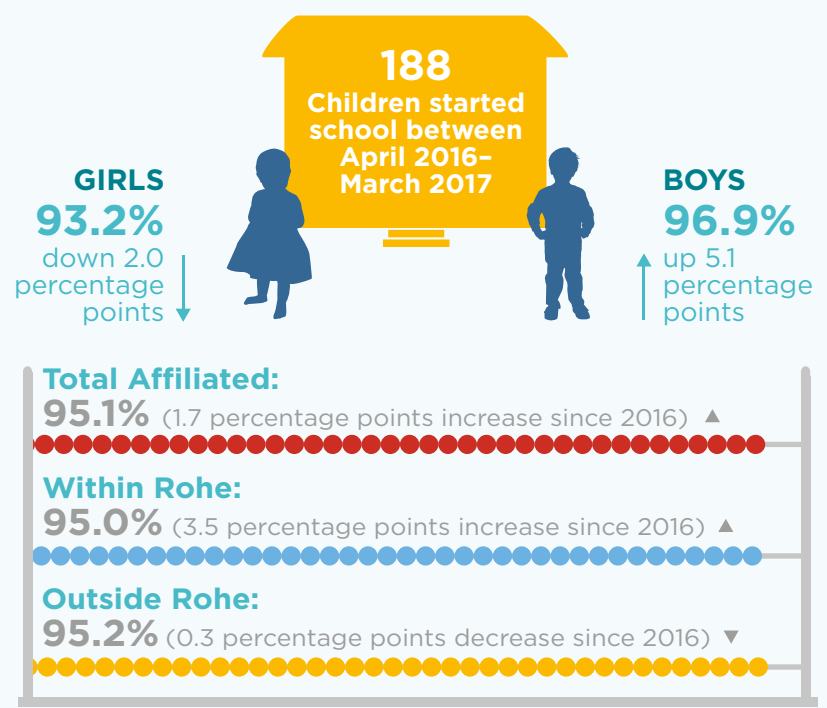


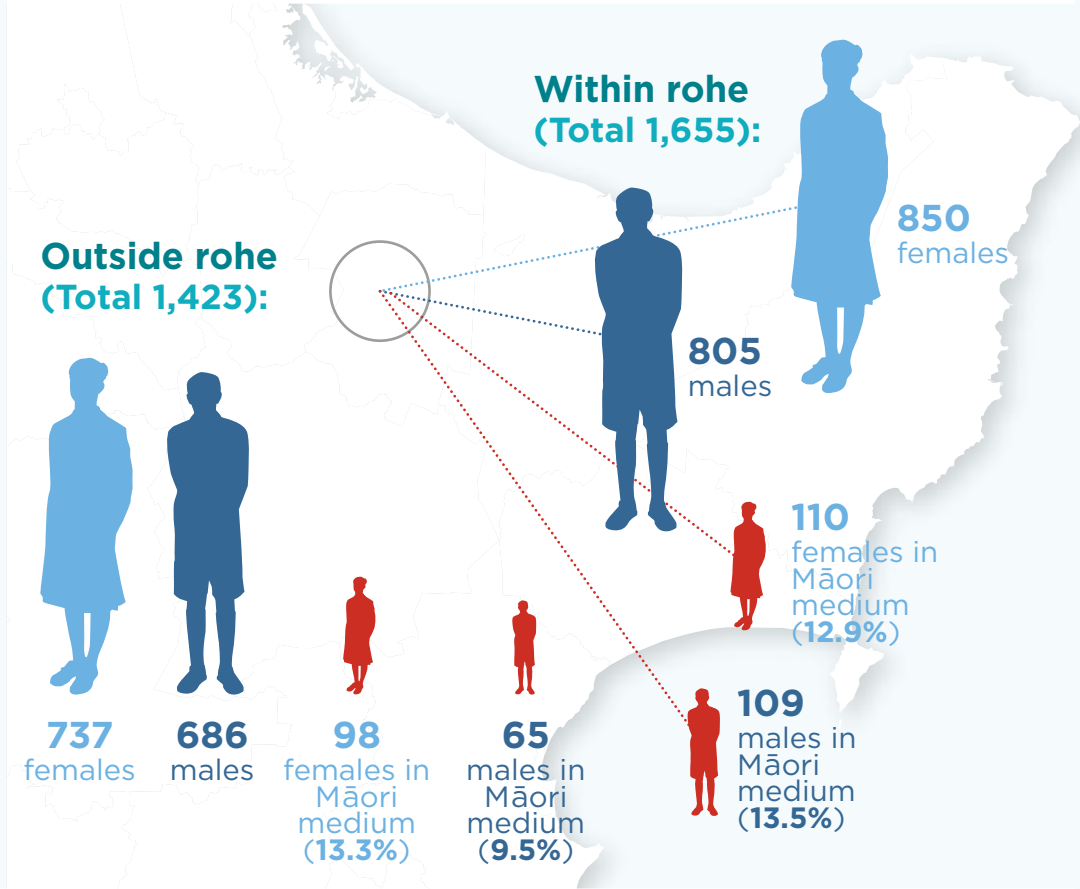
# NGĀTI WHAKAUE

## Education Profile: Affiliation

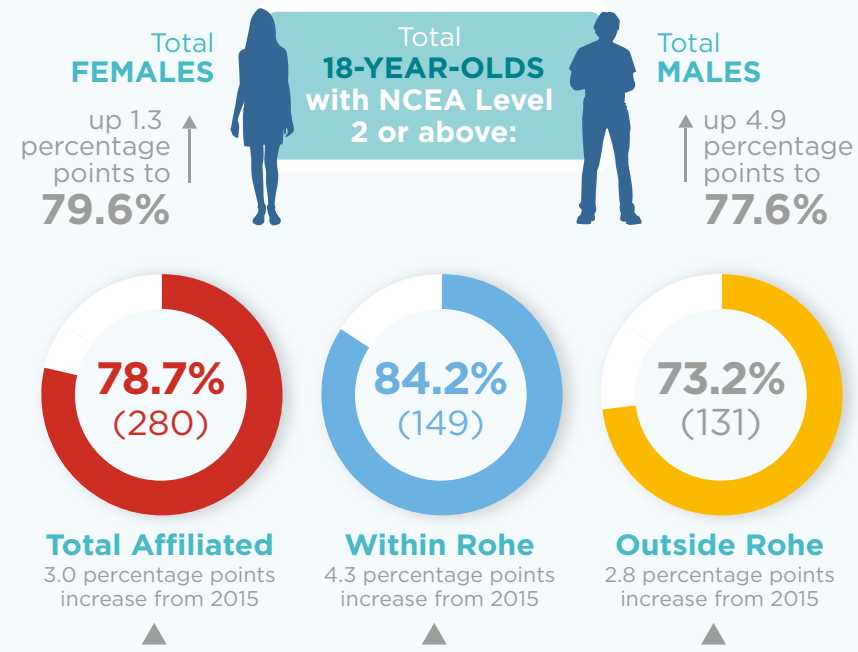
### EARLY CHILDHOOD EDUCATION (AGES 0-6) Prior Participation, March 2017



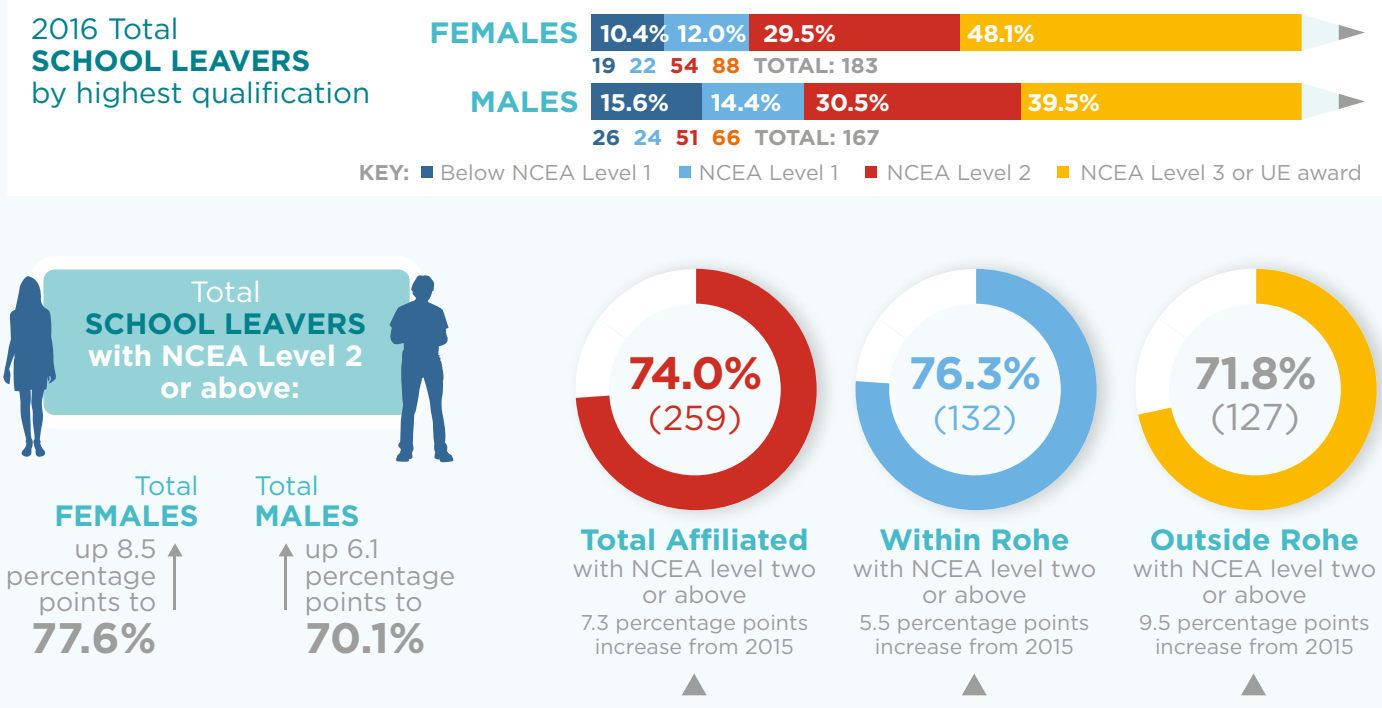
### OF THE SCHOOL STUDENTS AFFILIATED WITH Ngāti Whakaue in 2017, there were...



### SECONDARY/TERTIARY (AGE 18 YEARS) 18-year-olds, 2016



### SECONDARY (AGES 13-18) School Leavers, 2016



### NGĀTI WHAKAUE

This education profile presents the participation and attainment information for Ngāti Whakaue.

This side of the education profile looks at the students identified as affiliating with Ngāti Whakaue, regardless of geographical location. Students who affiliate with more than one iwi are only counted once in this profile. Please note that there are a small number of students for whom iwi affiliation information is not available.

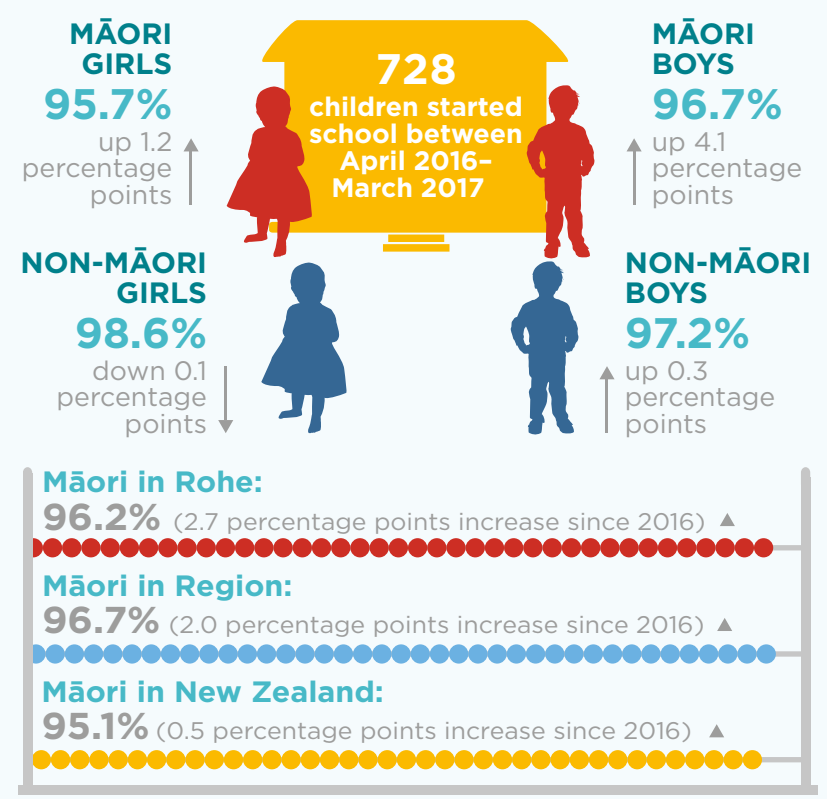
The reverse of this education profile looks at students who attended one of the 27 schools within the Ngāti Whakaue rohe, regardless of whether the student has a personal affiliation with Ngāti Whakaue.



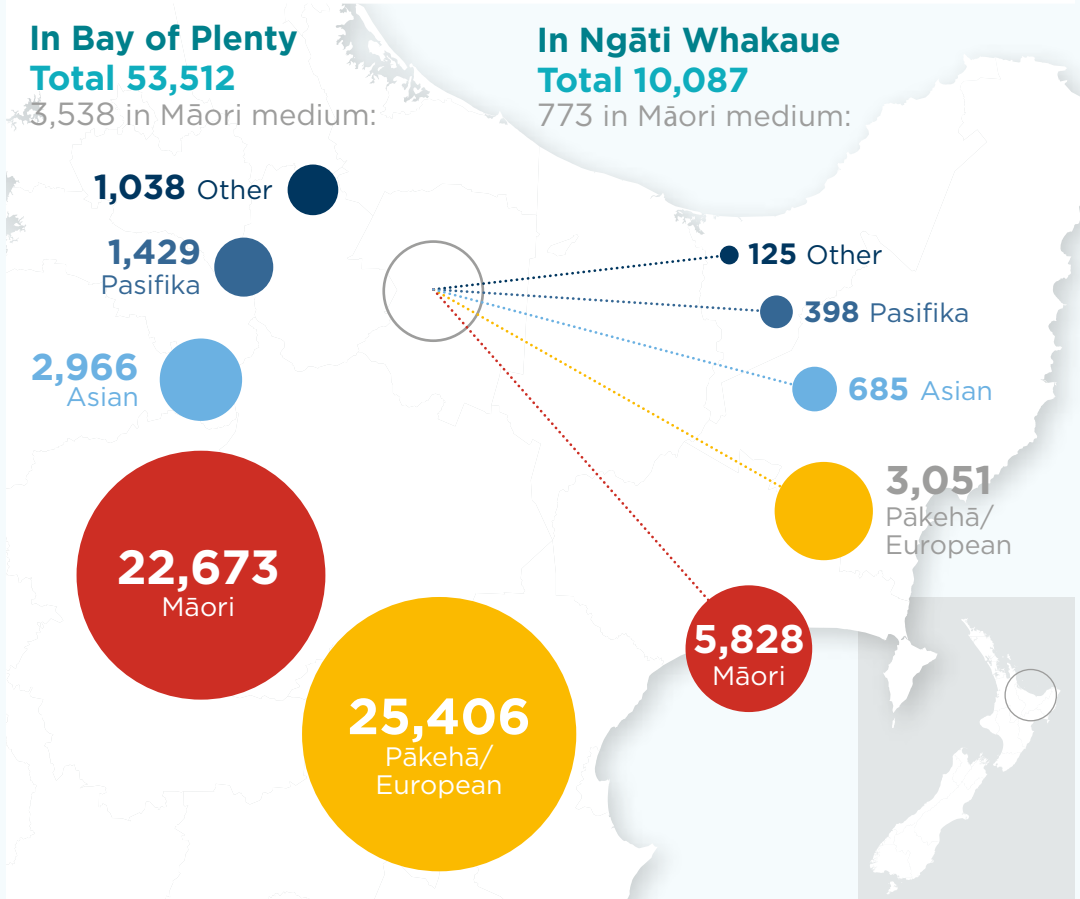
# NGĀTI WHAKAUE

Education Profile: Rohe

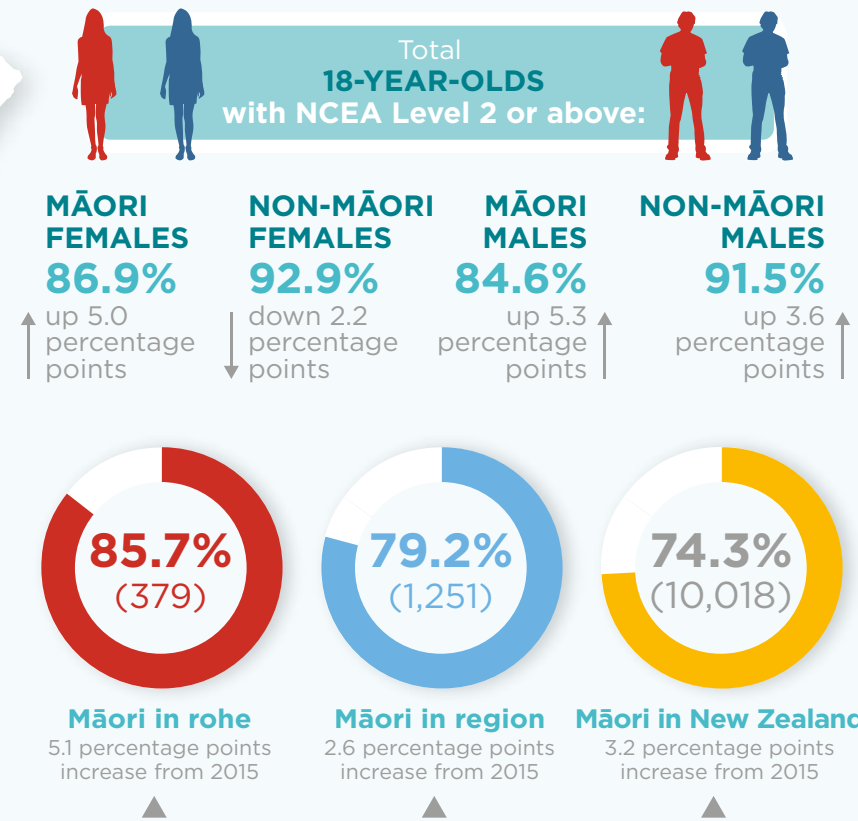
## EARLY CHILDHOOD EDUCATION (AGES 0-6) Prior Participation, March 2017



## Number of school students in 2017...

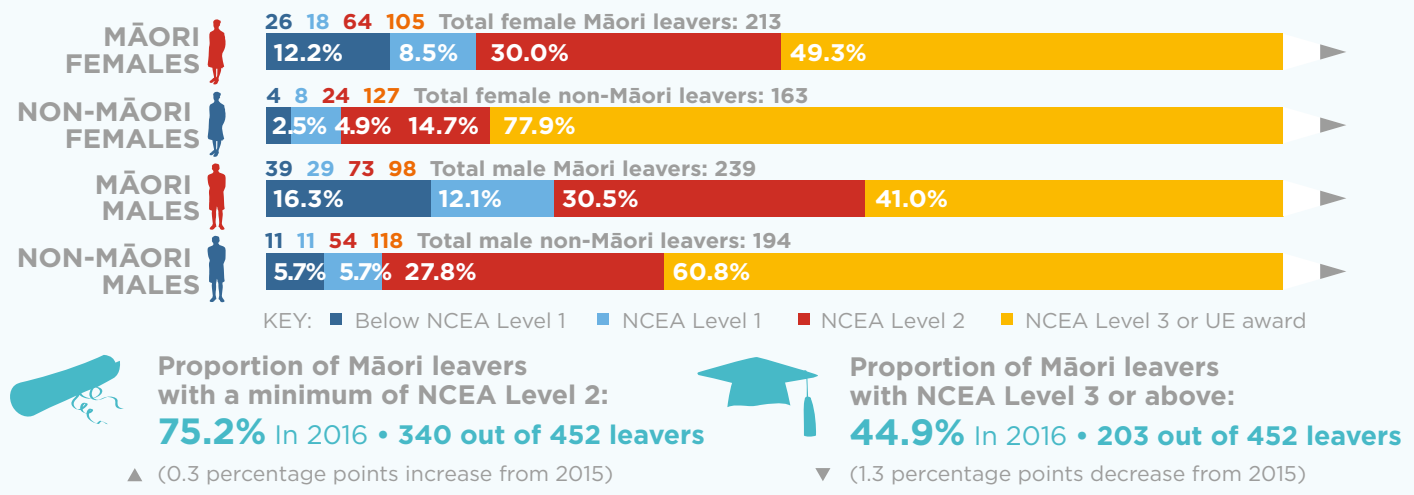


## SECONDARY/TERTIARY (AGE 18 YEARS) 18-year-olds, 2016

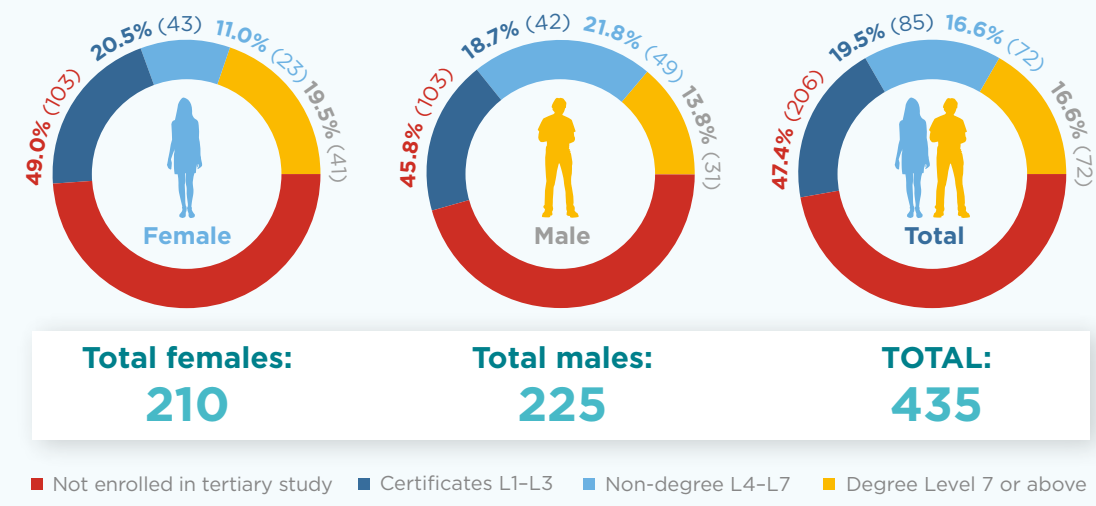


## SECONDARY (AGES 13-18) School Leavers, 2016 by highest qualification

REPORTED NUMBERS BASED ON 8 SCHOOLS WITH LEAVERS



## Māori School Leaver Destinations, 2016



## SCHOOL LEAVER DESTINATIONS

These describe the level of tertiary study undertaken by domestic students in the 12 months after they leave school.

Tertiary study includes: study towards NCEA Levels 1-3 at community providers, industry training, modern apprenticeships, enrolment in diploma courses (non-degree level 4-7), and enrolment in degree courses (level 7 or above).

These are the tertiary destinations in 2016 of 2015 School leavers.