

When rising tides don't lift all boats

Household Income Growth since 2008

- Disposable household incomes have grown by an inflation-adjusted figure of around \$6 billion since the 2008/09 recession.
- However, income changes to household groups have been uneven. The mortgage belt and tax payers received the largest disposable income boosts, while income from savings and business sources has gone backwards.
- Tax cuts and Government welfare payments have been a major source of aggregate household income growth.
- Over the next few years, we expect the profile of household income growth to change. The Government can no longer afford tax cuts and rising interest rates will benefit savers at the mortgage belt's expense. In addition, reinsurance funds associated with the Canterbury rebuild will be a major new source of income.

Real disposable household incomes have risen despite the 2008/09 recession...

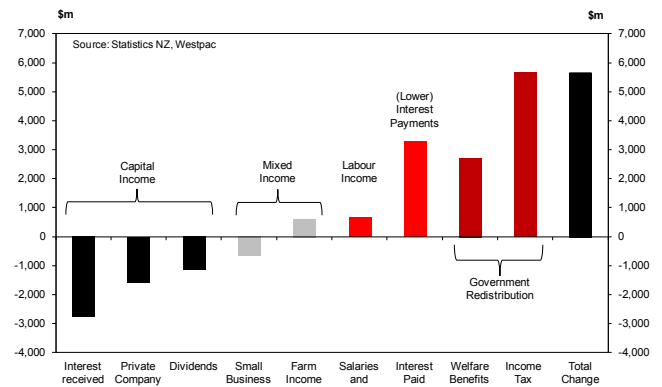
Statistics New Zealand's income measure of GDP shows that real gross disposable household incomes increased by \$5.7 billion since the 2008/09 recession (Figure 1). This is a major step down from the stellar income growth of the mid 2000s, but is not too different from the growth experienced over the 1990s and early 2000s (see the black line in Figure 2).

The increase in household incomes is effectively thanks to the Government, via \$6.3 billion worth of tax cuts and \$2.7 billion worth of welfare benefit payments. Lower interest payments also contributed to the increase in household incomes. Increases in wages, salaries and farm incomes made small, but positive, contributions to household incomes.

In contrast, income from capital dived. Income from businesses (private company profits, dividends and small businesses other than farms) fell \$3.3 billion, while interest received by households fell \$2.7 billion.

Statistics NZ releases three breakdowns of GDP – production, expenditure and income. The income measure is rather unloved because it is released with such a long delay. We have given the series for the household sector a bit of TLC, using it to look at how gross disposable incomes by major source have changed at an aggregate level since the 2008/09 recession. The data have been adjusted for inflation. Note that total change includes

Figure 1: Contributions to change in real gross disposable household incomes, 2008 to 2012



income from other sources not shown in Figure 1.

However, this analysis does not extend to how these incomes were spent or saved, so only captures one side of aggregate household welfare. Also, note from this point we use 'household incomes' as shorthand for 'real gross disposable household incomes' to help prevent the reader from getting too tongue-tied.

...though the distribution of income has changed

Interest rate falls have re-distributed aggregate household income from savers to borrowers. Interest payments fell by \$3.3 billion¹, more than offsetting the \$2.7 billion fall in interest received. The small net difference (+\$0.6 billion) reflects that New Zealand households have borrowed more than they saved as well as the different maturity profile of household deposits and loans.

The mortgage belt have benefitted most from the lower interest bill as mortgages account for over 90% of household borrowing.

\$6.3 billion boost to household incomes from tax cuts

Tax cuts lifted household incomes by \$6.3 billion since the 2008/09 recession. This period includes tax cuts by both the Labour Government (in 2008) and the National Government (in 2010). Partially offsetting the tax cuts were higher tax payments, owing to an increase in taxable household incomes and some tax payers moving into higher tax brackets. Overall, the net effect of lower tax payments lifted household incomes by \$5.7 billion.

Welfare benefit payments added a further \$2.7 billion to household incomes. Most of this increase was due to an additional 70,000 people turning 65, and thus becoming eligible

¹ Lower interest payments are defined as "income" by Statistics New Zealand because they free up money for households to spend or save.

for New Zealand Superannuation (NZS). Also, the number of Unemployment Benefit, Domestic Purposes Benefit, and Accommodation Supplement recipients increased. At the same time, NZS recipients benefitted as tax cuts lead to higher NZS payment rates.

Fiscal policy has effectively softened the blow from the shock to household capital and labour incomes following the recession.

...but it is payback time over the next few years

We expect that our call for rising interest rates from the late this year will begin to cramp the mortgage belt's style over the next few years. At the same time, savers' incomes will make a comeback roughly equal in magnitude (shorter average deposit terms may mean that savers' incomes rise faster initially).

With the Government looking to return to surplus and unable to afford further tax cuts, the Government will subtract from

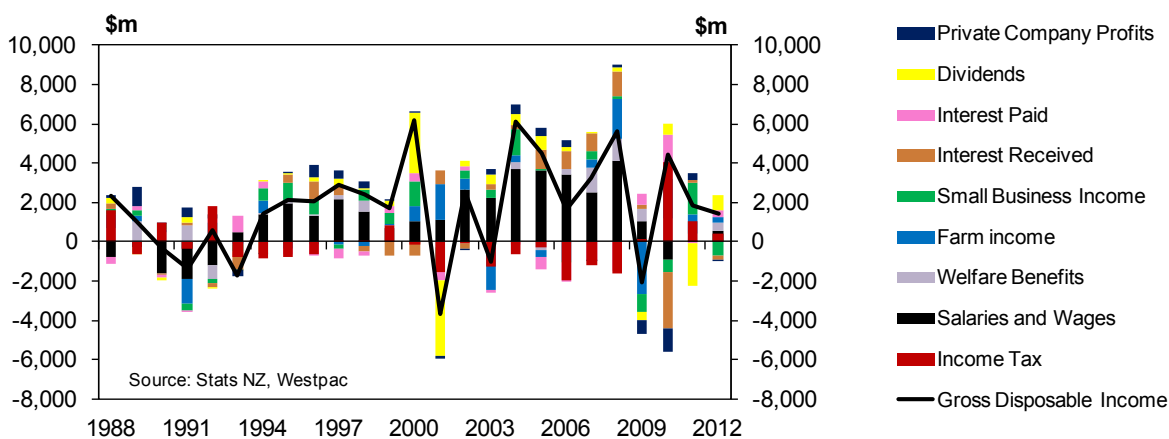
household incomes over the next few years. As the economy grows in 2013 and 2014, we expect tax payments to rise in line with rising taxable household incomes. Welfare payments will continue to rise, mainly as more baby-boomers turn 65, but by less than the increase in tax payments.

At the same time, insurance money will fund much of the Canterbury rebuild, boosting GDP growth and household incomes more generally. In particular, this growth will lift wages, salaries as well as business owners' incomes.

As we have seen before, rising household income growth may not be even. Figure 2 below shows how the distribution of income has changed over history. No doubt household incomes will continue to evolve over time, sometimes in mysterious ways.

Nathan Penny
Economist

Figure 2: Contributions to annual change in real gross disposable household incomes



Contact Details

Dominick Stephens , Chief Economist	Ph: (64-9) 336 5671	dominick_stephens@westpac.co.nz
Michael Gordon , Senior Economist	Ph: (64-9) 336 5670	michael_gordon@westpac.co.nz
Felix Delbrück , Senior Economist	Ph: (64-9) 336 5668	felix_delbruck@westpac.co.nz
Nathan Penny , Economist	Ph: (64-9) 336 5669	nathan_penny@westpac.co.nz

This information has been prepared by Westpac Institutional Bank, a division of Westpac Banking Corporation, ABN 33 007 457 141 incorporated in Australia ("Westpac") and is current as at [29 January 2013]. It is subject to change without notice but Westpac is not obliged to update or correct it. Recipients should not forward or reproduce (in whole or part) this information unless Westpac consents however Westpac accepts no liability for the actions of third parties in this respect. This information does not constitute investment advice or an offer to subscribe for any financial instrument or to enter into a legally binding contract. It has been prepared without taking account of your personal objectives, financial situation or needs. You should seek your own independent legal and/or financial advice before proceeding with any investment decision. Any forecasts given are predictive only and past performance is not a reliable indicator of future performance and may be affected by known or unknown risks and uncertainties. Except to the extent that such liability under any law cannot be excluded, Westpac makes no representation or warranty, express or implied, and does not assume any responsibility or liability for this information or any errors or omissions to it.

The distribution and use of this information may be restricted by law in certain jurisdictions. Persons who receive this information should inform themselves about them and observe any such restrictions: If you are reading this in New Zealand: Westpac's current disclosure statement for the New Zealand division of Westpac Banking Corporation ABN 33 007 457 141 or Westpac New Zealand Limited can be obtained from any branch of Westpac New Zealand Limited or free of charge, at the internet address www.westpac.co.nz. Westpac Institutional Bank products and services are provided by either Westpac Banking Corporation ABN 33 007 457 141 incorporated in Australia (New Zealand division) or Westpac New Zealand Limited. For further information please refer to the Product Disclosure Statement (available from your Relationship Manager) for any product for which a Product Disclosure Statement is required, or applicable customer agreement. Download the Westpac NZ QFE Group Financial Advisers Act 2008 Disclosure Statement. <http://www.westpac.co.nz/assets/Who-we-are/About-Westpac-NZ/QFE-Group-Financial-Advisers-Act-Disclosure-Statement.pdf>

If you are reading this in the United Kingdom: Westpac Banking Corporation is registered in England as a branch (branch number BR000106) and is authorised and regulated by The Financial Services Authority. Westpac Europe Limited is a company registered in England (number 05660023) and is authorised and regulated by The Financial Services Authority. This communication is directed at a) persons who have professional experience in matters relating to investments falling within Article 19(1) of the Financial Services Act 2000 (Financial Promotion) Order 2005 or (b) high net worth entities, and other persons to whom it may otherwise be lawfully communicated, falling within Article 49(1) of the Order (all such persons together being referred to as "relevant persons"). The investments to which this document relates are only available to and any invitation, offer or agreement to subscribe, purchase or otherwise acquire such investments will be engaged in only with, relevant persons. Any person who is not a relevant person should not act or rely upon this document or any of its contents. In the same way, the information contained in this document is intended for "eligible counterparties" and "professional clients" as defined by the rules of the Financial Services Authority and is not intended for "retail clients". With this in mind, Westpac expressly prohibits you from passing on this document to any third party. In particular this communication and any copy of it may not be taken, transmitted or distributed, directly or indirectly into any restricted jurisdiction.

If you are reading this in Australia: This document is provided to you solely for your own use and in your capacity as a wholesale client of Westpac. Australian customers can obtain Westpac's financial services guide by calling 132 032, visiting www.westpac.com.au or visiting any Westpac Branch.

If you are reading this in Singapore: This document is provided to you solely for your own use and in your capacity as a wholesale client of Westpac. Westpac Singapore Branch holds a wholesale banking licence and is subject to supervision by the Monetary Authority of Singapore. Westpac Hong Kong Branch holds a banking license and is subject to supervision by the Hong Kong Monetary Authority. Westpac Shanghai and Beijing Branches hold banking licenses and are subject to supervision by the China Regulatory Banking Commission.

If you are reading this in the United States: Westpac operates in the United States of America as a federally licensed branch, regulated by the Office of the Comptroller of the Currency. Westpac is also registered with the US Commodity Futures Trading Commission ("CFTC") as a Swap Dealer, but is neither registered as, or affiliated with, a Futures Commission Merchant registered with the US CFTC. Westpac Capital Markets, LLC ("WCM"), a wholly-owned subsidiary of Westpac, is a broker-dealer registered under the U.S. Securities Exchange Act of 1934 ("the Exchange Act") and member of the Financial Industry Regulatory Authority ("FINRA"). If this report is distributed in the United States, such distribution is done under Rule 15a-6 of the Exchange Act by WCM, which accepts responsibility for its content. All disclaimers set out with respect to Westpac apply equally to WCM.