

## Number of Sales, Farms - 3 year comparison

District	Jan 2011	Jan 2012	Dec 2012	Jan 2013
Northland	20	22	22	26
Auckland	10	21	40	40
Waikato	25	50	53	67
Bay of Plenty	20	20	16	17
Gisborne	3	8	12	13
Hawkes Bay	13	15	12	13
Taranaki	19	29	26	31
Manawatu/Wanganui	18	31	34	31
Wellington	3	8	11	8
Nelson	7	9	32	30
West Coast	6	5	6	6
Canterbury	37	69	61	60
Otago	16	29	27	26
Southland	22	38	30	31
New Zealand Total	219	354	382	399

## Number of Sales, Lifestyle - 3 year comparison

District	Jan 2011	Jan 2012	Dec 2012	Jan 2013
Northland	81	91	121	118
Auckland	158	231	361	327
Waikato	128	155	214	193
Bay of Plenty	81	78	116	111
Gisborne	14	11	10	14
Hawkes Bay	38	62	61	58
Taranaki	30	31	49	46
Manawatu/Wanganui	78	96	135	115
Wellington	61	54	93	89
Nelson	51	66	78	79
West Coast	15	9	13	13
Canterbury	146	234	245	234
Otago	59	70	75	67
Southland	45	43	47	40
New Zealand Total	985	1231	1618	1504

## Number of Sales - Comparison of All Rural Sales by Type for New Zealand

Rural Property Type	Jan 2011	Jan 2012	Dec 2012	Jan 2013
Arable	11	17	20	13
Dairy	46	58	63	82
Finishing	21	64	64	69
Forestry	14	7	9	7
Grazing	92	182	172	176
Horticulture	28	17	34	36
Special	7	9	20	16
Total All Farms	219	354	382	399
Lifestyle	985	1231	1618	1504

## Number of Sales - Farms by Type

District	Arable	Dairy	Finishing	Forestry	Grazing	Horticulture	Special	All Farms	Lifestyle
Northland	0	3	1	0	16	4	2	26	118
Auckland	0	4	8	0	23	4	1	40	327
Waikato	2	36	8	0	21	0	0	67	193
Bay of Plenty	0	3	0	0	8	6	0	17	111
Gisborne	0	0	2	0	2	9	0	13	14
Hawkes Bay	0	1	5	2	2	2	1	13	58
Taranaki	0	14	3	1	12	0	1	31	46
Manawatu/Wanganui	2	6	7	1	15	0	0	31	115
Wellington	2	0	2	0	3	1	0	8	89
Nelson	0	0	2	1	11	9	7	30	79
West Coast	0	3	0	0	3	0	0	6	13
Canterbury	6	6	12	1	33	0	2	60	234
Otago	1	1	3	1	18	1	1	26	67
Southland	0	5	16	0	9	0	1	31	40
New Zealand	13	82	69	7	176	36	16	399	1504

## Median Farm Size ha. - Comparison of All Farm Sales by Type for New Zealand

Rural Property Type	Jan 2011	Jan 2012	Dec 2012	Jan 2013
Arable	31	104	62	69
Dairy	108	141	90	98
Finishing	95	80	98	78
Forestry	127	95	41	34
Grazing	91	84	60	68
Horticulture	5	5	9	9
Special	20	37	50	61
Total All Farms	75	90	66	70

## Median Farm Size ha. - Farms by Type

District	Arable	Dairy	Finishing	Forestry	Grazing	Horticulture	Special	All Farms
Northland		148	25		77	9	48	64
Auckland		151	35		43	4	3	43
Waikato	46	83	113		49			70
Bay of Plenty		202			78	6		30
Gisborne			285		381	7		9
Hawkes Bay		464	238	92	127	52	64	96
Taranaki		75	180	68	58		2,401	75
Manawatu/Wanganui	50	91	48	258	145			85
Wellington	41		206		204	20		92
Nelson			476	20	51	11	124	33
West Coast		136			122			129
Canterbury	204	192	81	20	89		60	119
Otago	59	145	307	34	111	13	13	111
Southland		201	83		81		58	95
New Zealand	69	98	78	34	68	9	61	70

## Median Selling Price Per Hectare (3 month) - Comparison of All Rural Sales by District and Type

Rural Property Type	Jan 2011	Jan 2012	Dec 2012	Jan 2013
<b>New Zealand</b>				
Arable	\$26,290	\$21,750	\$24,929	\$24,752
Dairy	\$35,090	\$34,298	\$34,483	\$35,530
Finishing	\$10,593	\$21,080	\$18,852	\$18,852
Forestry	\$6,259	\$7,509	\$4,114	\$4,114
Grazing	\$13,741	\$13,601	\$16,511	\$16,250
Horticulture	\$137,434	\$140,000	\$89,139	\$89,047
Special	\$46,772	\$31,817	\$13,292	\$12,277
<b>Total All Farms</b>	<b>\$21,217</b>	<b>\$20,299</b>	<b>\$23,070</b>	<b>\$23,980</b>
<b>Northland</b>				
Arable	\$19,688			
Dairy	\$18,015	\$14,315	\$17,045	\$17,460
Finishing			\$6,120	\$6,120
Forestry	\$6,140	\$2,848		
Grazing	\$6,393	\$11,627	\$6,944	\$6,451
Horticulture	\$114,644		\$295,537	\$62,015
Special		\$9,783	\$202,273	\$105,933
<b>Total All Farms</b>	<b>\$9,621</b>	<b>\$10,542</b>	<b>\$11,910</b>	<b>\$11,910</b>
<b>Auckland</b>				
Arable	\$95,539			
Dairy	\$10,274	\$22,330	\$21,881	\$21,158
Finishing		\$53,963	\$24,552	\$29,321
Forestry			\$3,077	
Grazing	\$24,188	\$22,166	\$23,056	\$23,056
Horticulture	\$415,796	\$395,416	\$171,671	\$315,969
Special			\$1,217,063	\$2,091,255
<b>Total All Farms</b>	<b>\$95,539</b>	<b>\$40,991</b>	<b>\$25,029</b>	<b>\$25,599</b>
<b>Waikato</b>				
Arable	\$12,295		\$21,569	\$33,711
Dairy	\$38,248	\$35,079	\$42,258	\$39,289
Finishing	\$5,917	\$19,928	\$40,446	\$19,756
Forestry		\$29,368		
Grazing	\$15,475	\$25,763	\$29,933	\$29,489
Horticulture				
Special	\$28,448	\$115,729		
<b>Total All Farms</b>	<b>\$24,164</b>	<b>\$31,625</b>	<b>\$37,278</b>	<b>\$36,577</b>
<b>Bay of Plenty</b>				
Arable				
Dairy	\$32,715	\$28,178	\$33,471	\$37,376
Finishing				
Forestry	\$6,085			
Grazing	\$34,996	\$15,855	\$12,500	\$12,500
Horticulture	\$171,667	\$200,276	\$88,797	\$103,664
Special	\$28,659			
<b>Total All Farms</b>	<b>\$99,768</b>	<b>\$36,665</b>	<b>\$41,772</b>	<b>\$37,376</b>
<b>Gisborne</b>				
Arable		\$115,311		
Dairy				
Finishing			\$11,669	\$11,669
Forestry		\$4,486		

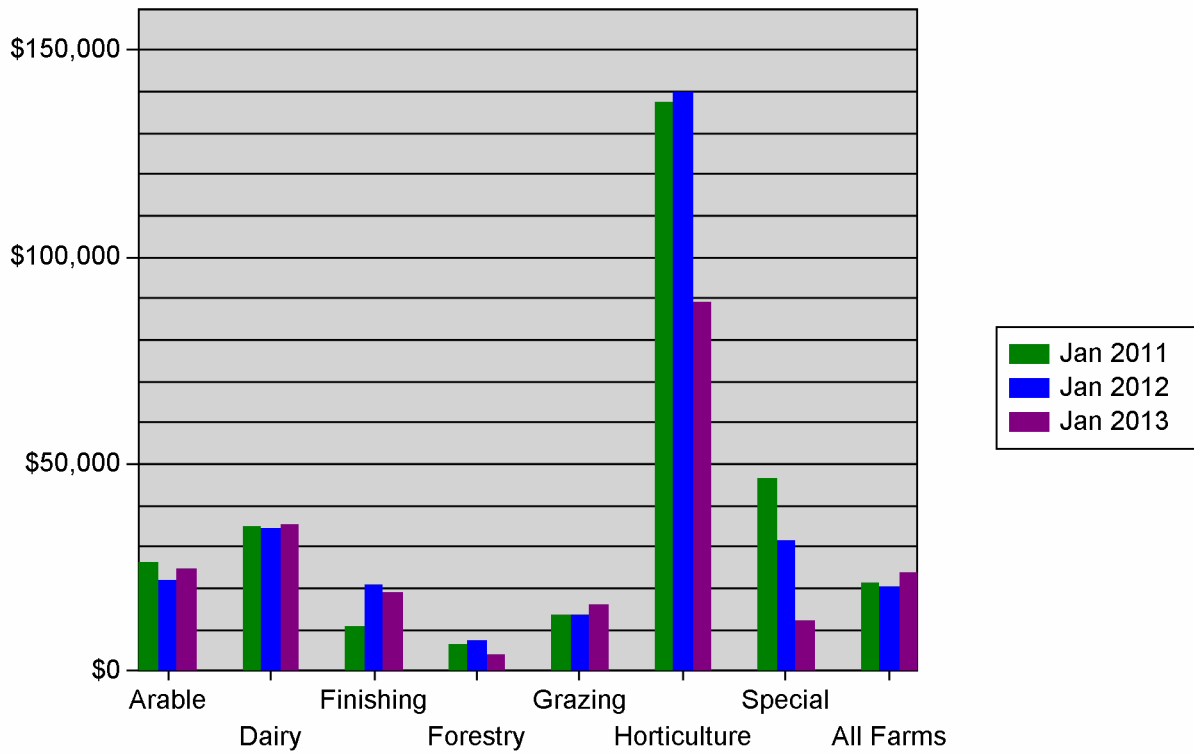
Rural Property Type		Jan 2011	Jan 2012	Dec 2012	Jan 2013
<b>Gisborne</b>	Grazing	\$14,769	\$4,236	\$3,572	\$3,572
	Horticulture	\$117,000		\$79,643	\$80,000
	Special				
	<b>Total All Farms</b>	<b>\$20,476</b>	<b>\$5,609</b>	<b>\$62,540</b>	<b>\$67,222</b>
<b>Hawkes Bay</b>	Arable		\$14,724		
	Dairy				\$31,250
	Finishing		\$25,250	\$7,848	\$8,837
	Forestry		\$5,223	\$4,114	\$8,965
	Grazing	\$8,562	\$7,698	\$7,944	\$10,393
	Horticulture	\$106,797	\$131,148	\$112,778	\$67,901
	Special			\$8,419	\$7,761
	<b>Total All Farms</b>	<b>\$8,643</b>	<b>\$10,764</b>	<b>\$8,456</b>	<b>\$12,972</b>
<b>Taranaki</b>	Arable				
	Dairy	\$40,992	\$44,231	\$39,762	\$40,387
	Finishing		\$46,725	\$5,105	\$7,211
	Forestry			\$2,279	\$2,279
	Grazing	\$20,031	\$39,908	\$10,716	\$14,539
	Horticulture	\$112,500			
	Special			\$2,124	\$2,124
	<b>Total All Farms</b>	<b>\$40,426</b>	<b>\$42,652</b>	<b>\$26,879</b>	<b>\$30,888</b>
<b>Manawatu/Wanganui</b>	Arable	\$40,387	\$25,829	\$25,106	\$37,857
	Dairy	\$24,203	\$23,232	\$27,773	\$30,216
	Finishing	\$16,500	\$17,361	\$20,270	\$20,729
	Forestry	\$6,378		\$1,299	\$1,299
	Grazing	\$4,664	\$4,613	\$11,131	\$8,972
	Horticulture	\$112,500			
	Special	\$46,772	\$34,991		
	<b>Total All Farms</b>	<b>\$16,576</b>	<b>\$12,965</b>	<b>\$18,298</b>	<b>\$19,029</b>
<b>Wellington</b>	Arable		\$4,382	\$26,504	\$19,810
	Dairy				
	Finishing	\$10,432	\$23,746	\$23,115	\$23,115
	Forestry	\$2,925			
	Grazing		\$12,202	\$4,240	\$4,240
	Horticulture			\$26,263	\$48,680
	Special	\$511,696			
	<b>Total All Farms</b>	<b>\$10,432</b>	<b>\$7,086</b>	<b>\$18,852</b>	<b>\$17,087</b>
<b>Nelson</b>	Arable	\$7,561			
	Dairy		\$16,793		
	Finishing			\$13,090	\$13,090
	Forestry			\$13,584	\$7,250
	Grazing	\$3,157	\$24,890	\$17,915	\$11,265
	Horticulture	\$127,101	\$131,849	\$149,011	\$135,218
	Special			\$3,710	\$2,427
	<b>Total All Farms</b>	<b>\$7,561</b>	<b>\$26,161</b>	<b>\$20,796</b>	<b>\$22,803</b>
<b>West Coast</b>	Arable				
	Dairy	\$26,590	\$25,077	\$21,373	\$16,912
	Finishing				

Rural Property Type	Jan 2011	Jan 2012	Dec 2012	Jan 2013
<b>West Coast</b>				
Forestry				
Grazing	\$13,533	\$12,037	\$14,824	\$13,254
Horticulture				
Special				
<b>Total All Farms</b>	<b>\$25,364</b>	<b>\$21,579</b>	<b>\$15,103</b>	<b>\$15,103</b>
<b>Canterbury</b>				
Arable	\$20,182	\$23,204	\$24,752	\$28,210
Dairy	\$37,719	\$48,596	\$47,475	\$46,878
Finishing	\$13,254	\$20,424	\$18,852	\$19,114
Forestry	\$5,664	\$41,667	\$23,321	\$34,335
Grazing	\$20,328	\$16,432	\$26,893	\$25,526
Horticulture		\$34,457		
Special	\$55,741	\$4,274	\$13,994	\$13,994
<b>Total All Farms</b>	<b>\$19,703</b>	<b>\$19,503</b>	<b>\$25,526</b>	<b>\$25,139</b>
<b>Otago</b>				
Arable		\$9,117	\$29,237	\$29,237
Dairy	\$37,577	\$31,580	\$34,483	\$34,483
Finishing	\$8,216	\$12,712	\$9,121	\$6,675
Forestry	\$9,060		\$1,268	\$1,268
Grazing	\$6,918	\$11,205	\$11,100	\$12,822
Horticulture	\$25,281	\$127,870	\$40,476	\$40,476
Special	\$323,000	\$11,446	\$34,772	\$34,772
<b>Total All Farms</b>	<b>\$10,667</b>	<b>\$12,712</b>	<b>\$13,242</b>	<b>\$12,822</b>
<b>Southland</b>				
Arable				
Dairy	\$34,423	\$38,117	\$34,107	\$33,831
Finishing	\$22,074	\$23,377	\$18,834	\$18,625
Forestry	\$931			
Grazing	\$17,384	\$12,451	\$22,522	\$17,815
Horticulture	\$21,930			
Special		\$16,021	\$24,461	\$24,461
<b>Total All Farms</b>	<b>\$23,813</b>	<b>\$21,080</b>	<b>\$21,750</b>	<b>\$20,726</b>

## Median Sales, Lifestyle - 3 year comparison

District	Jan 2011	Jan 2012	Dec 2012	Jan 2013
Northland	\$260,000	\$335,000	\$345,000	\$349,000
Auckland	\$741,000	\$702,000	\$729,000	\$728,000
Waikato	\$400,000	\$425,000	\$459,500	\$459,000
Bay of Plenty	\$485,000	\$549,000	\$475,000	\$465,000
Gisborne	\$477,500	\$312,500	\$638,500	\$578,750
Hawkes Bay	\$420,500	\$506,750	\$460,000	\$474,500
Taranaki	\$364,000	\$465,000	\$450,000	\$413,500
Manawatu/Wanganui	\$290,000	\$306,000	\$330,000	\$365,000
Wellington	\$481,000	\$380,000	\$471,000	\$531,000
Nelson	\$519,300	\$535,000	\$505,750	\$500,000
West Coast	\$210,000	\$250,000	\$295,000	\$290,000
Canterbury	\$506,000	\$490,000	\$510,000	\$536,250
Otago	\$370,000	\$422,500	\$430,000	\$410,000
Southland	\$324,000	\$350,000	\$320,000	\$315,000
New Zealand Total	\$440,000	\$470,000	\$490,000	\$498,500

Farms - Median Price Per Hectare 3-Year Trend - All New Zealand



Lifestyle - Median Sale Price 3-Year Trend

