

## Number of Sales, Farms - 3 year comparison

District	Jun 2011	Jun 2012	May 2013	Jun 2013
Northland	25	32	42	43
Auckland	19	22	49	48
Waikato	45	39	78	68
Bay of Plenty	15	25	30	25
Gisborne	13	10	8	8
Hawkes Bay	17	19	24	19
Taranaki	20	21	31	31
Manawatu/Wanganui	40	44	46	46
Wellington	5	16	15	8
Nelson	16	24	16	18
West Coast	13	8	10	11
Canterbury	57	61	62	61
Otago	48	37	50	43
Southland	60	48	51	45
New Zealand Total	393	406	512	474

## Number of Sales, Lifestyle - 3 year comparison

District	Jun 2011	Jun 2012	May 2013	Jun 2013
Northland	111	133	149	145
Auckland	267	289	448	424
Waikato	151	192	249	227
Bay of Plenty	94	121	109	113
Gisborne	9	9	19	16
Hawkes Bay	40	49	77	65
Taranaki	55	44	45	63
Manawatu/Wanganui	105	103	127	127
Wellington	76	89	93	76
Nelson	81	78	83	73
West Coast	14	19	22	19
Canterbury	228	243	294	269
Otago	88	76	76	88
Southland	67	47	53	58
New Zealand Total	1386	1492	1844	1763

## Number of Sales - Comparison of All Rural Sales by Type for New Zealand

Rural Property Type	Jun 2011	Jun 2012	May 2013	Jun 2013
Arable	16	12	19	20
Dairy	58	47	90	66
Finishing	59	82	106	92
Forestry	20	14	9	9
Grazing	209	205	235	228
Horticulture	24	31	36	42
Special	7	15	17	17
Total All Farms	393	406	512	474
Lifestyle	1386	1492	1844	1763

## Number of Sales - Farms by Type

District	Arable	Dairy	Finishing	Forestry	Grazing	Horticulture	Special	All Farms	Lifestyle
Northland	0	6	2	1	27	7	0	43	145
Auckland	1	3	9	0	25	9	1	48	424
Waikato	3	21	12	0	29	0	3	68	227
Bay of Plenty	1	5	0	1	6	12	0	25	113
Gisborne	1	0	0	0	2	4	1	8	16
Hawkes Bay	1	0	6	1	5	3	3	19	65
Taranaki	0	3	3	0	25	0	0	31	63
Manawatu/Wanganui	5	4	9	1	25	0	2	46	127
Wellington	0	1	0	4	3	0	0	8	76
Nelson	3	2	4	0	4	5	0	18	73
West Coast	0	4	1	0	6	0	0	11	19
Canterbury	3	3	15	1	37	0	2	61	269
Otago	1	4	14	0	21	2	1	43	88
Southland	1	10	17	0	13	0	4	45	58
New Zealand	20	66	92	9	228	42	17	474	1763

## Median Farm Size ha. - Comparison of All Farm Sales by Type for New Zealand

Rural Property Type	Jun 2011	Jun 2012	May 2013	Jun 2013
Arable	86	35	22	19
Dairy	116	103	124	132
Finishing	157	71	68	58
Forestry	49	181	35	87
Grazing	90	80	59	58
Horticulture	7	7	6	6
Special	57	45	37	37
Total All Farms	95	80	70	61

## Median Farm Size ha. - Farms by Type

District	Arable	Dairy	Finishing	Forestry	Grazing	Horticulture	Special	All Farms
Northland		171	70	87	53	4		53
Auckland	35	56	55		40	5	9	38
Waikato	5	127	78		55		13	74
Bay of Plenty	16	94		195	40	5		15
Gisborne	8				463	8	367	15
Hawkes Bay	8		127	66	154	15	13	72
Taranaki		72	3		44			44
Manawatu/Wanganui	91	88	165	168	76		47	88
Wellington		259		68	41			42
Nelson	4	254	31		29	10		20
West Coast		207	60		58			129
Canterbury	114	143	31	32	152		104	120
Otago	30	370	119		51	3	65	84
Southland	1	128	75		57		68	89
New Zealand	19	132	58	87	58	6	37	61

## Median Selling Price Per Hectare (3 month) - Comparison of All Rural Sales by District and Type

Rural Property Type		Jun 2011	Jun 2012	May 2013	Jun 2013
<b>New Zealand</b>	Arable	\$20,144	\$24,589	\$30,811	\$30,031
	Dairy	\$30,828	\$27,919	\$34,850	\$29,555
	Finishing	\$10,377	\$18,851	\$17,903	\$18,672
	Forestry	\$7,591	\$4,121	\$4,979	\$5,542
	Grazing	\$12,892	\$13,025	\$13,443	\$13,831
	Horticulture	\$132,401	\$130,208	\$128,248	\$120,345
	Special	\$23,684	\$12,073	\$16,600	\$28,333
	<b>Total All Farms</b>	<b>\$15,568</b>	<b>\$17,565</b>	<b>\$20,499</b>	<b>\$19,716</b>
<b>Northland</b>	Arable				
	Dairy	\$13,743	\$21,058	\$14,411	\$12,185
	Finishing	\$4,976	\$15,138	\$8,604	\$13,267
	Forestry	\$7,762			\$6,004
	Grazing	\$11,765	\$9,607	\$8,337	\$8,591
	Horticulture	\$185,708	\$68,834	\$231,360	\$135,000
	Special	\$281,818	\$19,333		
	<b>Total All Farms</b>	<b>\$11,765</b>	<b>\$16,394</b>	<b>\$12,185</b>	<b>\$10,329</b>
<b>Auckland</b>	Arable			\$68,478	\$30,488
	Dairy	\$43,731	\$23,473	\$29,643	\$34,932
	Finishing		\$51,976	\$19,965	\$18,734
	Forestry		\$1,672		
	Grazing	\$16,681	\$27,244	\$32,441	\$24,138
	Horticulture	\$241,298	\$608,424	\$181,034	\$271,203
	Special		\$12,073	\$90,444	\$90,444
	<b>Total All Farms</b>	<b>\$36,875</b>	<b>\$31,410</b>	<b>\$34,667</b>	<b>\$31,178</b>
<b>Waikato</b>	Arable	\$36,594		\$104,228	\$104,228
	Dairy	\$40,062	\$47,794	\$37,037	\$26,455
	Finishing	\$16,512	\$33,132	\$19,147	\$19,052
	Forestry				
	Grazing	\$26,592	\$20,455	\$23,512	\$22,976
	Horticulture		\$84,722		
	Special	\$63,000	\$74,855	\$83,966	\$96,311
	<b>Total All Farms</b>	<b>\$37,658</b>	<b>\$33,131</b>	<b>\$29,993</b>	<b>\$23,750</b>
<b>Bay of Plenty</b>	Arable			\$33,438	\$33,438
	Dairy	\$32,067	\$21,107	\$40,541	\$37,234
	Finishing	\$49,200	\$33,333	\$35,484	
	Forestry		\$9,195	\$13,246	\$3,159
	Grazing	\$20,077	\$19,153	\$25,881	\$22,521
	Horticulture	\$238,333	\$156,250	\$148,808	\$160,141
	Special				
	<b>Total All Farms</b>	<b>\$49,200</b>	<b>\$43,778</b>	<b>\$40,489</b>	<b>\$83,300</b>
<b>Gisborne</b>	Arable	\$36,111	\$59,393	\$64,300	\$64,300
	Dairy				
	Finishing	\$4,870	\$8,318		
	Forestry	\$4,619	\$3,130		

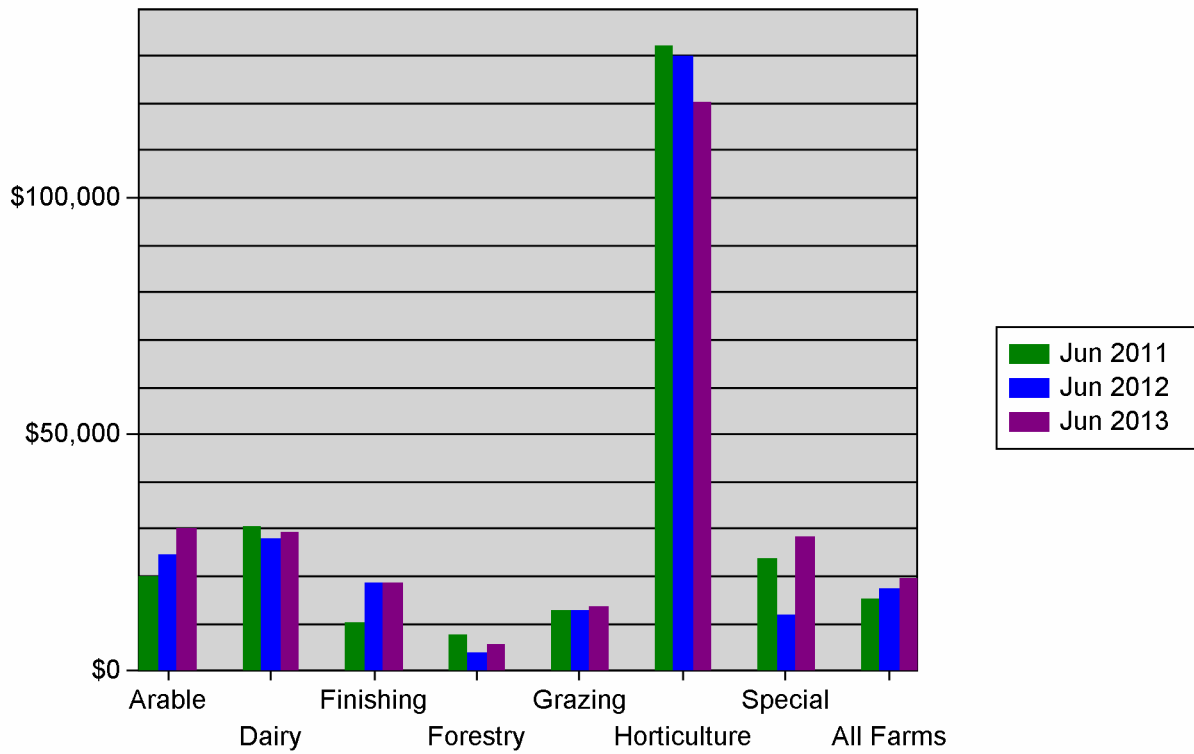
Rural Property Type		Jun 2011	Jun 2012	May 2013	Jun 2013
<b>Gisborne</b>	Grazing	\$4,792	\$3,913	\$4,501	\$4,501
	Horticulture	\$61,939	\$164,905	\$128,323	\$69,566
	Special	\$3,968		\$5,579	\$5,579
	<b>Total All Farms</b>	<b>\$4,792</b>	<b>\$10,631</b>	<b>\$59,991</b>	<b>\$59,991</b>
<b>Hawkes Bay</b>	Arable	\$21,200	\$29,081	\$14,625	\$29,575
	Dairy		\$21,800		
	Finishing	\$7,779	\$16,369	\$11,229	\$11,229
	Forestry			\$2,955	\$2,955
	Grazing	\$6,931	\$16,500	\$8,152	\$10,133
	Horticulture	\$65,789	\$62,036	\$63,333	\$63,333
	Special			\$28,538	\$52,498
	<b>Total All Farms</b>	<b>\$8,400</b>	<b>\$21,479</b>	<b>\$9,950</b>	<b>\$13,780</b>
	<b>Taranaki</b>	Arable			
Dairy		\$46,729	\$40,203	\$21,227	\$37,291
Finishing		\$7,397		\$74,684	\$62,303
Forestry		\$5,670			
Grazing		\$27,244	\$11,992	\$27,871	\$24,875
Horticulture					
Special					
<b>Total All Farms</b>		<b>\$28,947</b>	<b>\$15,036</b>	<b>\$27,871</b>	<b>\$28,402</b>
<b>Manawatu/Wanganui</b>	Arable	\$21,618	\$20,961	\$25,259	\$17,290
	Dairy	\$24,905	\$34,250	\$25,622	\$25,622
	Finishing	\$14,697	\$10,887	\$12,588	\$9,005
	Forestry	\$2,335	\$1,682	\$20,000	\$7,485
	Grazing	\$8,750	\$6,763	\$8,213	\$8,213
	Horticulture		\$281,065		
	Special		\$10,000	\$11,243	\$136,065
	<b>Total All Farms</b>	<b>\$13,442</b>	<b>\$9,806</b>	<b>\$10,655</b>	<b>\$8,700</b>
<b>Wellington</b>	Arable	\$2,752		\$17,176	
	Dairy			\$21,798	\$21,798
	Finishing	\$5,692	\$7,096	\$20,293	
	Forestry		\$11,860	\$4,867	\$5,260
	Grazing	\$11,200	\$20,790	\$14,393	\$15,342
	Horticulture				
	Special		\$3,701		
	<b>Total All Farms</b>	<b>\$5,692</b>	<b>\$14,954</b>	<b>\$15,342</b>	<b>\$8,601</b>
<b>Nelson</b>	Arable				\$75,157
	Dairy	\$14,196	\$16,514	\$23,944	\$23,944
	Finishing		\$24,177	\$30,373	\$31,887
	Forestry	\$9,007	\$2,253		
	Grazing	\$12,017	\$7,130	\$15,190	\$15,138
	Horticulture	\$36,386	\$120,116	\$79,000	\$79,000
	Special		\$72,785		
	<b>Total All Farms</b>	<b>\$9,964</b>	<b>\$13,240</b>	<b>\$26,562</b>	<b>\$31,887</b>
<b>West Coast</b>	Arable				
	Dairy	\$17,660	\$19,626	\$20,530	\$17,266
	Finishing	\$5,399	\$4,855	\$22,500	\$22,500

Rural Property Type		Jun 2011	Jun 2012	May 2013	Jun 2013
<b>West Coast</b>	Forestry	\$1,694			
	Grazing	\$16,183	\$13,636	\$10,831	\$7,250
	Horticulture				
	Special				
	<b>Total All Farms</b>	<b>\$16,183</b>	<b>\$14,910</b>	<b>\$11,792</b>	<b>\$11,225</b>
<b>Canterbury</b>	Arable	\$18,670	\$24,179	\$29,500	\$25,000
	Dairy	\$38,736	\$50,012	\$45,283	\$42,750
	Finishing	\$16,552	\$27,475	\$32,485	\$41,463
	Forestry	\$14,940	\$7,349	\$7,813	\$7,813
	Grazing	\$13,821	\$13,094	\$12,019	\$13,823
	Horticulture	\$36,489			
	Special		\$11,277	\$16,950	\$124,178
	<b>Total All Farms</b>	<b>\$15,434</b>	<b>\$19,326</b>	<b>\$25,017</b>	<b>\$21,277</b>
<b>Otago</b>	Arable	\$9,245	\$12,189		\$17,195
	Dairy	\$28,884	\$29,362	\$37,482	\$37,482
	Finishing	\$4,844	\$12,532	\$13,610	\$13,351
	Forestry		\$4,821		
	Grazing	\$6,634	\$8,265	\$10,284	\$11,818
	Horticulture	\$68,498	\$259,709	\$108,333	\$177,273
	Special	\$8,190		\$14,202	\$14,202
	<b>Total All Farms</b>	<b>\$6,778</b>	<b>\$10,000</b>	<b>\$13,301</b>	<b>\$13,321</b>
<b>Southland</b>	Arable		\$18,993	\$3,000	\$3,000
	Dairy	\$31,460	\$20,474	\$37,758	\$34,643
	Finishing	\$24,677	\$23,028	\$17,197	\$17,425
	Forestry				
	Grazing	\$14,472	\$14,423	\$15,547	\$18,966
	Horticulture				
	Special	\$23,684	\$10,874	\$13,826	\$13,826
	<b>Total All Farms</b>	<b>\$21,619</b>	<b>\$18,972</b>	<b>\$17,425</b>	<b>\$20,517</b>

## Median Sales, Lifestyle - 3 year comparison

District	Jun 2011	Jun 2012	May 2013	Jun 2013
Northland	\$320,000	\$310,000	\$320,000	\$342,500
Auckland	\$720,000	\$720,000	\$802,500	\$793,750
Waikato	\$415,000	\$448,500	\$465,000	\$497,000
Bay of Plenty	\$489,500	\$490,000	\$480,000	\$500,001
Gisborne	\$387,000	\$300,000	\$465,000	\$462,500
Hawkes Bay	\$587,500	\$430,000	\$410,000	\$410,000
Taranaki	\$350,000	\$445,000	\$380,000	\$371,000
Manawatu/Wanganui	\$327,000	\$340,000	\$275,000	\$300,000
Wellington	\$397,500	\$487,500	\$460,000	\$425,000
Nelson	\$545,000	\$528,500	\$565,000	\$515,000
West Coast	\$248,750	\$237,000	\$192,500	\$240,000
Canterbury	\$449,500	\$550,000	\$540,000	\$540,000
Otago	\$460,750	\$346,250	\$511,500	\$455,000
Southland	\$350,000	\$330,000	\$375,000	\$340,000
New Zealand Total	\$460,000	\$477,500	\$509,500	\$505,000

Farms - Median Price Per Hectare 3-Year Trend - All New Zealand



Lifestyle - Median Sale Price 3-Year Trend

