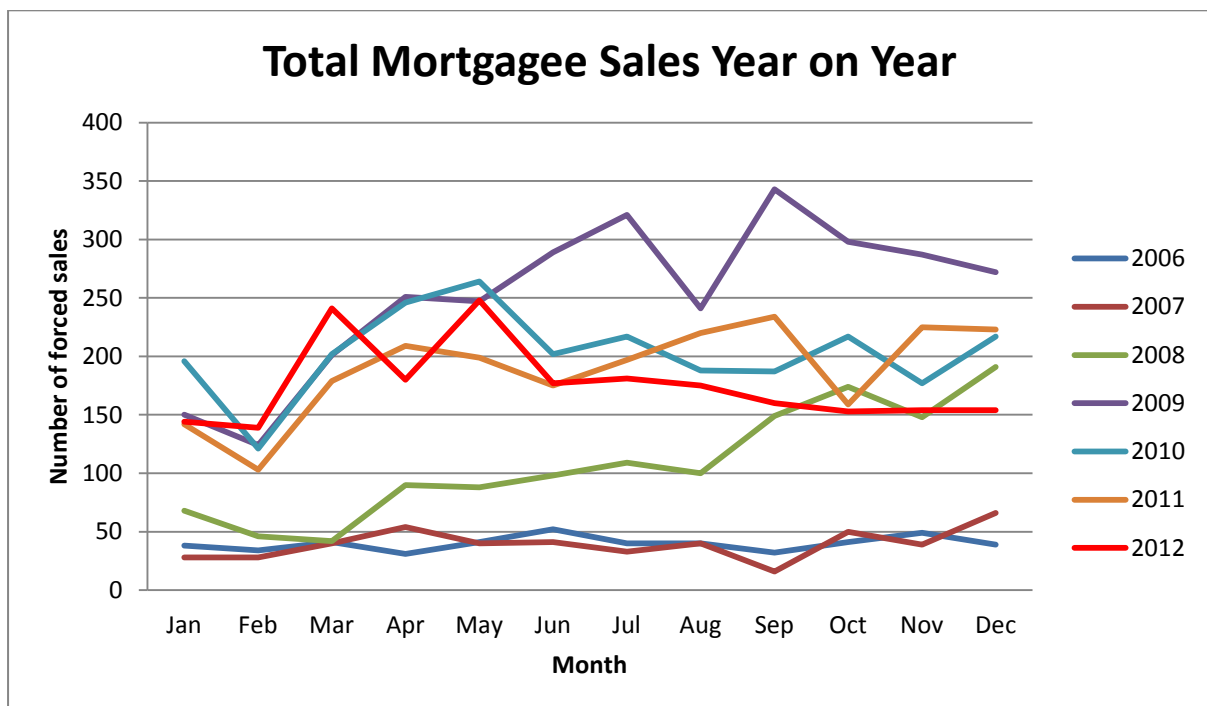
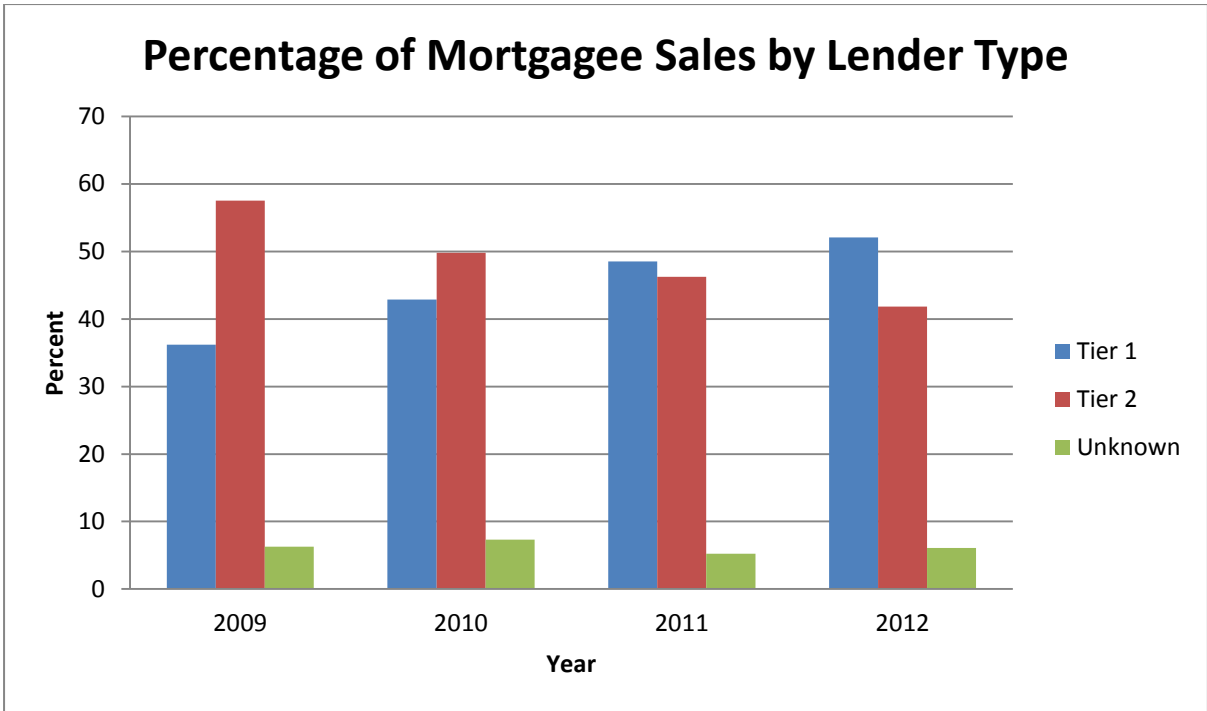


Fourth Quarter (2012) Mortgagee Sales

Total National Mortgagee Sales by Month 2006 to 2012

MONTH	YEAR						
	2006	2007	2008	2009	2010	2011	2012
1	38	28	68	150	196	142	144
2	34	28	46	124	121	103	139
3	41	40	42	201	202	179	241
4	31	54	90	251	246	208	180
5	41	40	88	247	264	199	248
6	52	41	98	289	202	175	177
7	40	33	109	321	217	198	181
8	40	40	100	241	188	220	175
9	32	16	149	343	187	234	160
10	41	50	174	298	217	159	153
11	49	39	148	287	177	225	154
12	39	66	191	272	217	223	154
Grand Total	478	475	1303	3024	2434	2265	2106





Percentage of Mortgagee Sales by Lender Type

	2009	2010	2011	2012
Tier 1	36.2	42.9	48.5	52.1
Tier 2	57.5	49.8	46.2	41.8
Unknown	6.3	7.3	5.2	6.1

